

Winona Fire Department

2021 Annual Report





Winona Fire Department

Serving Since November 1, 1889

Headquarters – 451 East 3rd Street

Winona, MN 55987-3912

Phone: 507-457-8266

Fax: 507-452-0345

<https://www.cityofwinona.com/201/Fire-Department>



Mayor, City Council, City Manager,

RE: Winona Fire Department 2021 Annual Report

On behalf of the members of the Winona Fire Department, I proudly present the Winona Fire Department annual report as a reflection of the dedication, professionalism and commitment to the departments vision of reducing and mitigating fire, rescue and medical events in the community we serve.

The Winona Fire Department responded to 2372 calls for help in 2021. Rescue and emergency medical calls account for 69% (1648) of our overall call volume. With an aging population, projections point to continued increase in emergency medical response. With current staffing and paramedic licensure the department will continue to provide advanced life support (ALS) engine response from both fire stations.

The Winona Fire Department responded to 724 (31%) fire related calls in 2021. The department extinguished 60 fires of various types during the year; all but 15 (general pages) were handled by on-duty staff.

To help establish appropriate fire insurance premiums for residential and commercial properties. Insurance Service Organizations (ISO) provides that information through the Public Protection Classification (PPC) program. The City of Winona continues to hold a PPC rating of 2. Only a few cities in the state of Minnesota enjoy this prestigious classification. This classification is a direct reflection of continued council support for public safety and essential service provided to the citizens of Winona.

The year of COVID-19.....Again!

A core mission of the Winona Fire Department is the protection of lives and property of the inhabitants of the City of Winona. The Fire Department has worked diligently in efforts to keep businesses open and its employees safe from COVID-19. Winona Fire Department Paramedics continue to assist in our public health's goal of vaccinating all City and County residents.

This report contains detailed information and statistics of the department. You are encouraged to contact this office for any further explanation or to tour our facility.

Respectfully Submitted,

Curt Bittle, Fire Chief

Code of Ethics

The Winona Fire Department is dedicated to the protection and preservation of life and property against fire, emergency medical conditions and other emergencies coming under its jurisdiction. Towards this endeavor, members of the department strive to live according to ethical principles consistent with professional conduct and shall;

Maintain the highest standards of personal integrity, be honest and straightforward in dealing with others and avoid conflicts of interest.

Place the public's safety and the safety of firefighters above all concerns; be supportive of training and education which promote safe living and working conditions.

Be mindful of the needs of others and assist them freely in developing their skills, abilities, and talents to the fullest extent; offer encouragement to those trying to better themselves, the Department and the Fire Service.

Be Supportive of the Minnesota State Fire Code, and the fire protection needs of the City of Winona.

Foster creativity and be open to consider innovations that may better enable the performance of the duties and responsibilities of the Winona Fire Department.

Mission Statement

The primary mission of the Winona Fire Department is to provide a range of programs designed to protect the lives and property of the inhabitants of the City of Winona from the adverse effects of fires, sudden medical emergencies, or exposure to dangerous conditions created by either man or nature.

The department will continue to provide for the expanding needs of the community beyond the extinguishment of fires.

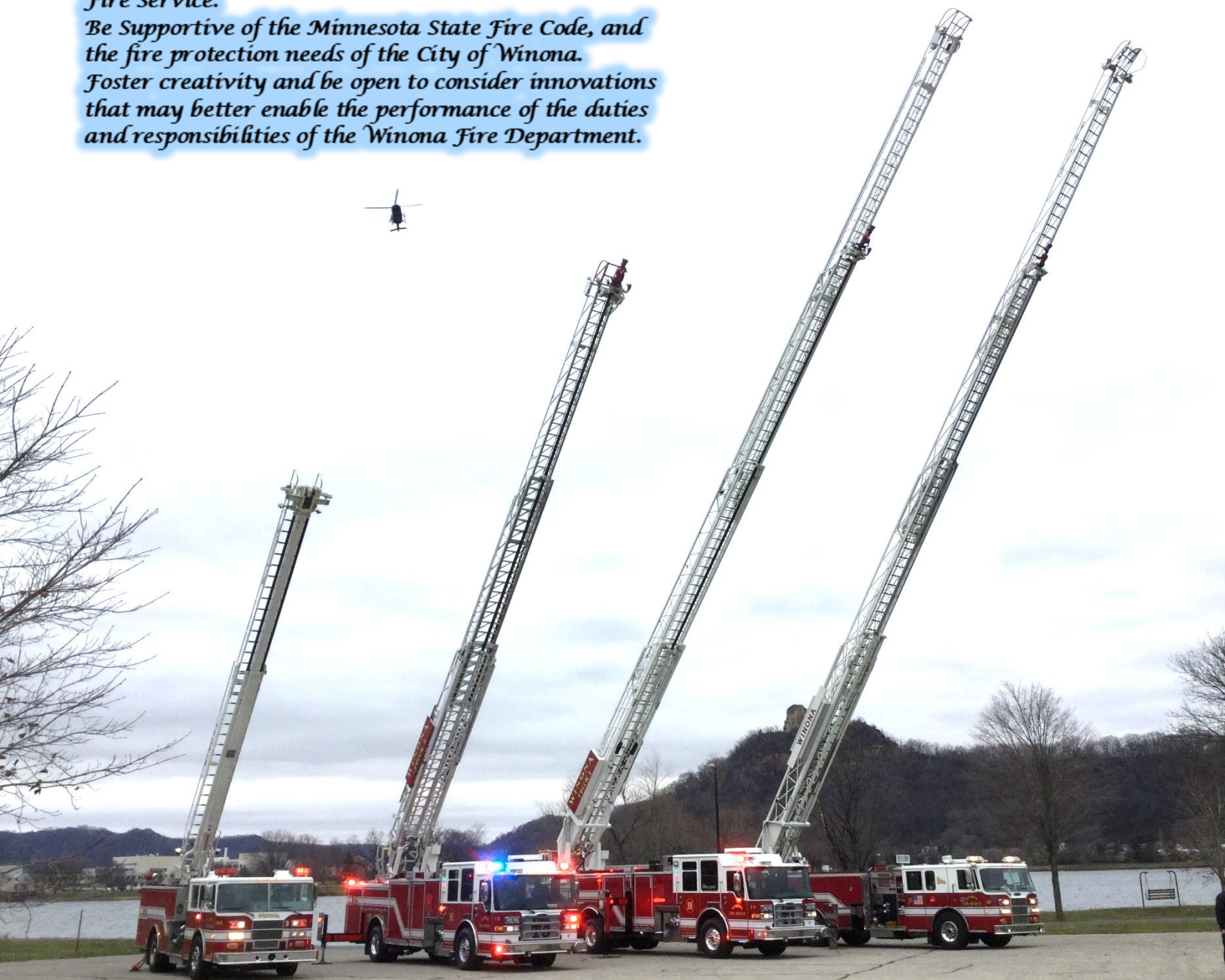


Table of Contents

<u>Page</u>	<u>Section</u>
1.....	Jurisdiction Protected
1.....	City of Winona Representatives
2.....	Organizational Statement
3.....	Organizational Flow Chart
4.....	Full Time Roster
5.....	Training
6.....	Part Time Program
7.....	Functions at the Workplace
7.....	Performance of Duties
7.....	Emergency Response
8.....	Emergency Medical Services
8.....	Annual Testing of Fire Hose
9.....	2021 Statistics
9.....	Overlapping Calls
9.....	Pages
10.....	Emergency Record
11.....	Injuries
11.....	Mutual Aid
11.....	Response Time
11.....	Comparable Fire Loss
12.....	Bureau of Fire Prevention
12.....	Building Inspections
12.....	Permits, Licenses & Certificates
12.....	Fire Investigations
13.....	Prevention through Education
13.....	Public Education
14.....	2021 News
15.....	Daily Activities



Jurisdiction Protected

The Winona Fire Department protects: 24 sq. miles in the city
26,807 people in the city

Within the Winona city limits there is one airport, ten assisted living / nursing homes, one hospital, two universities with associated off campus student dwelling units and one technical college. The Winona Fire Department protects 18.84 sq. miles of land area and 5.29 sq. miles of water area. Winona Fire Department also has mutual aid contracts with other departments in the surrounding area.



City of Winona

Mayor: Scott D. Sherman

City Manager: Chad Ubl

Steve Young	1 st Ward
Eileen Moeller	2 nd Ward
Pamela Eyden	3 rd Ward
George Borzyskowski	4 th Ward
Michelle Alexander	At Large
Aaron Repinski	At Large

Winona Fire Department
Organizational Statement

Per OSHA 1910.156 and NFPA 1500 Chapter 2 (1992 Edition)

Curt Bittle

Fire Chief

January 1, 2022

Date

Organizational Chart

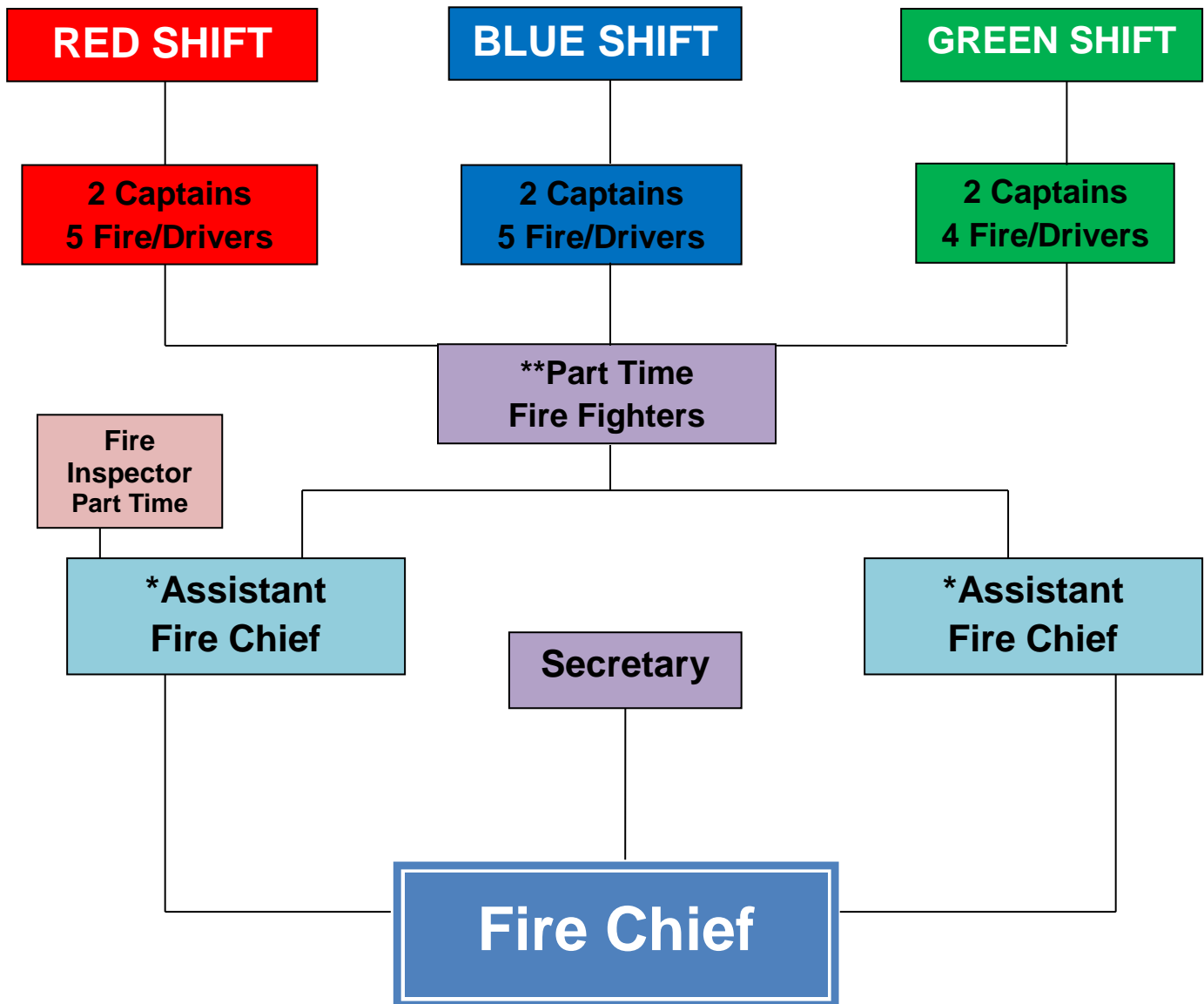
The organizational chart of the Winona Fire Department, as of January 1, 2021, is attached to this statement. As of that date, the department is authorized:

- 1 Fire Chief
- 2 Assistant Chiefs
- 6 Captains
- 14 Firefighter / Drivers
- 13 Active Part-time Firefighters

The Fire Chief and Two Assistant Chiefs work a 40-hour work week. One Assistant Chief is in charge of fire prevention and public education; and the other Assistant Chief is in charge of training and the part time program. Both Assistant Chiefs are of equal rank and answer directly to the Fire Chief. The 6 Captains and 14 career Firefighter/Drivers are normally assigned to 24-hour shifts averaging 56 hours per week. The 20 career personnel that are assigned to 24-hour shifts are divided into three shifts Red, Blue and Green. Each shift has two officers (Captains) assigned to it plus 4 or 5 Firefighter/Drivers. The Captain at the Central Station is the "Company Officer". The part time firefighters are paid on call.



Winona Fire Department



* One Assistant Fire Chief is primarily responsible for Fire Prevention, Public Education, Investigations, etc.

* One Assistant Chief is primarily responsible for training, part time program, hazardous materials, etc.

** There are a minimum of 15 and a maximum of 30 part time firefighters authorized by City Council. The numbers will vary.

2021 Full Time Roster

40 Hour Per Week Personnel		Anniversary Date
Fire Chief, Curt Bittle		8-18-92
Assistant Fire Chief, Jason Theusch		10-14-99
Assistant Fire Chief, Joel Corcoran		4-19-02
Captains		
Shawn Kohner		4-13-02
Brandon Luehmann		11-5-05
Matt Lisowski		12-23-05
Kirk Skogebo		3-26-09
Matt Yackel		12-15-10
Brandon Czaplewski		1-2-07
Firefighter / Drivers / Paramedics		
Mark Allred		12-24-04
Nathan Speltz		6-21-11
Shaun Bartelson		7-21-11
Derick Ritter		9-25-11
Pete Brueggen		4-27-13
Mike Allred		5-11-14
Tom Connell		5-21-16
Brad Bartelson		5-6-17
Tim Carlson		1-1-18
Matt Brown		1-3-17
Firefighter / Driver		
Mark Vieth		5-23-07
Charles Mayer		4-13-14
Ryan Geiger		7-14-15
Bailey Jensen		1-3-19
Secretary		
Crystal Srock	(20 Hours/Week)	8-13-12

Training

Assistant Chief Joel Corcoran is the assistant chief in charge of training. Assistant Chief Joel Corcoran plans, schedules and monitors all training whether it is in house training or outside training at other facilities. Fire Department training is divided into several general areas including: firefighting, emergency medical services, hazardous material, and rescue. It is recognized that much of the training overlaps; however, these are general guidelines for record keeping purposes. Assistant Chief Joel Corcoran also maintains the training records of all the Winona Fire Department Personnel by keeping all the records and certificates in their own personal binders. These binders are available for inspection by any regulatory agency or the individual.



Prior to becoming a career firefighter, an individual must successfully complete Basic Firefighting training and be a certified Firefighter I by the State Fire Service Certification Board, and be Certified as an Emergency Medical Technician by EMS Regulatory Board.

Assistant Chief Joel Corcoran is also in charge of the part time firefighters. Part time personnel usually train on the first three Wednesday nights of each month for a total of three hours each night. They are also given opportunities to attend training outside of the department. In addition to regular training, part time personnel are encouraged to participate in the “ride along” program. To participate in the ride along program the part time employee must have prior approval of the Assistant Chief In charge of training. Other requirements are Successful completion of Basic Firefighter Training Program (to be allowed to combat and extinguish fires) and certified as a “First Responder” or “Emergency Medical Technician” (to be allowed to assist with emergency medical calls). A part time ride along can be conducted between the hours of 0800 and 2200. This is an opportunity for the part time fire fighters to become familiar with the apparatus and daily operations at the stations and to gain experience.



Part Time Program

The part time program was started in June of 1992. Part time firefighters go through the same hiring process as the full-time city employees, including a written test, agility test and interview. They are paid an hourly rate based upon their level of certification.

Below is a listing of the various certification levels of part time personnel.



Last Name	First Name	Step	Certification Level	EMS / Paramedic	Haz/Mat
Auman	Mitchel	D	II	EMT	OPER
Brand	Reo	D	II	EMT	OPER
Cottrell	Daniel	D	II	EMR	OPER
Douglas	Paul	D	II	EMR	TECH
Harris	Jeffery	D	II	EMT	OPER
Kramer	Matthew	D	II	EMT	OPER
Merchlewitz	Rodney	D	II	EMR	TECH
Meyer	Andrew	D	II	EMT	OPER
Multhaup	Trevor	D	II	EMT	OPER
Passehl	Craig	D	II	EMT	TECH
Romine	Wesley	D	II	EMT	OPER
Van Brunt	Bill	D	II	EMT	OPER
Varner	Tyrell	D	II	EMT	OPER



Functions at the Workplace

Career and part time personnel maintain fire department facilities, apparatus, vehicles, and equipment. Major repairs beyond the expertise and time constraints of personnel, are performed at the City of Winona Central Garage, or contracted out.

Performance of Duties

All personnel are expected to perform the arduous tasks of an interior structural firefighter. Additionally, members are expected to perform emergency medical services, rescue operations and certain corrective actions at hazardous material incidents.

It is the intention of the Winona Fire Department to ensure that its members are properly trained and equipped to perform the tasks expected of them, to provide for their safety and to be in compliance with all regulatory agencies. No member of the department is ever expected to perform duties beyond the scope and intention of their training, personal protective equipment and emergency response equipment.



Emergency Response

Currently the Winona Fire Department maintains 5 Personnel on duty, 24 hours per day, every day of the year. The 5 personnel are divided between the two stations and come together for training, apparatus maintenance and certain social events.

Shift Captains are authorized to “page” off duty and part time personnel whenever the need is recognized and shall page all personnel for all confirmed structure fires.



Emergency Medical Services Captain Matt Yackel

Advanced Life Support Procedures (ALS) in 2021



King Airway	2
CPAP	0
Defibrillations	12
EKG Monitoring	82
IV / IO Therapy	44
Albuterol	10
Epinephrine	39
Nitroglycerin	2
Aspirin	9
Dextrose 50%	0
Oral Glucose	0
Naloxone	9

Annual Service Testing of Fire Hose Captain Matt Lisowski

CL	Cross Lay—Precon
HR	Hi Rise Pack
HB	Hose Bed
MU	Make Up Line
B	Blitz Line—Precon

Hose Summary 2021	1 ½ "	1 ¾ "	2 ½ "	3"	5"
Engine 1		400' PC	800' HB		600' HB
		200' HR	400' PC		50' MU
Engine 2		400' PC	800' HB		600' HB
		200' HR	400' PC		50' MU
Truck 3		400' PC	800' HB		550' HB
		100' HR	200' PC		50' MU
Engine 4		400' PC	800' HB		600' HB
		200' HR	400' PC		50' MU
Truck 1		400' PC	800' HB		600' HB
		200' HR	200' PC		50' MU
Tanker 1	600' HB		500' HB	50'	
Boat	50'				
Hose Tower or Storage	450'	1,300'	500'	600'	250'
Bought New		200'			300'
Retired		200'	100'		400'

All Winona Fire Department fire hose on apparatus or in storage is inspected and pressure tested annually. The purpose of the service test is to insure the safety and reliability of the fire hose when it is used at each incident.



2021 Statistics

According to the National Fire Protection Agency (NFPA), a Structural Fire is defined as follows: “any fire that requires the use of a 1 ½ inches or larger fire attack hose line and that also requires the use of self-contained breathing apparatus for members entering the hazardous area”.

Recent history of this type of fire is:

2011	2012	2013	2014	2015	2016	2017	2018	2019	2020	2021
16	8	16	20	22	13	7	11	14	10	21

Overlapping Calls

2011	165
2012	171
2013	179
2014	178
2015	204
2016	167
2017	188
2018	220
2019	232
2020	208
2021	219

When we receive calls for assistance prior to clearing the scene of a previous call, it is defined as an overlapping call. It would be extremely difficult to respond to this type of call in a timely manner with less than the mandated 5-person crew. The record for this type of call is shown in the chart.



Pages

Fire Officers are authorized to page off-duty personnel and part time personnel whenever the need arises. They are to page for assistance at all confirmed structure fires.

There were 20 General Pages in 2021

2011	2012	2013	2014	2015	2016	2017	2018	2019	2020	2021
21	15	16	20	25	17	14	10	17	12	20

Average number of personnel responding to *General Pages*. These numbers do not include the minimum staff level of five (5) or the chief officers.

General Pages (all shifts)

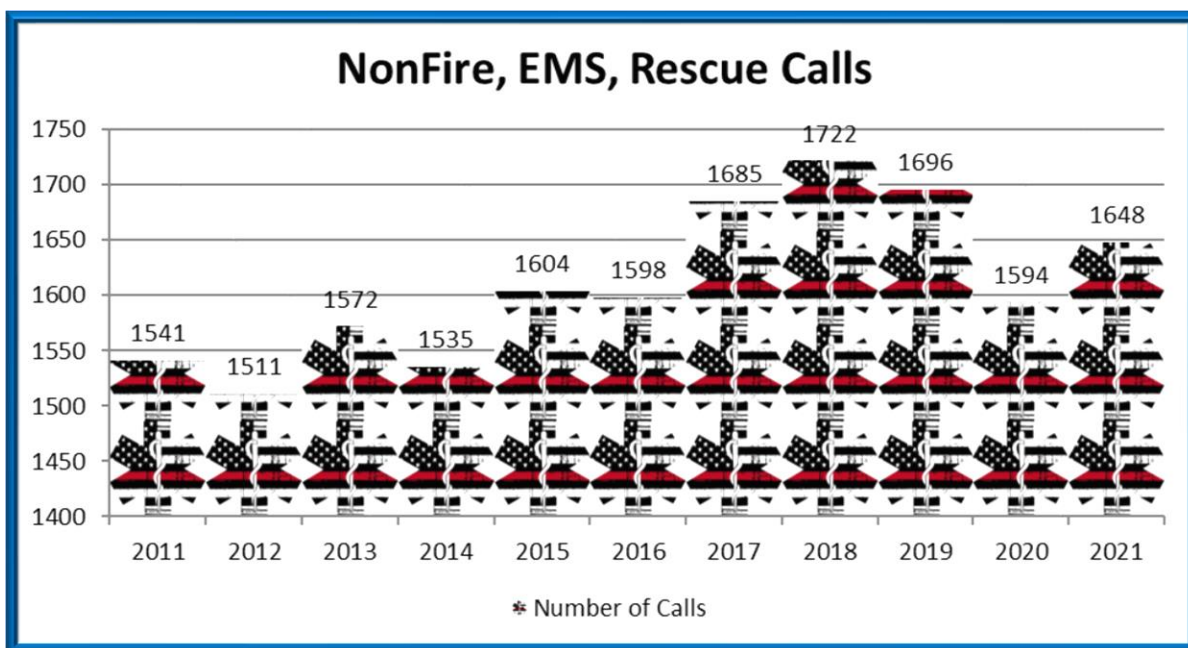
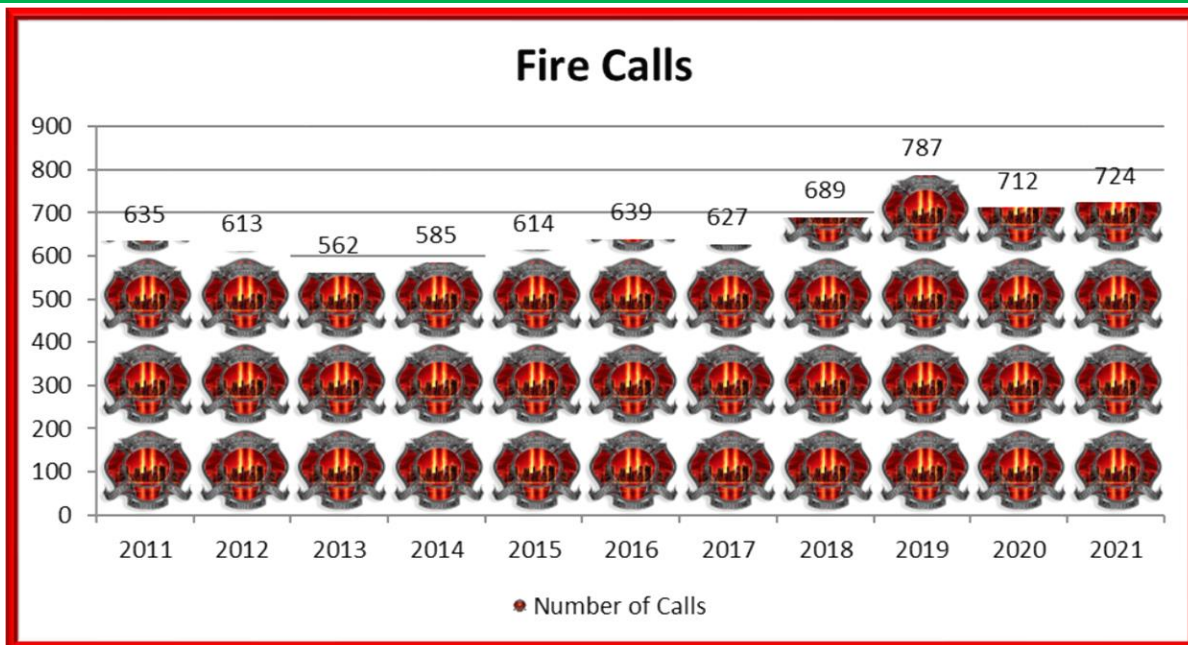
Within	5 Minutes	1.6 Personnel
Within	10 Minutes	5.1 Personnel
Within	15 Minutes	2.7 Personnel
Within	20 Minutes	2.4 Personnel

Accumulative totals of off duty personnel responding to a *General Page*

Within	5 Minutes	1.6 Personnel
Within	10 Minutes	6.7 Personnel
Within	15 Minutes	9.4 Personnel
Within	20 Minutes	11.8 Personnel

Emergency Record

Year	2011	2012	2013	2014	2015	2016	2017	2018	2019	2020	2021
Fire/Fire Related	635	613	562	585	614	639	627	689	787	712	724
EMS Rescue	1541	1511	1572	1535	1604	1598	1685	1722	1696	1594	1648
Total	2176	2124	2134	2120	2218	2237	2312	2411	2483	2306	2372



Injuries

There has been no recorded fire death in the City of Winona in the past year.

Recorded Injuries	Year	2011	2012	2013	2014	2015	2016	2017	2018	2019	2020	2021
Civilians		5	1	0	1	1	1	3	1	0	1	0
Firefighters		9	6	11	3	3	3	1	0	8	4	1
Total		14	7	11	4	4	4	4	1	8	5	0

Mutual Aid

The Winona Fire Department received mutual aid 3 times in 2021.

Winona Fire Department gave mutual aid 4 times to surrounding communities throughout the year.

Response Time

Winona Fire Department measures response time from the time we get the call until the first unit is on scene. The Winona Fire Department average emergency response time for the year 2021 was 3:56

Comparable Fire Loss

Year	Fire Alarm Calls	Fire Loss \$ Amount
2011	635	\$2,000,585
2012	613	\$1,028,301
2013	562	\$2,068,439
2014	585	\$1,760,381
2015	614	\$1,466,714
2016	639	\$673,000
2017	627	\$675,900
2018	689	\$376,250
2019	787	\$643,000
2020	712	\$393,625
2021	724	\$694,531



Bureau of Fire Prevention



Assistant Chief Jason Theusch is in charge of fire prevention programs, plan reviews and facility maintenance. Assistant Chief Jason Theusch works with building officials, architects, and designers to ensure that new construction meets the State Fire Code. Additionally, Assistant Chief Jason Theusch reviews all plans for fire protection systems to help ensure compliance with current codes.

Building Inspections

An important part of fire prevention is that of conducting fire inspections. The Winona Fire Department has been updating the way these inspections are tracked and filed for future needs. The Winona Fire Department conducted a total of 243 inspections this year. In both existing properties and new construction, there were 33 plans reviewed for construction projects, automatic suppression systems and fire alarm systems.



Permits, Licenses & Certificates

Last year, the bureau issued a total of 143 permits, licenses and certificates, for the purpose of flammable liquid installations, extinguishing system installations, maintenance of portable extinguishers and extinguishing system and burn authorizations.



Fire Investigations

A total of 21 formal cause and origin fire investigations were conducted by the bureau, with 19 being determined accidental.

Prevention Through Education

While basing our program on the importance of public relations, our primary objectives continue to emphasize the prevention of fire, public education and the investigation of fire. It is through these objectives that enhanced attitudes and safer properties can be produced, with the occurrence and severity of fires being greatly reduced.

Public Education

Fire education continues to be an important part of the Fire Prevention program. Last year our program looked a little different. Due to COVID-19 most of our programs had to be postponed. Members of the Winona Fire Department made a guided station tour video and posted it on the Internet; at the time of this writing, the video has more than 2964 views. The fifth grade Junior Fire Inspector program included approximately 300 students and was also conducted online. This program is conducted by firefighters with direction provided by Firefighter/Driver Mark Vieth. Success of the program has been realized by safely evacuating from fire, and increased effective public use of fire extinguishers.



2021 News:

Swearing-In Ceremony for Captain Czaplewski, Matthew Brown and Ryan Geiger was held on June 4th after they were promoted and completed a year of probation.



On June 8, 2021 Kyle Brown and Brad Piper witnessed a male collapse and go into cardiac arrest. They started CPR and called 911 for help. Their quick, lifesaving actions are why this patient survived.

On August 21, 2021 these young men were awarded and recognized by the Winona Fire Department and [Winona Area Ambulance Service](#) for their actions that day. Knowing CPR saves lives! Congratulations gentlemen and thank you!



Daily Activities

JANUARY 2021						
Sunday	Monday	Tuesday	Wednesday	Thursday	Friday	Saturday
27	28	29	30	31	1	2
					7-Runs	7-Runs Aerial checks Station Maintenance
3	4	5	6	7	8	9
4-Runs Station Maintenance Generator Checks- Live	2-Runs Monthly/Weekly Checks	4-Runs 0930- Auto Extrication 1300- High Angle Rescue 1300- Search and Rescue 1400- Driver's Training Generator-West-Live	10-Runs 0930- Driver's Training 1315- Paramedic Training **1800- Drivers Training Zoom	9-Runs 0930- Confined Space Rescue 1300- Hazmat	8-Runs New Year's Day 0930- Driver's Training 1300- Familiarization Inspection	10-Runs SRU/Trailer checks Station Maintenance 1200- Drivers Training
10	11	12	13	14	15	16
11-Runs Station Maintenance Generator Checks	10-Runs Weekly/SCBA Checks 1030- SCBA 1300- Paramedic Training 1300- SCBA Drill	5-Runs 0930- Search and Rescue 1300- Pump Operations Generator-West	6-Runs 0930- Safety 0930- Paramedic Training 1300- Firefighter Survival 1800- FF Survival and Safety	8-Runs 0930- High Angle Rescue 2000- Fire Inspections	5-Runs 0930- Fire Inspections 1300- Fire Inspections 2000- Fire Inspections	4-Runs Aerial checks Station Maintenance
17	18	19	20	21	22	23
7-Runs Station Maintenance Generator Checks	5-Runs Weekly/Monitor Checks 1430- Drivers Training MLK Day	12-Runs 0930- Paramedic Training 1100- Streets and Locations 1300- Paramedic Training 1300- Pump Operations Generator-West	5-Runs 0930- Paramedic Training 0930- SCBA 1030- RIT Training 1300- Paramedic Training ***1800- Hand and Power Tools	7-Runs 0930- Structural Collapse 1200- Paramedic Training 1300- Structural Collapse	4-Runs 0930- Streets and Locations 0930- Paramedic Training 1300- CPR Refresher	7-Runs Backup apparatus checks Station Maintenance
24	25	26	27	28	29	30
6-Runs Station Maintenance Generator Checks	4-Runs Weekly/Extinguisher Checks Eye Wash Stations Check tires on other equipment (trailers, fans, insulvac, wagon) 1300- COVID Vaccine Dose 2	2-Runs 0930- Pump Operations 1400- Streets and Locations 1300- COVID Vaccine Dose 2 Generator-West	6-Runs 0930- Paramedic Training 1400- Paramedic Training 1300- COVID Vaccine Dose 2	6-Runs 0800-Probationary Driver test 0930- Paramedic Training 1300- Paramedic Training	5-Runs 0930- Paramedic Training 0930- Streets and Locations 1030- Drivers Training 1300- Hose 1300- Paramedic Training	6-Runs Aerial checks Station Maintenance 1900- Streets and Locations
31						
3-Runs Station Maintenance Generator Checks	December 2020 S M T W T F S 1 2 3 4 5 6 7 8 9 10 11 12 13 14 15 16 17 18 19 20 21 22 23 24 25 26 27 28 29 30 31		February 2021 S M T W T F S 1 2 3 4 5 6 7 8 9 10 11 12 13 14 15 16 17 18 19 20 21 22 23 24 25 26 27 28			

FEBRUARY 2021

Sunday	Monday	Tuesday	Wednesday	Thursday	Friday	Saturday
31	1 4-Runs Monthly/Weekly Checks 1300- Hand Tools 1330- High Angle Rescue 1430- Ropes and Knots	2 6-Runs 0930- Fitness and Wellness 1100- Probationary Driver Test 1400- Tactical Medic Generator-West-Live	3 6-Runs 0930- Fitness and Wellness 1030- Auto Extrication 1100- Highrise Operations 1300- Foam 1300- Structural Collapse 1800- OSHA Required training	4 6-Runs 0930- High Angle Rescue 1300- Search and Rescue	5 6-Runs 0930- Paramedic Training 1030- High Angle Rescue 1300- Auto Extrication	6 8-Runs SRU/Trailer checks Station Maintenance
7 7-Runs Station Maintenance Generator Checks- Live	8 8-Runs Weekly/SCBA Checks 1300- Paramedic training	9 8-Runs 1030- Fitness and Wellness 1315- Drivers Training 1400- Paramedic Training Generator-West	10 8-Runs 0930- SCBA drill 1300- Paramedic Training ***1800- SCBA and RIT drill	11 7-Runs 0930- App Compant Familiarization 1300- Size Up 1300- Driver Training 1300- Paramedic Training	12 2-Runs 0930-Paramedic Training 1300- Paramedic Training	13 10-Runs Aerial checks Station Maintenance
14 5-Runs Station Maintenance Generator Checks	15 2-Runs Weekly/Monitor Checks Presidents Day	16 5-Runs 0930- Drivers Training 1930- Paramedic Training 1300- Drivers Training Generator-West	17 6-Runs 0930- Streets and Locations 0930- SCBA 1300- Paramedic Training ***1800-SCBA Drill	18 6-Runs 0930- Drivers Training 0930- Paramedic Training 1300- Drivers Training 1300- Paramedic Training	19 3-Runs 0930- Paramedic Training 0930- Officers Training 1300- Drivers Training	20 5-Runs Backup apparatus checks Station Maintenance 945- App Compant Familiarization
21 5-Runs Station Maintenance Generator Checks	22 5-Runs Weekly/Extinguisher Checks Eye Wash Stations Check tires on other equipment (trailers, fans, insulvac, wagon) 1300- Paramedic Training 1315- Structural Collapse	23 7-Runs 0930- Paramedic Training 1000- Hydraulics 1300- Pump Operations Generator-West	24 5-Runs 0930- Streets and Locations 0930- Air Filter Change 1100- Mass Casualty Incidents 1330- Paramedic Refresher	25 2-Runs 0930- Aerial Operations 1300- Paramedic Training	26 8-Runs 0930-Paramedic Training 1300- Pump Operations	27 5-Runs Aerial checks Station Maintenance
28 6-Runs Station Maintenance Generator Checks	1	2	3	4	5	6
7	8	January 2021 S M T W T F S 1 2 3 4 5 6 7 8 9 10 11 12 13 14 15 16 17 18 19 20 21 22 23 24 25 26 27 28 29 30 31		March 2021 S M T W T F S 1 2 3 4 5 6 7 8 9 10 11 12 13 14 15 16 17 18 19 20 21 22 23 24 25 26 27 28 29 30 31		

MARCH 2021

Sunday	Monday	Tuesday	Wednesday	Thursday	Friday	Saturday
28	1 5-Runs Monthly/Weekly Checks	2 10-Runs 0930-Paramedic Training 1300- Streets and Locations 1400- Tactical Medic Generator-West-Live	3 5-Runs 0930- Streets and Locations 0930- Apparatus Mechanical 1300- Paramedic Training 1800- Compartment Familiarization	4 5-Runs 0930- Pump Operations 0930- Paramedic Training 1300- Aerial Apparatus Ops 1300- Paramedic Training	5 5-Runs 1000- Paramedic Training 1300- Driver's Training 1300- Aerial Operations	6 3-Runs SRU/Trailer checks Station Maintenance
7 6-Runs Station Maintenance Generator Checks- Live 1200- Hydraulics	8 4-Runs Weekly/SCBA Checks 1400- Cold Water Rescue	9 7-Runs 0800- ACLS at WAAS 0930- Fire Suppression 1300- Pump Operations Generator-West	10 5-Runs 0930- Paramedic Training 1300- High Angle Rescue ***1800- High Angle Rescue	11 6-Runs 0800 ACLS @WAAS	12 6-Runs 0930- Aerial Operations 1300- Pump Operations	13 9-Runs Aerial checks Station Maintenance 1215- High Angle Rescue
14 6-Runs Station Maintenance Generator Checks	15 3-Runs Weekly/Monitor Checks 1300- Paramedic Training	16 2-Runs 0900- Paramedic Training 1300- Drivers Training Generator-West	17 7-Runs 0930- Wildland firefighting 1000- Confined Space Rescue ***1800- Confined Space Rescue	18 7-Runs 0930- Incident Critique 1300- Aerial Operations 1300- Drivers Training	19 12-Runs 0930- Fire Inspections 1300- High Angle Rescue	20 6-Runs Backup apparatus checks Station Maintenance
21 4-Runs Station Maintenance Generator Checks	22 2-Runs Weekly/Extinguisher Checks Eye Wash Stations 1415- Drivers Training	23 7-Runs 0930- Fitness and Wellness 0930- Incident Critique 1300- Pump Operations Generator-West	24 6-Runs 0930- Fitness and Wellness 0930- Wildland Firefighting 1300- Boat Operations 1330- Extrication	25 4-Runs 0930- Fitness and Wellness 0930- Structural Collapse 1300- High Angle Rescue	26 3-Runs 0900- Building Construction 1000- Streets and Locations 1400- Streets and Locations	27 9-Runs Aerial checks Station Maintenance
28 3-Runs Station Maintenance Generator Checks	29 5-Runs Weekly Checks Check tires on other equipment (trailers, fans, insulvac, wagon) 1300- Builing Contruction	30 9-Runs 0900- Compartment Familiarization 1300- Water Rescue 1300- Fire Suppression 1330- Extrication Generator-West	31 12-Runs 0930- Aerial Operations 1100- Streets and Locations 1330 - Pump Operations	1	2	3
4	5	February 2021 S M T W T F S 1 2 3 4 5 6 7 8 9 10 11 12 13 14 15 16 17 18 19 20 21 22 23 24 25 26 27 28		April 2021 S M T W T F S 1 2 3 4 5 6 7 8 9 10 11 12 13 14 15 16 17 18 19 20 21 22 23 24 25 26 27 28 29 30		

APRIL 2021

Sunday	Monday	Tuesday	Wednesday	Thursday	Friday	Saturday																																																																																											
28	29	30	31	1 0930- Water Rescue 1100- Incident Critique 1300- Fire Suppression	2 0930- Fire Inspection	3 0900-Pump Operations Station Maintenance																																																																																											
4 Station Maintenance Generator Checks- Live	5 0800- Drivers Test 1300-Drivers Test	6 Monthly/Weekly Checks 1300- Boat Operations 1400- Tactical Medic Generator-West-Live	7 0930- Incident Critique ***1800- Auto Extrication	8 0930-Building Construction 1000- Forcible Entry/ Hand Tools 1100- Search and Rescue 1300- Hose	9 0930- Forcible Entry 1100- Pump Operations 1200- Hose 1300- Ladders 1400- Aerial Operations	10 Aerial checks Station Maintenance																																																																																											
11 Station Maintenance Generator Checks	12 Weekly/SCBA Checks 0815- Officer Meeting 1200- Fire Suppression	13 0930- Search and Rescue 1030- SCBA 1130- High Angle Rescue 1400- Fitness and Wellness Generator-West	14 0930- Search and Rescue 1300- Ground Ladders ***1800- Fire Suppression	15 0930- Fire Suppression 1300- Search and Rescue 1430- Forcible Entry	16 0930- Ventilation 1300- Fire Suppression	17 Backup apparatus checks Station Maintenance																																																																																											
18 Station Maintenance Generator Checks	19 Weekly/Monitor Checks	20 0930- Incident critiques 1030- Hose Testing 1300- Hose Testing Generator-West	21 0930- Hand Tools ***1800- Hose Testing	22 0930-Hose Testing 1300-Hose Testing	23 0930- Confined Space Entry 1300- Familiarization Inspection	24 Aerial checks Station Maintenance																																																																																											
25 Station Maintenance Generator Checks	26 Weekly/Extinguisher Checks Eye Wash Stations Check tires on other equipment (trailers, fans, insulvac, wagon) 1300- Familiarization Inspection	27 0930- Hose Testing 1300- Pump Operations Generator-West	28 0930- Hose Testing 1400- Pump Operations	29 0930- Streets and Locations 1300- Pump Operations	30 0930-Hose Testing 1300- Hose Testing	1																																																																																											
2	3	<div>March 2021</div> <table><tr><td>S</td><td>M</td><td>T</td><td>W</td><td>T</td><td>F</td><td>S</td></tr><tr><td>1</td><td>2</td><td>3</td><td>4</td><td>5</td><td>6</td><td></td></tr><tr><td>7</td><td>8</td><td>9</td><td>10</td><td>11</td><td>12</td><td>13</td></tr><tr><td>14</td><td>15</td><td>16</td><td>17</td><td>18</td><td>19</td><td>20</td></tr><tr><td>21</td><td>22</td><td>23</td><td>24</td><td>25</td><td>26</td><td>27</td></tr><tr><td>28</td><td>29</td><td>30</td><td>31</td><td></td><td></td><td></td></tr></table>		S	M	T	W	T	F	S	1	2	3	4	5	6		7	8	9	10	11	12	13	14	15	16	17	18	19	20	21	22	23	24	25	26	27	28	29	30	31				<div>May 2021</div> <table><tr><td>S</td><td>M</td><td>T</td><td>W</td><td>T</td><td>F</td><td>S</td></tr><tr><td></td><td></td><td></td><td></td><td></td><td></td><td>1</td></tr><tr><td>2</td><td>3</td><td>4</td><td>5</td><td>6</td><td>7</td><td>8</td></tr><tr><td>9</td><td>10</td><td>11</td><td>12</td><td>13</td><td>14</td><td>15</td></tr><tr><td>16</td><td>17</td><td>18</td><td>19</td><td>20</td><td>21</td><td>22</td></tr><tr><td>23</td><td>24</td><td>25</td><td>26</td><td>27</td><td>28</td><td>29</td></tr><tr><td>30</td><td>31</td><td></td><td></td><td></td><td></td><td></td></tr></table>		S	M	T	W	T	F	S							1	2	3	4	5	6	7	8	9	10	11	12	13	14	15	16	17	18	19	20	21	22	23	24	25	26	27	28	29	30	31						
S	M	T	W	T	F	S																																																																																											
1	2	3	4	5	6																																																																																												
7	8	9	10	11	12	13																																																																																											
14	15	16	17	18	19	20																																																																																											
21	22	23	24	25	26	27																																																																																											
28	29	30	31																																																																																														
S	M	T	W	T	F	S																																																																																											
						1																																																																																											
2	3	4	5	6	7	8																																																																																											
9	10	11	12	13	14	15																																																																																											
16	17	18	19	20	21	22																																																																																											
23	24	25	26	27	28	29																																																																																											
30	31																																																																																																

MAY 2021

Sunday	Monday	Tuesday	Wednesday	Thursday	Friday	Saturday																																																																																				
25	26	27	28	29	30	1 6-Runs SRU/Trailer checks Station Maintenance 1300- Hydraulics																																																																																				
2 11-Runs Station Maintenance Generator Checks- Live	3 7-Runs Monthly/Weekly Checks	4 7-Runs 0930- Fitness and Wellness 1400- Tactical Medic Generator-West-Live	5 4-Runs 0930- Fitness and Wellness 1100- Aerial Operations 1100- High Angle Rescue	6 7-Runs 0930- Fitness and Wellness 1100- Hydraulics 1330- Pump Operations	7 10-Runs 1000- Fire Inspections 1300- Fire Inspections	8 6-Runs Aerial checks Station Maintenance																																																																																				
9 9-Runs Station Maintenance Generator Checks 1300- Paramedic Training	10 7-Runs Weekly/SCBA Checks 0930- EMS Regulations	11 10-Runs 0930- Public Service 1300- Equipment Maintenance Generator-West	12 7-Runs 0930- Fire Inspection ***1800- Fire Streams	13 6-Runs 0930- High Angle Rescue 0930- Paramedic Training 1300- Apparatus Maintenance	14 4-Runs 1300- Fire Inspection	15 3-Runs Backup apparatus checks Station Maintenance																																																																																				
16 4-Runs Station Maintenance Generator Checks	17 7-Runs Weekly/Monitor Checks 1030- High Angle Rescue 1130- Public Safety Education 1430- Incident Critique	18 6-Runs 0800- Paramedic Training 0930- Auto Extrication 0930- Apparatus Maintenance Generator-West	19 4-Runs 0900- Water Rewsue ***1800- High Angle Rescue	20 3-Runs 0930- Apparatus Maintenance 1300- Boat Operations	21 5-Runs 0930- Familiarization Inspections 1300- Familiarization Inspections	22 6-Runs Aerial checks Station Maintenance 0800- Public Service																																																																																				
23 7-Runs Station Maintenance Generator Checks	24 4-Runs Weekly/Extinguisher Checks Eye Wash Stations 1300- Fitness and Wellness 1400- Drivers Training	25 3-Runs 0930- Fire Streams 1300- Boat Operations Generator-West	26 5-Runs 0900- Truck Visit 0930- Wildland Firefighting 1315- Pump Operations	27 6-Runs 0930- High Angle Rescue 1300- Haz Mat	28 2-Runs 1030- Trench Rescue 1315- Preplans	29 3-Runs SRU/Trailer checks Station Maintenance																																																																																				
30 4-Runs Station Maintenance Generator Checks	31 7-Runs Weekly Checks Check tires on other equipment (trailers, fans, insulvac, wagon) Memorial Day	<div>April 2021</div> <table> <tr><td>S</td><td>M</td><td>T</td><td>W</td><td>T</td><td>F</td><td>S</td></tr> <tr><td></td><td></td><td></td><td></td><td>1</td><td>2</td><td>3</td></tr> <tr><td>4</td><td>5</td><td>6</td><td>7</td><td>8</td><td>9</td><td>10</td></tr> <tr><td>11</td><td>12</td><td>13</td><td>14</td><td>15</td><td>16</td><td>17</td></tr> <tr><td>18</td><td>19</td><td>20</td><td>21</td><td>22</td><td>23</td><td>24</td></tr> <tr><td>25</td><td>26</td><td>27</td><td>28</td><td>29</td><td>30</td><td></td></tr> </table>		S	M	T	W	T	F	S					1	2	3	4	5	6	7	8	9	10	11	12	13	14	15	16	17	18	19	20	21	22	23	24	25	26	27	28	29	30		<div>June 2021</div> <table> <tr><td>S</td><td>M</td><td>T</td><td>W</td><td>T</td><td>F</td><td>S</td></tr> <tr><td></td><td></td><td>1</td><td>2</td><td>3</td><td>4</td><td>5</td></tr> <tr><td>6</td><td>7</td><td>8</td><td>9</td><td>10</td><td>11</td><td>12</td></tr> <tr><td>13</td><td>14</td><td>15</td><td>16</td><td>17</td><td>18</td><td>19</td></tr> <tr><td>20</td><td>21</td><td>22</td><td>23</td><td>24</td><td>25</td><td>26</td></tr> <tr><td>27</td><td>28</td><td>29</td><td>30</td><td></td><td></td><td></td></tr> </table>		S	M	T	W	T	F	S			1	2	3	4	5	6	7	8	9	10	11	12	13	14	15	16	17	18	19	20	21	22	23	24	25	26	27	28	29	30				
S	M	T	W	T	F	S																																																																																				
				1	2	3																																																																																				
4	5	6	7	8	9	10																																																																																				
11	12	13	14	15	16	17																																																																																				
18	19	20	21	22	23	24																																																																																				
25	26	27	28	29	30																																																																																					
S	M	T	W	T	F	S																																																																																				
		1	2	3	4	5																																																																																				
6	7	8	9	10	11	12																																																																																				
13	14	15	16	17	18	19																																																																																				
20	21	22	23	24	25	26																																																																																				
27	28	29	30																																																																																							

JUNE 2021

Sunday	Monday	Tuesday	Wednesday	Thursday	Friday	Saturday
30	31 Memorial Day	1 8-Runs 0930- Familiarization Inspection 1100- Hose Training 1300- Swiftwater Rescue 1300- SCBA Generator-West-Live	2 1-Run 0930- Trench Review **1800- Trench Rescue classroom Incident Critiques	3 10-Runs 0930- High Angle Rescue 1300- Auto Extrication	4 7-Runs 1000- Swearing-in Ceremony 1300- OSHA Required classes	5 8-Runs Aerial checks Station Maintenance
6 3-Runs Station Maintenance Generator Checks- Live	7 8-Runs Monthly/Weekly Checks Small engine fuel change 0800- Trench Rescue	8 11-Runs 0930- Boat Operations 1400- Tactical Medic Generator-West	9 8-Runs 0930- Equipment Maintenance ***1800- Trench Rescue	10 7-Runs 0930- Incident Critiques	11 8-Runs 0945- Incident Critique 1045- Trench Rescue 1300- Streets and Locations	12 7-Runs Backup apparatus checks Station Maintenance
13 4-Runs Station Maintenance Generator Checks	14 11-Runs Weekly/SCBA Checks 1300- Incident Critiques	15 7-Runs 0930- Pump Operations 1300- Pump Operations Generator-West	16 8-Runs Steamboat Days 0930- Incident Critiques ***1800- Streets and Locations	17 11-Runs Steamboat Days 0930- Fire Inspections 1100- Streets and Locations 1300- Incident Critiques	18 6-Runs Steamboat Days 0930- Familiarization Inspections 1300- Familiarization Inspections	19 7-Runs Steamboat Days Aerial checks Station Maintenance
20 5-Runs Steamboat Days Station Maintenance Generator Checks 1030- Public Service	21 6-Runs Weekly/Monitor Checks 1345- Incident Critique	22 6-Runs 0930- High Angle Rescue 1300- Hazmat Operations Generator-West	23 6-Runs 0930- Aerial Operations 1300- Fire Streams	24 8-Runs 0930- Hose 1345- Hose Testing	25 4-Runs 0930- Familiarization Inspections	26 10-Runs SRU/Trailer checks Station Maintenance 1300- Public Service
27 7-Runs Station Maintenance Generator Checks	28 11-Runs Weekly/Extinguisher Checks Eye Wash Stations Check tires on other equipment (trailers, fans, insulvac, wagon) 1300- Pump Operations	29 5-Runs 0930- OSHA Required training 1030- Paramedic Training 1300- Structural Collapse Generator-West	30 8-Runs 0900- Truck Visit 0900- Fire Inspections 1300- Fitness and Wellness	1	2	3
4 Independence Day	5	May 2021 S M T W T F S 1 2 3 4 5 6 7 8 9 10 11 12 13 14 15 16 17 18 19 20 21 22 23 24 25 26 27 28 29 30 31		July 2021 S M T W T F S 1 2 3 4 5 6 7 8 9 10 11 12 13 14 15 16 17 18 19 20 21 22 23 24 25 26 27 28 29 30 31		

JULY 2021

Sunday	Monday	Tuesday	Wednesday	Thursday	Friday	Saturday
27	28	29	30	1 7-Runs 0930- Streets and Locations 1000- Fire Inspections 1300- Apparatus Maintenance	2 5-Runs 0930- Fire Inspections 1300- Fire Inspections	3 5-Runs Aerial checks Station Maintenance
4 10-Runs Station Maintenance Generator Checks- Live Independence Day	5 3-Runs Monthly/Weekly Checks	6 9-Runs 0930- Pump Operations 1300- Computers Generator-West-Live	7 6-Runs 0930- Fire Inspections 1300- Streets and Locations 1800- High Angle Rescue	8 4-Runs 1000- Hose 1300- Fire Inspections 1330- Drivers training	9 4-Runs 0930- High Angle Rescue 1330- Streets and Locations 1430- Fire Inspections	10 5-Runs Backup apparatus checks Station Maintenance
11 5-Runs Station Maintenance Generator Checks	12 5-Runs Weekly/SCBA Checks 300- Hazmat Containment Booms	13 7-Runs 0930- Pump Operations 1000- Fire Inspections 1300- Streets and Locations 1400- Tactical Medic Training Generator-West	14 2-Runs 0930- Fire Inspections 0930- High Angle Rescue 1300- SCBA *1800-SCBA/Fireground Survival	15 3-Runs 0930- Pump Operations 1000- Fire Inspections 1300- Hazmat	16 7-Runs 0945- Confined Space Rescue 1315- Fire Inspections	17 6-Runs Aerial checks Station Maintenance
18 6-Runs Station Maintenance Generator Checks	19 6-Runs Weekly/Monitor Checks	20 4-Runs 0930- High Angle Rescue 1000- Fire Inspections 1300- Confined Space Rescue Generator-West	21 5-Runs 0930- Hazmat Containment Booms 1300- Hazmat Containment Booms	22 8-Runs 0930- Extrication 1330- Aerial Operations 1400- Apparatus Maintenance	23 7-Runs 0930- Extrication	24 6-Runs SRU/Trailer checks 1045- Public Service
25 13-Runs Station Maintenance Generator Checks	26 5-Runs Weekly/Extinguisher Checks Eye Wash Stations Check tires on other equipment (trailers, fans, insulvac, wagon) Pressure test auto valves	27 8-Runs 0930- Apparatus Maintenance 0930- Hose 0930- Annual Ladder Tests 1330- Drivers training 1500- Water Rescue Generator-West	28 11-Runs 0930- Annual Ladder Tests 0930- Drivers training 1000- Apparatus Maintenance 1315- Fitness and Wellness	29 5-Runs 0930- Annual Ladder Tests 0930- High Angle Rescue 0930- Focible Entry 1300- Fitness and Wellness	30 7-Runs 0930- Fire Inspections 1300- Fire Inspections	31 3-Runs Aerial checks Station Maintenance
1	2	June 2021 S M T W T F S 1 2 3 4 5 6 7 8 9 10 11 12 13 14 15 16 17 18 19 20 21 22 23 24 25 26 27 28 29 30		August 2021 S M T W T F S 1 2 3 4 5 6 7 8 9 10 11 12 13 14 15 16 17 18 19 20 21 22 23 24 25 26 27 28 29 30 31		

AUGUST 2021

Sunday	Monday	Tuesday	Wednesday	Thursday	Friday	Saturday
1 2-Runs Station Maintenance Generator Checks- Live	2 4-Runs Monthly/Weekly Checks Station Maintenance	3 8-Runs 0930- Monthly Checks 1300- High Angle Rescue Generator-West-Live	4 7-Runs 0930- Paramedic Training 1030- Streets and Locations ***1800- Fire Streams	5 10-Runs 0930- Boat Operations 1330- Familiarization Inspections	6 7-Runs 0800- Apparatus Checks 0930- Apparatus Maintenance 1030- Safety	7 9-Runs Backup apparatus checks Station Maintenance
8 8-Runs Station Maintenance Generator Checks	9 5-Runs Weekly/SCBA Checks	10 5-Runs 0900- Fire Inspections 0930- Fire Extinguishers 1300- Extrication 1300- Incident Critiques Generator-West	11 6-Runs 0930- Fire Inspections 0930- Station Maintenance **1800- Streets and Locations Incident Critiques	12 6-Runs 0930- Fire Extinguishers 1000- Fire Inspections 1300- Fire Extinguishers	13 8-Runs 1000- Search and Rescue 1045- Incident Critiques 1315- Fire Inspections	14 9-Runs Aerial checks Station Maintenance
15 7-Runs Station Maintenance Generator Checks	16 9-Runs Weekly/Monitor Checks 1400- Fire Behavior	17 7-Runs 0930- Fire Extinguishers 1030- Streets and Locations 1300- Fire Extinguishers 1400- Public Safety Education Generator-West	18 5-Runs 0930- Structural Collapse ***1800-Structural Collapse	19 12-Runs 1000- Fire Extinguishers 1300- Structural Collapse 1330- Streets and Locations	20 7-Runs 0930- Pump Testing 1000- Structural Collapse 1300- Structural Collapse 1300- Size Up	21 6-Runs SRU/Trailer checks Station Maintenance 1200- Public Service
22 8-Runs Station Maintenance Generator Checks	23 4-Runs Weekly/Extinguisher Checks Eye Wash Stations 1030- Fire Extinguishers 1730- Water Rescue	24 3-Runs 0930- Communications 0930- OSHA Requires classes 1330- Communications Generator-West	25 11-Runs 0930- Forcible Entry 1300- Infection Control 1300- Fire Suppression 1400- Building Construction	26 7-Runs 0930- Pump Operations 1300- Streets and Locations 1500- High Angle Rescue	27 7-Runs 0930- Building Construction 0930- Extrication 1030- Size Up 1300- Search and Rescue	28 4-Runs Aerial checks Station Maintenance
29 4-Runs Station Maintenance Generator Checks	30 9-Runs Weekly Checks Check tires on other equipment (trailers, fans, insulvac, wagon) Pressure test auto valves	31 6-Runs 0930- Swiftwater Rescue 1300- Hazmat 1300- Streets and Locations Generator-West	1	2	3	4
5	6 Labor Day	July 2021 S M T W T F S 1 2 3 4 5 6 7 8 9 10 11 12 13 14 15 16 17 18 19 20 21 22 23 24 25 26 27 28 29 30 31		September 2021 S M T W T F S 1 2 3 4 5 6 7 8 9 10 11 12 13 14 15 16 17 18 19 20 21 22 23 24 25 26 27 28 29 30		

SEPTEMBER 2021

Sunday	Monday	Tuesday	Wednesday	Thursday	Friday	Saturday
29	30	31	110-Runs 0930- Water Rescue at Aquatic Center 1000- Fire Inspections **1800- Water Rescue at Aquatic Center	27-Runs 0900- Fire Inspections 0930- Pump Operations 1300- Pump Operations	37-Runs 0930- Pump Testing	47-Runs Backup apparatus checks Station Maintenance
54-Runs Station Maintenance Generator Checks- Live	67-Runs Monthly/Weekly Checks Labor Day	76-Runs 0930- Pump Testing 1400- Tactical Medic Generator-West-Live	89-Runs 0900- Fire Inspections 0930- Pump Testing ***1800- Fire Suppression	94-Runs 0900- Fire Inspections 0930- Pump Testing 1245- Public Service	106-Runs 0930- Pump Testing 1000- Fire Inspections	114-Runs Aerial checks Station Maintenance 0900- Public Service
123-Runs Station Maintenance Generator Checks	1312-Runs Weekly/SCBA Checks 1030- Fitness and Wellness	148-Runs 0930- Fitness and Wellness 1300- Pump Testing Generator-West	156-Runs 0815- Incident Critique 1000- Fitness and Wellness 1430- Incident Critique 1800- Lock and Dam 5A Tour	167-Runs 0930- Size Up 1300- Fitness and Wellness 1300- Fire Inspections 1300- OSHA Required classes	176-Runs 0930- Pump Testing 1400- Hose	189-Runs SRU/Trailer checks Station Maintenance
197-Runs Station Maintenance Generator Checks	204-Runs Weekly/Monitor Checks	218-Runs 0930- Hose 0930- Size Up 1300- Water Rescue Generator-West	229-Runs 0930- Flu Shots 1130- Public Service 1330- Fitness and Wellness	237-Runs 0930- Flu Shots 1230- Communications	249-Runs 0930- Flu Shots 1300- Streets and Locations	259-Runs Aerial checks Station Maintenance
2610-Runs Station Maintenance Generator Checks	272-Runs Weekly/Extinguisher Checks Eye Wash Stations Check tires on other equipment (trailers, fans, insulvac, wagon) 1300- Pump Operations 1400- High Angle Rescue	286-Runs 0930- Station Maintenance 1300- Aerial Operations Generator-West	296-Runs 0930- Streets and Locations 1000- Fire Inspections 1300- Pump Operations	3016-Runs 0930- OSHA Required Classes 1300- Apparatus Maintenance	1	2
3	4	August 2021 S M T W T F S 1 2 3 4 5 6 7 8 9 10 11 12 13 14 15 16 17 18 19 20 21 22 23 24 25 26 27 28 29 30 31		October 2021 S M T W T F S 1 2 3 4 5 6 7 8 9 10 11 12 13 14 15 16 17 18 19 20 21 22 23 24 25 26 27 28 29 30 31		

OCTOBER 2021

Sunday	Monday	Tuesday	Wednesday	Thursday	Friday	Saturday																																																																																				
26	27	28	29	30	1 0930- Fire Inspections 1330- Public Safety Education	2 3-Runs Backup apparatus checks Station Maintenance																																																																																				
3 10-Runs Station Maintenance Generator Checks- Live	4 2-Runs Monthly/Weekly Checks Send Amy UTV Hours 1300- Size Up	5 8-Runs 0930- Xcel Energy Class 1315- Truck Visit 1400- Streets and Locations 1430- Haz Mat Generator-West-Live	6 8-Runs 1330- Xcel Energy Class ***1800- SCBA Drill	7 8-Runs 0900- Truck Visit 0930- Haz Mat 1300- Safety	8 9-Runs 0930- Fire Inspections 1300- Truck Visit	9 11-Runs Aerial checks Station Maintenance 0930- Public Surface																																																																																				
10 2-Runs Station Maintenance Generator Checks	11 6-Runs Weekly/SCBA Checks Change all Batteries in Scott Equip Columbus Day	12 8-Runs 0930- Haz Mat 0930- Fire Inspections 1330- Haz Mat 1400- Tactical Medic 1400- Truck Visit Generator-West	13 6-Runs 0930- OSHA Required training 0930- Truck Visit 1030- High Angle Rescue ***1800- High Angle Rescue	14 6-Runs 0930- Truck Visit 1000- Truck Visit 1300- Truck Visit 1300- Station Maintenance	15 9-Runs 0945- Fire Inspections 1300- Pump Operations	16 4-Runs SRU/Trailer checks Station Maintenance																																																																																				
17 1-Run Station Maintenance Generator Checks	18 7-Runs Weekly/Monitor Checks	19 8-Runs 0930- Auto Extrication 0930- Streets and Locations 1045- Driver's Training 1600-Auto Extrication @ Matejka Generator-West	20 6-Runs 0930- Auto Extrication 0930- Station Maintenance 1030-Rescue Carries 1300- Auto Extrications ***1800- Compart Familiarization	21 7-Runs 0830- Public Service 1300- Fire Inspections 1330- Decon	22 9-Runs 0930- Hazmat Chemistry 1300- Hazmat Technician	23 3-Runs Aerial checks Station Maintenance																																																																																				
24 8-Runs Station Maintenance Generator Checks 1000- Hydraulics	25 7-Runs Weekly/Extinguisher Checks Eye Wash Stations Check tires on other equipment (trailers, fans, insulvac, wagon) 1300- Decon	26 10-Runs 0800- Driver Test 1300- Station Maintenance 1345- Streets and Locations Generator-West	27 6-Runs 0930- Truck Visit 1030- Hazmat Chemistry 1030- Paramedic Training 1300- Hazmat	28 8-Runs 0800- EMT Training 1000- Fire Inspections 1300- High Angle 1530- Truck Visit	29 13-Runs 0930- Fire Inspections 1300- Fire Inspections	30 8-Runs Backup apparatus checks Station Maintenance																																																																																				
31 7-Runs Station Maintenance Generator Checks	1	<div>September 2021</div> <table><tr><td>S</td><td>M</td><td>T</td><td>W</td><td>T</td><td>F</td><td>S</td></tr><tr><td></td><td></td><td></td><td>1</td><td>2</td><td>3</td><td>4</td></tr><tr><td>5</td><td>6</td><td>7</td><td>8</td><td>9</td><td>10</td><td>11</td></tr><tr><td>12</td><td>13</td><td>14</td><td>15</td><td>16</td><td>17</td><td>18</td></tr><tr><td>19</td><td>20</td><td>21</td><td>22</td><td>23</td><td>24</td><td>25</td></tr><tr><td>26</td><td>27</td><td>28</td><td>29</td><td>30</td><td></td><td></td></tr></table>		S	M	T	W	T	F	S				1	2	3	4	5	6	7	8	9	10	11	12	13	14	15	16	17	18	19	20	21	22	23	24	25	26	27	28	29	30			<div>November 2021</div> <table><tr><td>S</td><td>M</td><td>T</td><td>W</td><td>T</td><td>F</td><td>S</td></tr><tr><td></td><td>1</td><td>2</td><td>3</td><td>4</td><td>5</td><td>6</td></tr><tr><td>7</td><td>8</td><td>9</td><td>10</td><td>11</td><td>12</td><td>13</td></tr><tr><td>14</td><td>15</td><td>16</td><td>17</td><td>18</td><td>19</td><td>20</td></tr><tr><td>21</td><td>22</td><td>23</td><td>24</td><td>25</td><td>26</td><td>27</td></tr><tr><td>28</td><td>29</td><td>30</td><td></td><td></td><td></td><td></td></tr></table>		S	M	T	W	T	F	S		1	2	3	4	5	6	7	8	9	10	11	12	13	14	15	16	17	18	19	20	21	22	23	24	25	26	27	28	29	30					
S	M	T	W	T	F	S																																																																																				
			1	2	3	4																																																																																				
5	6	7	8	9	10	11																																																																																				
12	13	14	15	16	17	18																																																																																				
19	20	21	22	23	24	25																																																																																				
26	27	28	29	30																																																																																						
S	M	T	W	T	F	S																																																																																				
	1	2	3	4	5	6																																																																																				
7	8	9	10	11	12	13																																																																																				
14	15	16	17	18	19	20																																																																																				
21	22	23	24	25	26	27																																																																																				
28	29	30																																																																																								

NOVEMBER 2021

Sunday	Monday	Tuesday	Wednesday	Thursday	Friday	Saturday
31	1 3-Runs Monthly/Weekly Checks 1300- Fire Suppression 1400- Streets and Locations	2 9-Runs 1030- EMT Training Generator-West-Live	3 9-Runs 0800- Rochester Fire Code Class 0930- Paramedic Training 1300- Open Enrollment ***1800- Hazmat	4 9-Runs 0800- Rochester Fire Code Class 0930- Apparatus Maintenance 1000- Fitness and Wellness 1300- Open Enrollment 1400- Apparatus Maintenance	5 6-Runs 0930- Fitness and Wellness 1030- Paramedic Training 1300- Open Enrollment 1400- Station Maintenance	6 3-Runs Aerial checks Station Maintenance
7 6-Runs Station Maintenance Generator Checks- Live	8 7-Runs Weekly/SCBA Checks	9 4-Runs 0930- Size Up 1300- Fire Suppression 1400- Tactical Medic 1500- Forcible Entry Generator-West	10 8-Runs 0900- Fire Inspections 0930- Fire Suppression ***1800- Search and Rescue Fire Suppression	11 11-Runs 1030- Forcible Entry 1115- Aerial Operations 1200- Ladders Veterans Day	12 8-Runs 0930- Aerial Operations 1045- Search and Rescue 1300- Fire Inspections	13 13-Runs SRU/Trailer checks Station Maintenance
14 8-Runs Station Maintenance Generator Checks	15 4-Runs Weekly/Monitor Checks	16 9-Runs 0930- Station Maintenance 1300- Equipment Maintenance 1300- SCBA Generator-West	17 9-Runs 0930- Extrication 0930- Hazmat 1300- SCBA Demo ***1800- Hazmat Incident Critiques	18 9-Runs 0930- Confined Space 1000- Fire Inspections 1300- Incident Critiques 1845- Public Service	19 6-Runs 0930- Fire Inspections 1300- Extrication 1300- Water Rescue 1300- Paramedic Training 1300- ESO	20 7-Runs Aerial checks Station Maintenance
21 10-Runs Station Maintenance Generator Checks	22 9-Runs Weekly/Extinguisher Checks Eye Wash Stations 1300- Incident Critiques	23 9-Runs 0930-Driver Training 1030- Fire Inspections 1300- Foam Generator-West	24 3-Runs 0930-Aerial Maintenance 1300-Aerial Maintenance	25 2-Runs 0800- Apparatus Checks Thanksgiving	26 6-Runs 0815- App Compart Familiarization	27 6-Runs Backup apparatus checks Station Maintenance
28 10-Runs Station Maintenance Generator Checks	29 2-Runs Weekly Checks Check tires on other equipment (trailers, fans, insulvac, wagon) Pressure test auto valves	30 6-Runs 0800- Annual Physicals 0930- Fire Inspections 1315- Ice Rescue 1400- Tactical Medic Generator-West	1	2	3	4
5	6	October 2021 S M T W T F S 1 2 3 4 5 6 7 8 9 10 11 12 13 14 15 16 17 18 19 20 21 22 23 24 25 26 27 28 29 30 31		December 2021 S M T W T F S 1 2 3 4 5 6 7 8 9 10 11 12 13 14 15 16 17 18 19 20 21 22 23 24 25 26 27 28 29 30 31		

DECEMBER 2021

Sunday	Monday	Tuesday	Wednesday	Thursday	Friday	Saturday
28	29	30	1 0800- Annual Physicals 1045-Fire Inspections 1300-Ice Rescue 1800- Annual Physicals	2 0800- Annual Physicals 0930- Fire Behavior 1300-Ice Rescue	3 0930-Fire Inspections 1300-Fire Inspections	4 Aerial checks Station Maintenance
5 Station Maintenance Generator Checks- Live	6 Monthly/Weekly Checks Send Amy UTV Hours 0930- Vehicle Maintenance	7 0930- Ice Rescue 0930- ESO upgrade 1330- Hose Generator-West-Live	8 0945- Equipment Maintenance 1000- Hand Tools 1030- Hose 1330- Public Safety Education ***1800-Ice Rescue	9 0930- Equipment Maintenance 1300- Apparatus Maintenance	10 0930-Fire Inspections 1300-Fire Inspections	11 SRU/Trailer checks Tanker Station Maintenance
12 Station Maintenance Generator Checks	13 Weekly/SCBA Checks 1300-Ice Rescue	14 0930- ESO Upgrade 0930- Boat Operations 1400- Tactical Medic Generator-West	15 0930- Hand Tools 1300- Hand Tools **1800- ICS/ Storm Preparation	16 0945- Fire Inspections 1030- Streets and Locations 1100- Fire Inspections 1400- ESO Upgrade	17 1000- Fire Inspections 1100- Fitness and Wellness 1315- Fire Inspections	18 Aerial checks Tanker Station Maintenance
19 Station Maintenance Generator Checks	20 Weekly/Monitor Checks 0815- Officers Meeting	21 0930- EMS Regulations 0930- Fire Inspections 1345- Apparatus Maintenance 1415- Truck Visits- Card Distribution for WFC Generator-West	22 0930- Equipment Maintenance 1000- Smoke Detector Install 1000- Fire Inspections 1300- RIT Training	23 0830- Compartment Familiarization 1015- Hose Maintenance	24 0930- Paramedic Training 1300- Fire Suppression Christmas Eve	25 Backup apparatus checks Tanker Station Maintenance Christmas
26 Station Maintenance Generator Checks	27 Weekly/Extinguisher Checks Eye Wash Stations Check tires on other equipment (trailers, fans, insulvac, wagon) Pressure test auto valves	28 0930-Pump Operations 1300- Hazmat Generator-West	29 0930- Compartment Familiarization 1300- Rules,Regs, Memos	30 0930- High Angle Rescue 1315- Fire Inspections 1415- Pump Operations	31 0930- High Angle Rescue 0930- Streets and Locations 1300- Streets and Locations 1300- Fire Suppression	1
2	3	November 2021 S M T W T F S 1 2 3 4 5 6 7 8 9 10 11 12 13 14 15 16 17 18 19 20 21 22 23 24 25 26 27 28 29 30		January 2022 S M T W T F S 1 2 3 4 5 6 7 8 9 10 11 12 13 14 15 16 17 18 19 20 21 22 23 24 25 26 27 28 29 30 31		