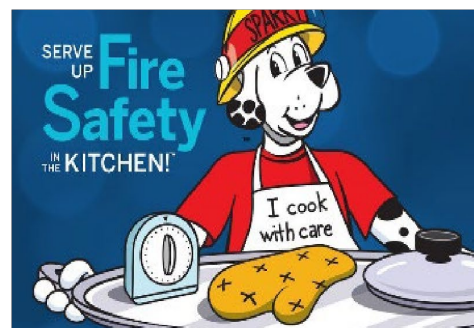
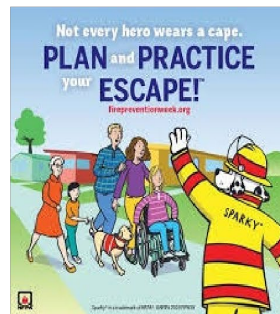
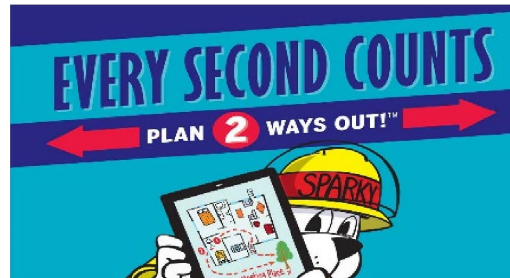


Winona Fire Department

2022 Annual Report



100 YEARS

1922-2022



FIRE PREVENTION WEEK™

firepreventionweek.org





Winona Fire Department

Serving Since November 1, 1889

Headquarters – 451 East 3rd Street

Winona, MN 55987-3912

Phone: 507-457-8266

Fax: 507-452-0345

<https://www.cityofwinona.com/201/Fire-Department>



Mayor, City Council, City Manager,

RE: Winona Fire Department 2022 Annual Report

On behalf of the members of the Winona Fire Department, I proudly present the Winona Fire Department annual report as a reflection of the dedication, professionalism and commitment to the departments vision of reducing and mitigating fire, rescue and medical events in the community we serve.

The Winona Fire Department responded to 2742 calls for help in 2022. Rescue and emergency medical calls account for 66% (1808) of our overall call volume. With an aging population, projections point to continued increase in emergency medical response. With current staffing and paramedic licensure the department will continue to provide advanced life support (ALS) engine response from both stations.

The Winona Fire Department responded to 934 (34%) fire related calls in 2022. The department extinguished 38 fires of various types during the year; all but 9 (general pages) were handled by on-duty staff.

To help establish appropriate fire insurance premiums for residential and commercial properties, Insurance Service Organization (ISO) provides that information through the Public Protection Classification (PPC) Program. The City of Winona was reevaluated once again in 2022, and continues to hold a PPC rating of 2. The only a few cities in the State of Minnesota enjoy this prestigious classification. This classification is a direct reflection of continued council support for public safety and essential service provided to the citizens of Winona.

This report contains detailed information and statistics of the department. You are encouraged to contact this office for any further explanation or to tour our facilities.

Respectfully Submitted,

Curt Bittle, Fire Chief

Code of Ethics

The Winona Fire Department is dedicated to the protection and preservation of life and property against fire, emergency medical conditions and other emergencies coming under its jurisdiction. Towards this endeavor, members of the department strive to live according to ethical principles consistent with professional conduct and shall;

Maintain the highest standards of personal integrity, be honest and straightforward in dealing with others and avoid conflicts of interest.

Place the public's safety and the safety of firefighters above all concerns; be supportive of training and education which promote safe living and working conditions.

Be mindful of the needs of others and assist them freely in developing their skills, abilities, and talents to the fullest extent; offer encouragement to those trying to better themselves, the Department and the Fire Service.

Be Supportive of the Minnesota State Fire Code, and the fire protection needs of the City of Winona.

Foster creativity and be open to consider innovations that may better enable the performance of the duties and responsibilities of the Winona Fire Department.

Mission Statement

The primary mission of the Winona Fire Department is to provide a range of programs designed to protect the lives and property of the inhabitants of the City of Winona from the adverse effects of fires, sudden medical emergencies, or exposure to dangerous conditions created by either man or nature.

The department will continue to provide for the expanding needs of the community beyond the extinguishment of fires.



Winona Fire Department 2022 Annual Report

Table of Contents

<u>Page</u>	<u>Section</u>
1.....	Jurisdiction Protected
1.....	City of Winona Representatives
2.....	Organizational Statement
3.....	Organizational Flow Chart
4.....	Full Time Roster
5.....	Training
6.....	Part Time Program
7.....	Functions at the Workplace
7.....	Performance of Duties
7.....	Emergency Response
8.....	Annual Testing of Fire Hose
9.....	2022 Statistics
9.....	Overlapping Calls
9.....	Pages
10.....	Emergency Record
11.....	Injuries
11.....	Mutual Aid
11.....	Response Time
11.....	Comparable Fire Loss
12.....	Bureau of Fire Prevention
12.....	Building Inspections
12.....	Permits, Licenses & Certificates
12.....	Fire Investigations
13.....	Prevention through Education
13.....	Public Education
14.....	2022 News
15.....	Daily Activities



Stop



Drop



Roll

Jurisdiction Protected

The Winona Fire Department protects: 24 sq. miles in the city
26,199 people in the city

Within the Winona city limits there is one airport, ten assisted living/nursing homes, one hospital, two universities with associated off campus student dwelling units and one technical college. The Winona Fire Department protects 18.84 sq. miles of land area and 5.29 sq. miles of water area. Winona Fire Department also has mutual aid contracts with other departments in the surrounding area.



Mayor

Scott D. Sherman

City Manager

Chad Ubl

Council Members

Steve Young	1 st Ward
Jeff Hyma	2 nd Ward
Pamela Eyden	3 rd Ward
George Borzyskowski	4 th Ward
Jerome Christenson	At Large
Aaron Repinski	At Large

Winona Fire Department Organizational Statement

Per OSHA 1910.156 and NFPA 1500 Chapter 2 (1992 Edition)

Curt Bittle

January 1, 2023

Fire Chief

Date

Organizational Chart

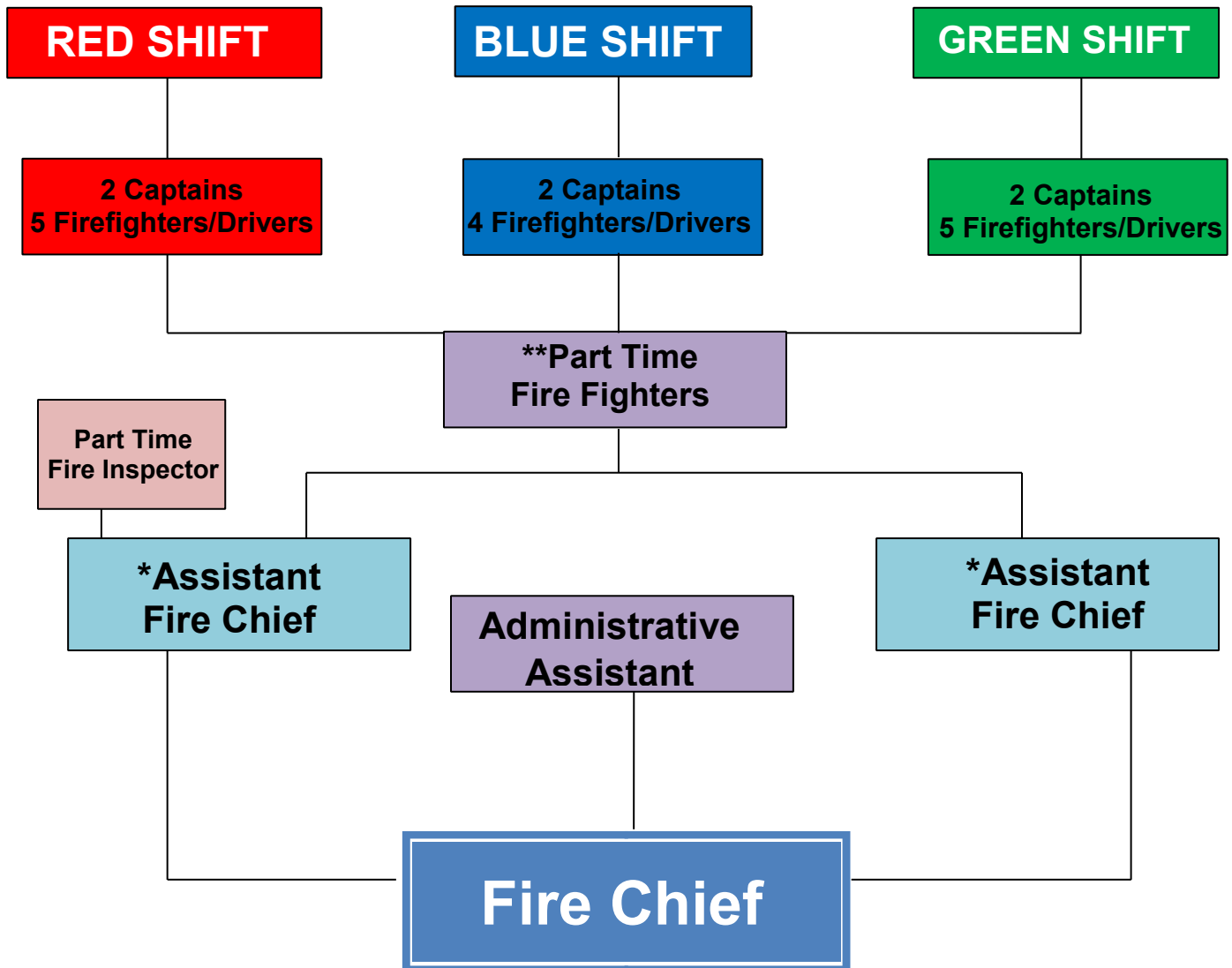
The organizational chart of the Winona Fire Department, as of January 1, 2022, is attached to this statement. As of that date, the department is authorized:

- 1 Fire Chief
- 2 Assistant Chiefs
- 6 Captains
- 14 Firefighter / Drivers
- 10 Active Part-time Firefighters

The Fire Chief and Two Assistant Chiefs work a 40-hour work week. One Assistant Chief is in charge of fire prevention and public education; and the other Assistant Chief is in charge of training and the part time program. Both Assistant Chiefs are of equal rank and answer directly to the Fire Chief. The 6 Captains and 14 career Firefighter/Drivers are normally assigned to 24-hour shifts averaging 56 hours per week. The 20 career personnel that are assigned to 24-hour shifts are divided into three shifts Red, Blue and Green. Each shift has two officers (Captains) assigned to it plus 4 or 5 Firefighter/Drivers. The Captain at the Central Station is the "Company Officer". The part time firefighters are paid on call.



Winona Fire Department



- * One Assistant Fire Chief is primarily responsible for Fire Prevention, Public Education, Investigations, etc.
- * One Assistant Chief is primarily responsible for training, part time program, hazardous materials, etc.
- ** There are a minimum of 15 and a maximum of 30 part time firefighters authorized by City Council. The numbers will vary.

2022 Employee Roster

Fire Chief	Anniversary Date
Curt Bittle	08-18-92
Assistant Fire Chiefs	
Jason Theusch	10-14-99
Joel Corcoran	04-19-02
Captains	
Brandon Luehmann	11-05-05
Matt Lisowski	12-23-05
Kirk Skogebo	03-26-09
Matt Yackel	12-15-10
Shaun Bartelson	01-02-11
Brandon Czapslewski	01-02-12
Firefighters / Drivers / Paramedics	
Mark Allred	12-24-04
Nathan Speltz	06-21-11
Derick Ritter	09-25-11
Pete Brueggen	04-27-13
Mike Allred	05-11-14
Tom Connell	05-21-16
Brad Bartelson	05-06-17
Tim Carlson	01-01-18
Matt Brown	01-03-17
Firefighter / Driver	
Mark Vieth	05-23-07
Charles Mayer	04-13-14
Ryan Geiger	07-14-15
Bailey Jensen	01-03-19
Andrew Meyer	02-21-22
Administrative Assistant	
Crystal Srock	08-13-12
Retired	
Shawn Kohner	04-13-02 to 02-04-2022

Training

Assistant Chief Joel Corcoran is the assistant chief in charge of training. Assistant Chief Joel Corcoran plans, schedules and monitors all training whether it is in house training or outside training at other facilities. Fire Department training is divided into several general areas including: firefighting, emergency medical services, hazardous material, and rescue. It is recognized that much of the training overlaps; however, these are general guidelines for record keeping purposes. Assistant Chief Joel Corcoran also maintains the training records of all the Winona Fire Department Personnel by keeping all the records and certificates in their own personal binders. These binders are available for inspection by any regulatory agency or the individual.



Prior to becoming a career firefighter, an individual must successfully complete Basic Firefighting training and be a certified Firefighter I by the State Fire Service Certification Board, and be Certified as an Emergency Medical Technician by EMS Regulatory Board.

Assistant Chief Joel Corcoran is also in charge of the part time firefighters. Part time personnel usually train on the first three Wednesday nights of each month for a total of three hours each night. They are also given opportunities to attend training outside of the department. In addition to regular training, part time personnel are encouraged to participate in the “ride along” program. To participate in the ride along program the part time employee must have prior approval of the Assistant Chief In charge of training. Other requirements are Successful completion of Basic Firefighter Training Program (to be allowed to combat and extinguish fires) and certified as a “First Responder” or “Emergency Medical Technician” (to be allowed to assist with emergency medical calls). A part time ride along can be conducted between the hours of 0800 and 2200. This is an opportunity for the part time fire fighters to become familiar with the apparatus and daily operations at the stations and to gain experience.



Part Time Program

The part time program was started in June of 1992. Part time firefighters go through the same hiring process as the full-time employees, including a written test, agility test and interview. They are paid an hourly rate based upon their level of certification.



Part Time Personnel Certification Levels

Last Name	First Name	Step	Certification Level	EMS / Paramedic	Haz/Mat
Auman	Mitchel	D	II	EMT	OPER
Brand	Reo	D	II	EMT	OPER
Cottrell	Daniel	D	II	EMR	OPER
Douglas	Paul	D	II	EMR	TECH
Harris	Jeffery	D	II	EMT	OPER
Merchlewitz	Rodney	D	II	EMR	TECH
Multhaup	Trevor	D	II	Paramedic	OPER
Passehl	Craig	D	II	EMT	TECH
Romine	Wesley	D	II	EMT	OPER
Varner	Tyrell	D	II	EMT	OPER

Functions at the Workplace

Career and part time personnel maintain fire department facilities, apparatus, vehicles, and equipment. Major repairs beyond the expertise and time constraints of personnel, are performed at the City of Winona Central Garage, or contracted out.

Performance of Duties

All personnel are expected to perform the arduous tasks of an interior structural firefighter. Additionally, members are expected to perform emergency medical services, rescue operations and certain corrective actions at hazardous material incidents.

It is the intention of the Winona Fire Department to ensure that its members are properly trained and equipped to perform the tasks expected of them, to provide for their safety and to be in compliance with all regulatory agencies. No member of the department is ever expected to perform duties beyond the scope and intention of their training, personal protective equipment and emergency response equipment.

Emergency Response

Currently the Winona Fire Department maintains 5 Personnel on duty, 24 hours per day, every day of the year.

The 5 personnel are divided between the two stations and come together for training, apparatus maintenance and certain social events.

Shift Captains are authorized to “page” off duty and part time personnel whenever the need is recognized and shall page all personnel for all confirmed structure fires.



Annual Service Testing of Fire Hose

Captain Matt Lisowski

All Winona Fire Department fire hose on apparatus or in storage is inspected and pressure tested annually. The purpose of the service test is to insure the safety and reliability of the fire hose when it is used at each incident.



CL	Cross Lay–Precon
HR	Hi Rise Pack
HB	Hose Bed
MU	Make Up Line
B	Blitz Line–Precon

Hose Summary 2022	1 ½ “	1 ¾ “	2 ½ “	3”	5”
Engine 1		400’ PC	800’ HB		600’ HB
		200’ HR	400’ PC		50’ MU
Engine 2		400’ PC	800’ HB		600’ HB
		200’ HR	400’ PC		50’ MU
Truck 3		400’ PC	800’ HB		550’ HB
		100’ HR	200’ PC		50’ MU
Engine 4		400’ PC	800’ HB		600’ HB
		200’ HR	400’ PC		50’ MU
Truck 1		400’ PC	800’ HB		600’ HB
		200’ HR	200’ PC		50’ MU
Tanker 1	600’ HB		500’ HB	50’	
Boat	50’				
Hose Tower or Storage	450’	1,300’	500’	600’	250’
Bought New		200’			300’
Retired		200’	100’		400’



2022 Statistics

According to the National Fire Protection Agency (NFPA), a Structural Fire is defined as follows: “any fire that requires the use of a 1 ½ inches or larger fire attack hose line and that also requires the use of self-contained breathing apparatus for members entering the hazardous area”.

Recent history of this type of fire is:

2012	2013	2014	2015	2016	2017	2018	2019	2020	2021	2022
8	16	20	22	13	7	11	14	10	21	16

Overlapping Calls

When we receive calls for assistance prior to clearing the scene of a previous call, it is defined as an overlapping call. It would be extremely difficult to respond to this type of call in a timely manner with less than the mandated 5-person crew. The record for this type of call is shown in the chart.



2012	2013	2014	2015	2016	2017	2018	2019	2020	2021	2022
171	179	178	204	167	188	220	232	208	219	301

Pages

Fire Officers are authorized to page off-duty personnel and part time personnel whenever the need arises. They are to page for assistance at all confirmed structure fires.

There were 9 General Pages in 2022

2012	2013	2014	2015	2016	2017	2018	2019	2020	2021	2022
15	16	20	25	17	14	10	17	12	20	9

Average number of personnel responding to *General Pages*. These numbers do not include the minimum staff level of five (5) or the chief officers.

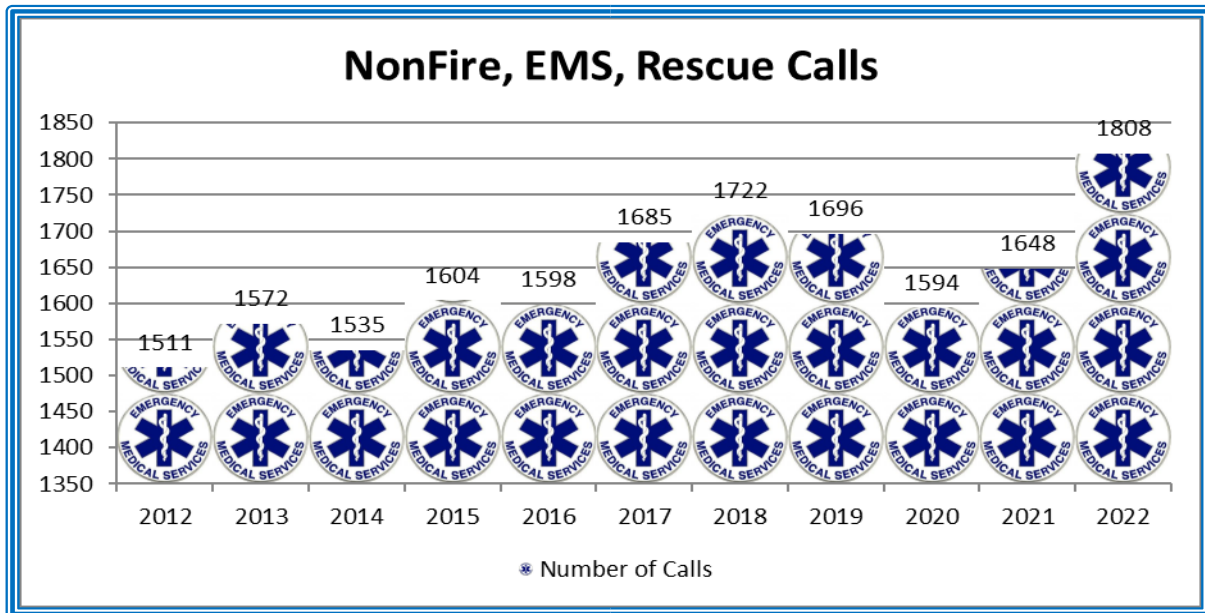
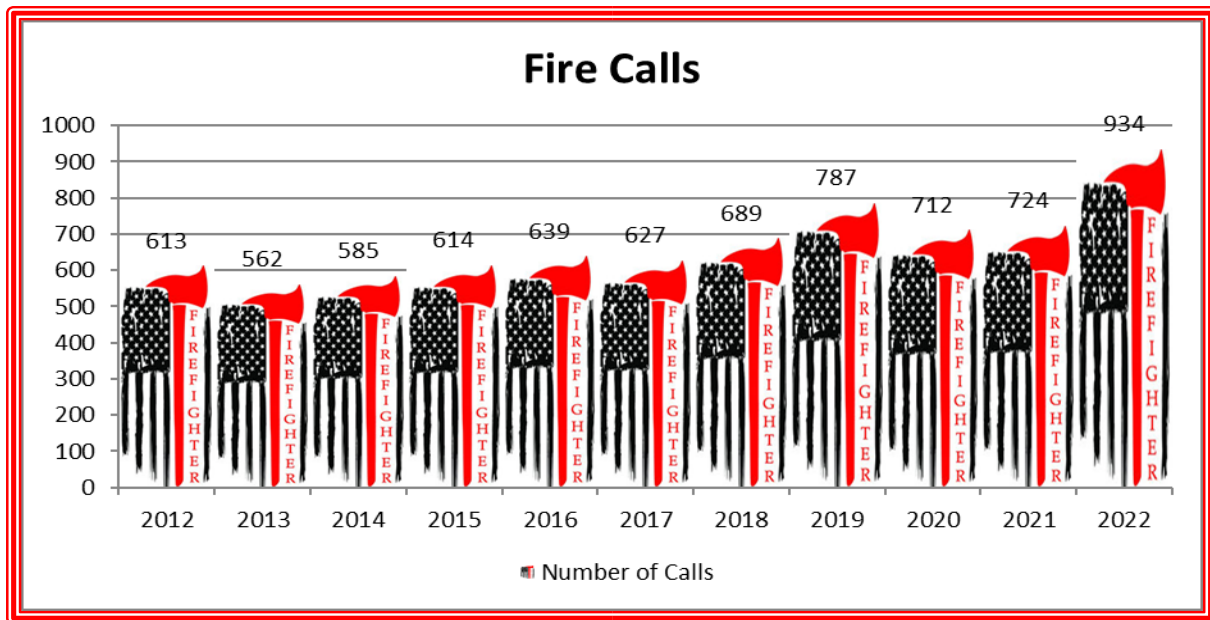
Within 5 Minutes	.333 Personnel
Within 10 Minutes	4.3 Personnel
Within 15 Minutes	3.3 Personnel
Within 20 Minutes	1.88 Personnel

General Pages (all shifts) Accumulative totals of off duty personnel responding to a *General Page*

Within 5 Minutes	.33 Personnel
Within 10 Minutes	4.6 Personnel
Within 15 Minutes	7.9 Personnel
Within 20 Minutes	9.8 Personnel

Emergency Record

Year	2012	2013	2014	2015	2016	2017	2018	2019	2020	2021	2022
Fire/Fire Related	613	562	585	614	639	627	689	787	712	724	934
EMS Rescue	1511	1572	1535	1604	1598	1685	1722	1696	1594	1648	1808
Total	2124	2134	2120	2218	2237	2312	2411	2483	2306	2372	2742



Injuries

There has been no recorded fire death in the City of Winona in the past year.

Year	2012	2013	2014	2015	2016	2017	2018	2019	2020	2021	2022
Civilians	1	0	1	1	1	3	1	0	1	0	0
Firefighters	6	11	3	3	3	1	0	8	4	1	10
Total	7	11	4	4	4	4	1	8	5	0	10

Mutual Aid

The Winona Fire Department received mutual aid 2 times in 2022.

Winona Fire Department gave mutual aid 5 times to surrounding communities throughout the year.

Response Time

Winona Fire Department measures response time from the time we get the call until the first unit is on scene.

The Winona Fire Department average emergency response time for the year 2022 was 4:02

Comparable Fire Loss

Year	Fire Alarm Calls	Fire Loss \$ Amount
2012	613	\$1,028,301
2013	562	\$2,068,439
2014	585	\$1,760,381
2015	614	\$1,466,714
2016	639	\$673,000
2017	627	\$675,900
2018	689	\$376,250
2019	787	\$643,000
2020	712	\$393,625
2021	724	\$694,531
2022	934	\$3,539,270



Bureau of Fire Prevention



Assistant Chief Jason Theusch is in charge of fire prevention programs, plan reviews and facility maintenance. Assistant Chief Jason Theusch works with building officials, architects, and designers to ensure that new construction meets the State Fire Code. Additionally, Assistant Chief Jason Theusch reviews all plans for fire protection systems to help ensure compliance with current codes.

Building Inspections

An important part of fire prevention is that of conducting fire inspections. The Winona Fire Department has been updating the way these inspections are tracked and filed for future needs. The Winona Fire Department conducted a total of 308 inspections this year. In both existing properties and new construction, there were 46 plans reviewed for construction projects, automatic suppression systems and fire alarm systems.



Permits, Licenses & Certificates

Last year, the bureau issued a total of 63 permits, licenses and certificates, for the purpose of flammable liquid installations, extinguishing system installations, maintenance of portable extinguishers and extinguishing system and burn authorizations.



Fire Investigations

A total of 16 cause and origin fire investigations were conducted by the bureau, with 16 being determined accidental.

Prevention Through Education

While basing our program on the importance of public relations, our primary objectives continue to emphasize the prevention of fire, public education and the investigation of fire. It is through these objectives that enhanced attitudes and safer properties can be produced, with the occurrence and severity of fires being greatly reduced.

Public Education

Fire education continues to be an important part of the Fire Prevention program. Members of the Winona Fire Department made a guided station tour video and posted it on the Internet; at the time of this writing, the video has more than 3750 views. The Fire Prevention Week Open House was held on October 12th and over 500 people were in attendance between the two stations. The fifth grade Junior Fire Inspector program included approximately 250 students. This program is conducted by firefighters with direction provided by Firefighter/Driver Mark Vieth. Success of the program has been realized by safely evacuating from fire, and increased effective public use of fire extinguishers.





2022 News:

Captain Shawn Kohner began his firefighting career December 1998 with the City of Winona. Shawn was promoted to full-time status in April 2002 and Captain April 2015. Captain Kohner was responsible for hose testing and maintenance. Shawn worked out of the West Station as a blue shift Captain. We all wish Shawn the best in his retirement from the department.



Captain Shaun Bartelson began his firefighting career in January 2007 with the City of Winona. Shaun was promoted to full-time status July 2011 and promoted to Captain February 2022. Captain Bartelson Currently is assigned to the blue shift working out of the West Station.

Firefighter Bailey Jensen began his firefighting career January 2019. Bailey was promoted to Full-time status January 2021. Firefighter Jensen is currently assigned to the blue shift.



Firefighter Andrew Meyer began his firefighting career January 2013. Andrew was promoted to full-time status in February 2022. Firefighter Meyer is currently assigned to the green Shift.

Daily Activities

JANUARY 2022						
Sunday	Monday	Tuesday	Wednesday	Thursday	Friday	Saturday
26	27	28	29	30	31	1 11-Runs Aerial checks Station Maintenance New Years Day
2 12-Runs Station Maintenance Generator Checks- Live	3 5-Runs Monthly/Weekly Checks Send Amy UTV Hours	4 14-Runs 0930- Decon 1000- Paramedic Training 1300- Decon 1300- Paramedic Training Generator-West-Live	5 2-Runs 0930- Station Maintenance **1800-MNFire initiative	6 4-Runs 0800- ACLS 0930- HazMat 1300- Paramedic Training	7 12-Runs 0930- High Angle Rescue 1000- Rescue Carries 1030- Pump Operations 1330- Hand Tools	8 5-Runs SRU/Trailer checks Tanker Station Maintenance 0830- CPR Class
9 8-Runs Station Maintenance Generator Checks	10 5-Runs Weekly/SCBA Checks 1430- High Angle Rescue	11 6-Runs 0930- Size up 0930- Extrication 1300- Communications Generator-West	12 11-Runs 0930- OSHA Required Classes 1300- Hydraulics 1800- Rules,Regs, Memos Pump Operations	13 9-Runs 0930- OSHA Required Classes 1300- OSHA Required Classes	14 12-Runs 1015-Fire Inspections 1300- Fire Inspections	15 3-Runs Aerial checks Station Maintenance
16 11-Runs Station Maintenance Generator Checks	17 8-Runs Weekly/Monitor Checks MLK Day	18 8-Runs 0930-Streets and Locations 0930- Equipment Maint 1300-Streets and Locations 1300-Pump Operations Generator-West	19 10-Runs 0930- OSHA Required Classes 0930- RIT Training 1300- Extrication 1800- OSHA Required Classes- Zoom	20 10-Runs 0930- OSHA Required Classes 1300- OSHA Required Classes	21 9-Runs 0930- Apparatus Maint 1000- Size Up 1330- Hand Tools 1330- High Angle Rescue	22 10-Runs Backup apparatus checks Station Maintenance
23 6-Runs Station Maintenance Generator Checks	24 4-Runs Weekly/Extinguisher Check Eye Wash Stations	25 12-Runs 0930- Confined Space 1430- High Angle Rescue Generator-West	26 6-Runs 0930- Equipment Maint 1400- EMS Regulations	27 8-Runs 0930- Driver's Training 1000- OSHA Required Classes 1300- Confined Space	28 10-Runs 0930- ESO Migration 1030- Mass Casualty 1330- Fire Extinguishers	29 6-Runs Aerial checks Station Maintenance 1230- High Angle Rescue
30 6-Runs Station Maintenance Generator Checks	31 5-Runs Weekly Checks Check tires on other equipment ailers, fans, insulvac, wags Pressure test auto valves 1300- High Angle Rescue					

FEBRUARY 2022

Sunday	Monday	Tuesday	Wednesday	Thursday	Friday	Saturday
30	31	1 7-Runs 0930- Apparatus Maint 1100- Pump Operations 1300- Ground Ladders 1430- Station Maint Generator-West/Live	2 9-Runs 0930- FF Safety *1800- NIMS/ICS/ARMER	3 5-Runs 0930- Paramedic Training 1030- App Mechanical 1300- Station Maint	4 11-Runs 0930- Fire Inspections 1300- Fire Inspections	5 5-Runs SRU/Trailer checks Tanker Station Maintenance
6 0-Runs Station Maintenance Generator Checks- Live	7 8-Runs Monthly/Weekly Checks Send Amy UTV Hours 1400- Fitness and Wellness	8 8-Runs 0930- Pump Ops 1300- High Angle Rescue 1400- Fitness and Wellness 1430- Rescue Carries Generator-West	9 7-Runs 0930- Confined Space 1300- Confined Space 1400-Fitness and Wellness **1800- Confined Space	10 7-Runs 0930- Boat Operations 1030- Cold Water Rescue 1300- Streets and Locations	11 11-Runs 0930-Fire Inspections 1300- Drivers Training 1315- Fire Inspections	12 2-Runs Aerial checks Station Maintenance
13 9-Runs Station Maintenance Generator Checks	14 7-Runs Weekly/SCBA Checks 1400- Drivers Training	15 4-Runs 0930- ESO Training 1300- Streets and Locations 1330- Tactical Medic 1330- Confined Space Generator-West	16 6-Runs 0930- High Angle Rescue 1000- Fire Inspections 1100- Report Writing **1800- Fire Suppression Building Const- Zoom	17 7-Runs 0930- High Angle Rescue 0930- Fire Inspections 1400- ESO Training	18 12-Runs 0930- Fire Inspections 1300- High Angle Rescue 1415- Streets and Locations	19 3-Runs Backup apparatus checks Station Maintenance
20 5-Runs Station Maintenance Generator Checks	21 4-Runs Weekly/Monitor Checks President's Day	22 4-Runs 0930- ESO Training 1300- Forcible Entry 1400- Station Maintenance Generator-West	23 10-Runs 0830-EMS training with WAAS at Winona Health 1030- Equipment Maint	24 8-Runs 0930- Safety 0930- Paramedic Training 1000- Fire Inspections 1300- Decon 1400- Size up	25 8-Runs 0930- ESO Training 1300- ESO Training	26 12-Runs Aerial checks Station Maintenance
27 7-Runs Station Maintenance Generator Checks	28 4-Runs Weekly/Extinguisher Checks Eye Wash Stations Check fires on other equipment (trailers, fans, insulvac, wagon) Pressure test auto valves 1300- Paramedic Training	1	2	3	4	5
6	7					

MARCH 2022

Sunday	Monday	Tuesday	Wednesday	Thursday	Friday	Saturday
27	28	1 9-Runs 0930- ESO implementation 1300- Incident Critiques Generator-West-Live	2 9-Runs 0930- Paramedic Training 1300- Size Up 1800- Lock 6 Tour	3 8-Runs 0930- Paramedic Training 1300- High angle rescue	4 8-Runs 0930- Fire Inspections 1300- Fire Suppression	5 9-Runs SRU/Trailer checks Tanker Station Maintenance
6 5-Runs Station Maintenance Generator Checks- Live	7 6-Runs 0800-Equipment Maint 1300-Equipment Maint	8 5-Runs 0930-Equipment Maint Monthly/Weekly Checks Generator-West	9 4-Runs Monthly/Weekly Checks **1800- Incident Critiques	10 7-Runs 0930-Equipment Maint 1300- Fire Critiques	11 7-Runs 0930- Fire Critiques 1300- Streets and Locations 1300- Hose Loads 1400- Hand Tools	12 6-Runs Aerial checks Station Maintenance
13 6-Runs Station Maintenance Generator Checks	14 7-Runs Weekly/SCBA Checks	15 3-Runs 0800- PALS @ WAAS 0930- Drivers training 0930- Hydraulics 1300- Aerial Operations Generator-West	16 11-Runs 0930-Preplan Drawings **1800-RIT training	17 6-Runs 0930- EMT Training 0930- Aerial Operations 1300- High Angle Rescue	18 9-Runs 0930- Fire Inspections 1600- Extrication	19 8-Runs Backup apparatus checks Station Maintenance
20 8-Runs Station Maintenance Generator Checks	21 7-Runs Weekly/Monitor Checks	22 8-Runs 0930- High Angle Rescue 0930- Drivers Training 1030- Extrication 1300- High Angle Rescue 1400- Tactical Medic	23 6-Runs 0930- Paramedic Training 1300- Building Construction 1400- Forcible Entry	24 7-Runs 0930- Report Writing 0930-Compt Familiarization 1300- Pump Operations	25 4-Runs 0930- Fire Inspections	26 3-Runs Aerial checks Station Maintenance
27 7-Runs Station Maintenance Generator Checks	28 7-Runs Weekly/Extinguisher Checks Eye Wash Stations Check tires on other equipment (trailers, fans, insulvac, wagon) 1300- ISO Inventory 1400-Thermal Imaging	29 3-Runs 0930- Confined Space 1300-Compt Familiarization 1400- Fire Behavior 1430- High Angle Rescue Generator-West	30 4-Runs 0930- ISO Inventory 1000- Fitness and Wellness 1300- Apparatus Maint	31 6-Runs 0930- Fitness and Wellness 1000- ISO Inventory 1300- Pump Testing 1400- Streets and Locations	1	2
3	4					

APRIL 2022						
Sunday	Monday	Tuesday	Wednesday	Thursday	Friday	Saturday
27	28	29	30	31	1 1030- Fire Inspections	2 SRU/Trailer checks Tanker Station Maintenance
3 12-Runs Station Maintenance Generator Checks- Live	4 4-Runs Monthly/Weekly Checks Send Amy UTV Hours	5 6-Runs 0930- EMT Training 1000- Fitness and Wellness 1100- Streets and Locations 1315- High Angle Rescue Generator-West-Live	6 8-Runs 0930- Confined Space ***1800- Confined Space	7 5-Runs 0930- Streets and locations 1300- Pump Operations 1300- Officer Training	8 4-Runs 0945- Fire Inspections 1300- Fire Inspections	9 11-Runs Aerial checks Station Maintenance 1100- Public Service
10 10-Runs Station Maintenance Generator Checks	11 7-Runs Weekly/SCBA Checks 1400- High Angle Rescue	12 4-Runs 0930- Boat Operations 1315- Fire Inspections Generator-West	13 8-Runs 0930- High Angle Rescue *1800- Water Supply-Water Department Tour	14 6-Runs 0930- Confined Space 1300- Confined Space	15 5-Runs 1015- Fire Inspections 1300- Search and Rescue Good Friday	16 6-Runs Backup apparatus checks Station Maintenance
17 4-Runs Station Maintenance Generator Checks	18 6-Runs Weekly/Monitor Checks	19 5-Runs 0930- Aerial Operations 1300- Forcible Entry 1400- Tactical Medic Generator-West	20 8-Runs 0930- Paramedic Training at WAAS *1800- High Angle Rescue training at WSU	21 8-Runs 0930- Forcible Entry 1030- Tanker Operations 1300- Boat Operations	22 7-Runs 0930- Paramedic Training at WAAS 1315- Fire Inspections	23 6-Runs Aerial checks Station Maintenance
24 9-Runs Station Maintenance Generator Checks	25 9-Runs Weekly/Extinguisher Check Eye Wash Stations Check tires on other equipment ailers, fans, insulvac, wags Pressure test auto valves 1300-Fire Suppression- Solar/ Li-ion Batteries	26 6-Runs 0930-Forcible Entry 1300- Ground Ladders Generator-West	27 4-Runs 0930-Fire Suppression- Solar/ Li-ion Batteries 1300- RIT Training	28 5-Runs 0930-Paramedic Training 1300- RIT Training	29 12-Runs 1030- Fire Inspections 1300- Fire Inspections 1400- Hose Training	30 3-Runs SRU/Trailer checks Station Maintenance
1	2					

MAY 2022

Sunday	Monday	Tuesday	Wednesday	Thursday	Friday	Saturday
1 12-Runs Station Maintenance Generator Checks- Live	2 6-Runs Monthly/Weekly Checks 1300- High Angle Rescue	3 12-Runs 0930- Extrication 1300- Ropes and Knots 1400- Extrication Generator-West-Live	4 6-Runs 0930- High Angle Rescue 1300- Auto Extrication 1400- Station Maintenance ***1800- Garvin Heights cleanup	5 8-Runs 0930- Hazmat Tech 1030- JFIP 1300- Boat Operations	6 6-Runs 0930- Fire Inspections 1300- Fire Inspections	7 7-Runs Aerial checks Station Maintenance
8 8-Runs Station Maintenance Generator Checks	9 8-Runs 0800-Mayo Rural Trauma Team Dev. Course	10 6-Runs 0900- Chlorine Training 1130- JFIP 1300-SCBAWeekly Checks Generator-West	11 6-Runs 0930- Paramedic Training at WAAS 1300- Public Service ***1800- LDH Hose Testing	12 9-Runs 0830- Hose Testing 0900- JFIP 1300- Hose Testing	13 9-Runs 0930- Equipment Maint 1300- Apparatus Maint	14 8-Runs Backup apparatus checks Station Maintenance
15 3-Runs Station Maintenance Generator Checks 1130- Hose Testing	16 7-Runs Weekly/Monitor Checks 1300- Hose Testing	17 8-Runs 0830-EMS training with WAAS at Winona Health 1230- Fitness and Wellness 1800- Auto Extrication with Wilson FD Generator-West	18 8-Runs 0930- Fitness and Wellness ***1800- Hose Testing	19 12-Runs 0830- Hose Testing 1030- Fitness and Wellness 1415- Monitor Calibration	20 9-Runs 0930- Fire Inspection 1300- Hose Testing 1400- Public Service	21 6-Runs Aerial checks Station Maintenance 0930-Public Education 0930- Hose Testing
22 9-Runs Station Maintenance Generator Checks	23 6-Runs Weekly/Extinguisher Check Eye Wash Stations 0900- JFIP 1300- Station Maintenance	24 15-Runs 0930- Drivers Training 1330- Pump Operations 1400- Tactical Medic Generator-West	25 5-Runs 0800- JFIP 0930- Hose 1300-Apparatus Mechanical	26 7-Runs 0930-Drivers training 1000- Station Tour 1300-Pump Operations	27 10-Runs 0930-Fire Inspections 1000- Station Tour 1300-Incident Command System	28 9-Runs SRU/Trailer checks Tanker Station Maintenance
29 8-Runs Station Maintenance Generator Checks	30 8-Runs Weekly Checks Check tires on other equipment ailers, fans, insulvac, wags Pressure test auto valves Memorial Day	31 9-Runs 0930- High Angle Rescue 1300- High Angle Rescue Generator-West	1	2	3	4
5	6					

JUNE 2022

Sunday	Monday	Tuesday	Wednesday	Thursday	Friday	Saturday
29	30 Memorial Day	31	1 4-Runs 0930- Hose Testing	2 8-Runs 0930- Streets and Location 0930- Apparatus Maint 1300- Boat Operations	3 11-Runs 1000- Station Tour 1000- Hydraulics 1000- Truck Visit 1100- Fire Inspections	4 4-Runs Aerial checks Station Maintenance
5 5-Runs Station Maintenance Generator Checks- Live	6 10-Runs Monthly/Weekly Checks	7 2-Runs 0930- RIT Training 1330- Pump Operations Generator-West-Live	8 11-Runs 0930- Boat Operations 1100- Truck Visit **1800- Boat Ops w/ Rollingstone and D/R	9 3-Runs 0930- Fire Streams 1300- Pump Operations	10 10-Runs 0930- Fire Inspections 1030- Hose 1300- Fire Inspections	11 7-Runs Backup apparatus checks Station Maintenance 1200- Drivers Training
12 9-Runs Station Maintenance Generator Checks	13 10-Runs Weekly/SCBA Checks	14 4-Runs 0930- Tanker Operations 0930- Swiftwater Rescue 1300- Streets and Locations Generator-West	15 3-Runs 0930-Fire Inspections 0945-Truck Visit 1300- Fire Streams 1800- Fire Inspections Solar Panel Fires Steamboat Days	16 13-Runs 1000- Pump Operations Steamboat Days	17 8-Runs 0900-Kidde Parade 0945- Fire Streams 1300- Fire Inspections 1320- Station Tour Steamboat Days	18 5-Runs Aerial checks Station Maintenance Steamboat Days
19 6-Runs Station Maintenance Generator Checks 1200- Public Service 2200- Public Service Steamboat Days	20 8-Runs Weekly/Monitor Checks 1000- Station Tour	21 4-Runs 1000- Boat Operations 1400- Tactical Medic 1400- Hose Generator-West	22 6-Runs 0930- Boat Operations 1300- Boat Operations	23 11-Runs 0930- Trench Rescue 1200- Trench Rescue- Hoffman Construction	24 5-Runs 1000-Fire Inspections 1315- Fire Inspections	25 5-Runs SRU/Trailer checks Tanker Station Maintenance
26 3-Runs Station Maintenance Generator Checks	27 9-Runs Weekly/Extinguisher Check Eye Wash Stations Check tires on other equipment (trailers, fans, insulvac, wagon) Pressure test auto valves 1400- Hydraulics	28 6-Runs 1000- Station Tour 1100- Boat Operations 1300- Boat Operations Generator-West	29 7-Runs 0930- Tanker Operations 1330- Aerial Operations	30 4-Runs 0930- Pump Operations 1315- Size Up	1	2

JULY 2022

Sunday	Monday	Tuesday	Wednesday	Thursday	Friday	Saturday
26	27	28	29	30	1 9 -Runs 0930- Fire Inspections 1300- Fire Inspections 1430- Compt Familiarization	2 9 -Runs Aerial checks Station Maintenance
3 10 -Runs Station Maintenance Generator Checks- Live	4 12 -Runs Monthly/Weekly Checks Send Amy UTV Hours Independence Day	5 6 -Runs 0930- Hose 1300- RIT Training Generator-West-Live	6 5 -Runs 0930- Streets and Locations ***1800- Tanker Drill	7 10 -Runs 0930-RIT Training 1300-Pump Operations	8 6 -Runs 1000- Station Tour 1100- Fire Inspections	9 7 -Runs Backup apparatus checks Station Maintenance
10 8 -Runs Station Maintenance Generator Checks	11 10 -Runs Weekly/SCBA Checks	12 2 -Runs 0930- High Angle Rescue 1300- High Angle Rescue Generator-West	13 8 -Runs 0930- Paramedic Training 1000- Hazmat ***1800 Boom Deployment Boat Operation	14 6 -Runs 0930- High Angle Rescue 1300- High Angle Rescue	15 9 -Runs 0900- Truck Visit 0930- Fire Inspections 1300- Fire Inspections	16 9 -Runs Aerial checks Station Maintenance
17 9 -Runs Station Maintenance Generator Checks	18 9 -Runs Weekly/Monitor Checks 1300- EMT Training 1330- Fire Suppression	19 10 -Runs 0930- Aerial Operations 1300- Drivers Training 1400- Tactical Medic Generator-West	20 9 -Runs 0930- Fire Behavior 1300- Standpipe Operations 1800- Helicopter Landing & Safety- Ridgeway	21 8 -Runs 0930- Trench Rescue 1300- Trench Rescue	22 4 -Runs 0930- Fire Inspections 1300- Fire Inspections	23 6 -Runs SRU/Trailer checks Tanker Station Maintenance
24 10 -Runs Station Maintenance Generator Checks	25 7 -Runs Weekly/Extinguisher Checks Eye Wash Stations Check tires on other equipment (trailers, fans, insulvac, wagon) Pressure test auto valves	26 11 -Runs 0930- Officer Training 1030- Size Up 1300- Fire Suppression 1800- Public Service Generator-West	27 6 -Runs 0930- Size Up 1015- Officer Training 1300-Forcible Entry	28 2 -Runs 1300- Aerial Operations	29 16 -Runs 0930- Boat Operations 1300- Fire Inspections	30 10 -Runs Aerial checks Station Maintenance
31 3 -Runs Station Maintenance Generator Checks	1					

AUGUST 2022

Sunday	Monday	Tuesday	Wednesday	Thursday	Friday	Saturday
31	1 9- Runs Monthly/Weekly Checks	2 14- Runs 0930- High Angle Rescue 1300- Paramedic Training Generator-West/Live	3 10- Runs 0930- Paramedic Training *1800-Building Construction Drivers training EMT Training	4 13- Runs 0930- Trench rescue 1300- Ground ladders 1600-Public Service	5 4- Runs 0930- Public Safety Education 1100- Public Service	6 4- Runs Backup apparatus checks Station Maintenance
7 7- Runs Station Maintenance Generator Checks- Live 0930- Air Tests	8 11- Runs Weekly/SCBA Checks	9 7- Runs 0930- Paramedic Training 0930- Public Safety Education Generator-West	10 5- Runs 0930- High Angle Rescue **1800- High Angle Rescue	11 3- Runs 0900- Aerial Operations 1300- High Angle Rescue 1300- Fire Behavior	12 8- Runs 0930-Fire Inspections 1300- Fire Inspections	13 3- Runs Aerial checks Station Maintenance
14 7- Runs Station Maintenance Generator Checks	15 12- Runs Weekly/Monitor Checks 0815- Officers Meeting 1530- Truck Visit	16 6- Runs 0945- Rules, Regs, Memos 1300- Compt Familiarization 1415- Hose Generator-West	17 5- Runs 0930- Officer Training 1030- Hose **1800-Swift Water Rescue	18 4- Runs 0930-SCBA 1300- Paramedic Training	19 5- Runs 0930- High Angle Rescue 1300- High Angle Rescue	20 3- Runs SRU/Trailer checks Tanker Station Maintenance 1200- Truck Visit
21 7- Runs Station Maintenance Generator Checks 1230- Elevator Operations	22 8- Runs Weekly/Extinguisher Checks Eye Wash Stations 1300- Preplan Drawings	23 7- Runs 0930- Ropes and Knots 1300- High Angle Rescue 1400- Tactical Medic Generator-West	24 4- Runs 1030- Pump Operations 1030- Apparatus Mechanical 1300- Forcible Entry 1530-Public Service	25 4- Runs 0930- Streets and Locations 1000- Management Training 1330- Confined Space	26 4- Runs 0945- Fire Inspections 1300- Fire Inspections	27 9- Runs Aerial checks Station Maintenance
28 3- Runs Station Maintenance Generator Checks	29 9- Runs Weekly Checks Check tires on other equipment 1300- Pump Operations	30 12- Runs 0930- SCBA 1400- Forcible Entry Generator-West	31 8- Runs 0930- High Angle Rescue 1300- Rescue Carries	1	2	3
4	5 Labor Day					

SEPTEMBER 2022

Sunday	Monday	Tuesday	Wednesday	Thursday	Friday	Saturday
28	29	30	31	1 6- Runs 0930- Incident Critique 1045- SCBA 1430- Hazmat	2 10- Runs 0930- Fire Inspections 1300- Fire Inspections	3 13- Runs Backup apparatus checks Station Maintenance
4 6- Runs Station Maintenance Generator Checks- Live	5 3- Runs Monthly/Weekly Checks Labor Day	6 12- Runs 0930- Swiftwater Rescue 1700- Incident Critique Generator-West-Live	7 12- Runs 0930- Incident Critique 1300- Swiftwater Rescue *1800- Swiftwater Rescue at the Aquatic Center	8 4- Runs 0930- High Angle Rescue 1300- Swiftwater Rescue at the Aquatic Center	9 9- Runs 0945- High Angle Rescue with Tree Crew 1330- Size Up 1330-Search & Rescue	10 4- Runs Aerial checks Station Maintenance
11 8- Runs Station Maintenance Generator Checks	12 14- Runs Weekly/SCBA Checks	13 4- Runs 0930- Trench Rescue 1300- PPE Generator-West	14 8- Runs 0945 Paramedic Training with WAAS ***1800- SCBA/RIT	15 10- Runs 0945 Paramedic Training with WAAS 1030- PPE 1315- Confined Space Familiarization	16 11- Runs 0945 Paramedic Training with WAAS 1030- Hose 1300- Public Safety Education 1300- Equipment Maint.	17 8- Runs SRU/Trailer checks Tanker Station Maintenance 1000- Truck Visit 1500- Truck Visit
18 7- Runs Station Maintenance Generator Checks 1400- Streets and Locations	19 6- Runs Weekly/Monitor Checks	20 5- Runs 0830-EMS training with WAAS at Winona Health 0800- Truck Visit Generator-West	21 8- Runs 0800- ABLs at WH 1000- Truck Committee Meeting ***1800-ASAP Training	22 12- Runs 1000- Fire Inspection	23 11- Runs 0930-Fire Inspections 1330- German Police Tour Central Station	24 8- Runs Aerial checks Station Maintenance 1030- Truck Visit
25 9- Runs Station Maintenance Generator Checks 1030-Apparatus Mech	26 10- Runs Weekly/Extinguisher Checks Eye Wash Stations check tires on other equipment trailers, fans, insulvac, wago	27 11- Runs 1000- Streets and Locations 1100- Fitness and Wellness Generator-West	28 20- Runs 0800- Ladder Testing 1600- Physical Agility Test	29 7- Runs 0800- Ladder Testing 0930- Streets and Location	30 10- Runs 0800- Ladder Testing 0930- High Angle Rescue 1400- Streets and Location	1
2	3					

OCTOBER 2022

Sunday	Monday	Tuesday	Wednesday	Thursday	Friday	Saturday
25	26	27	28	29	30	1 5-Runs 0800- Physical Agility Test Backup apparatus checks Station Maintenance
2 3-Runs Station Maintenance Generator Checks- Live 1000- Public Service	3 5-Runs Monthly/Weekly Checks 0930-JFIP 1300-JFIP 1400-Foam Training	4 7-Runs 0930-Fire Extinguisher Demo 0945- Truck Visit 1230-Pump Testing Generator-West-Live	5 6-Runs 0945- Truck Visit 1030- JFIP **1800- Incident Critique EMS Training	6 7-Runs 0900-Pump Testing 1300- Truck Visit 1400- Drivers Training	7 4-Runs 0930- Pump Testing 1400- Incident Critiques 1715- Public Service	8 10-Runs Aerial checks Station Maintenance 0830- Public Service
9 9-Runs Station Maintenance Generator Checks	10 6-Runs Weekly/SCBA Checks 0845-JFIP 0930- Truck Visit 1230-JFIP Columbus Day	11 8-Runs 1000- Flu Vaccinations 1300- Pump Testing Generator-West	12 5-Runs 1000- Flu Vaccinations 1300-JFIP ***1800-Open House	13 9-Runs 1000- Flu Vaccinations 1400- Truck Visit	14 4-Runs 0930- Truck Visit 0930-Paramedic Training 1300- Truck Visit 1300-Fire Codes	15 8-Runs SRU/Trailer checks Tanker Station Maintenance
16 8-Runs Station Maintenance Generator Checks	17 8-Runs Weekly/Monitor Checks 0830-Station Tour 1145- Station Tour	18 9-Runs 1000- Truck Visit 1000- High Angle Rescue 1300- Ground Ladders Generator-West	19 13-Runs 0930- Confined Space 1000-Truck Visit ***1800- Confined Space Drill WSU	20 11-Runs 1300- Driver Training	21 6-Runs 0830-Fire Inspections 1300- Pump Testing	22 18-Runs Aerial checks Station Maintenance 0945- Public Service
23 5-Runs Station Maintenance Generator Checks	24 11-Runs WeeklyExtinguisher Checks Eye Wash Stations 0800-Driver Test- Meyer 1300- Fire Critiques	25 8-Runs 0945- Public Service 1100- Incident Critique 1300- Aerial Operations 1400- Tactical Medic Generator-West	26 10-Runs 0930-Fitness and Wellness 1030-Apparatus Mechanical 1300- Pump Testing	27 6-Runs 0930-Fitness and Wellness 1300-Pump Testing 1600- Truck Visit	28 12-Runs 0900-JFIP 0930-Fitness and Wellness 1300-Fire Inspections 1400-JFIP 1400-Fire Inspections	29 10-Runs Backup apparatus checks Station Maintenance
30 1-Run Station Maintenance Generator Checks	31 9-Runs Weekly Checks check tires on other equipment trailers, fans, insulvac, wago Pressure test auto valves 1300- High Angle Rescue					

NOVEMBER 2022

Sunday	Monday	Tuesday	Wednesday	Thursday	Friday	Saturday
30	31	1 11-Runs 0930- Station Maintenance 1100- PPE 1330- Open Enrollment Generator-West-Live	2 5-Runs 0930- High Angle Rescue 1330- Open Enrollment ***1800- PPE Structural Collapse	3 5-Runs 0930- Station Maintenance 1100- PPE 1330- Open Enrollment	4 6-Runs 0930- Fire Inspections 1300- Fire Inspections 1800- Public Service	5 10-Runs Aerial checks Station Maintenance
6 7-Runs Station Maintenance Generator Checks- Live	7 10-Runs Monthly/Weekly Checks Send Amy UTV Hours Aerial Checks	8 10-Runs 0930- Communications 1030-Apparatus Mechanical 1300- Aerial Operations 1400- Ground Ladders Generator-West	9 4-Runs 0930- Communications 1030- Flu Vaccinations **1800- Solar Panel Tour and Inspection	10 9-Runs 0930- High Angle Rescue 1300-Paramedic Training	11 9-Runs 1045- Public Service 1600- Public Service Veterans Day	12 2-Runs SRU/Trailer checks Tanker Station Maintenance
13 6-Runs Station Maintenance Generator Checks	14 9-Runs Weekly/SCBA Checks 1300- Hose	15 9-Runs 0930- EMS Regulations 1300- RIT Training Generator-West	16 5-Runs 0930- Communications for Red Shift 1030- Driver's Training ***1800- Auto Extrication	17 7-Runs 0930- JFIP 1300- Paramedic Training 1830- Public Service	18 4-Runs 0930-Fire Inspections 1300-Fire Inspections	19 5-Runs Aerial checks Station Maintenance
20 11-Runs Station Maintenance Generator Checks	21 6-Runs Weekly/Monitor Checks	22 12-Runs 1030- Apparatus Mechanical 1300- Building Construction 1400- Public Service Generator-West	23 9-Runs 1030- Hose 1300- Cold Water Rescue	24 8-Runs Thanksgiving	25 8-Runs 0930-Fire Inspections 1045- Cold Water Rescue	26 0-Runs Backup apparatus checks Station Maintenance
27 6-Runs Station Maintenance Generator Checks	28 10-Runs Weekly/Extinguisher Checks Eye Wash Stations check tires on other equipment trailers, fans, insulvac, wago Pressure test auto valves 1300- Incident Critique 1400- Public Service	29 13-Runs 0900- Equipment Maintenance 1300- Cold Water Rescue 1400- Tactical Medic 1400-ERT Generator-West	30 11-Runs 1030- Auto Extrication 1400- Auto Extrication	1	2	3
4	5					

DECEMBER 2022

Sunday	Monday	Tuesday	Wednesday	Thursday	Friday	Saturday
27	28	29	30	1 0930-Equipment Maint 1300-Apparatus Maint 1300-Streets and Locations	2 16-Runs 1030- Forcible Entry 1300- Fire Inspections 1300- Compressor Maint	3 6-Runs Aerial checks Station Maintenance
4 8-Runs Station Maintenance Generator Checks- Live	5 4-Runs Monthly/Weekly Checks Send Amy UTV Hours	6 5-Runs 0930- Paramedic Training at WH Sim Lab 1200- Fitness and Wellne 1330- Ropes and Knots 1400-Apparatus Mech Generator-West-Live	7 9-Runs 0800- Annual Physicals 1000- Fitness and Wellne 1300-Cold Water Rescue 1730- New PT Staff Physicals and Annual Physicals	8 8-Runs 0800- Annual Physicals 1000- Incident Critique 1300- Apparatus Mech 1300- Aerial Operations	9 6-Runs 0800- Annual Physicals 1300- Aerial Operations	10 6-Runs SRU/Trailer checks Tanker Station Maintenance 1000-Driver's Training
11 8-Runs Station Maintenance Generator Checks	12 13-Runs Weekly/SCBA Checks	13 3-Runs 0930-Air Monitor Training 1300- Ventilation Generator-West	14 5-Runs 1000- Fire Warden Class **1800-Cold Water Rescue	15 12-Runs 0930- Drivers training 0930-Apparatus Mech 1300- Fire Behavior	16 4-Runs 0930- Detector Installation 1300- SCBA	17 9-Runs Aerial checks Station Maintenance
18 9-Runs Station Maintenance Generator Checks	19 5-Runs Weekly/Monitor Checks 300- Streets and Location 1700- Public Service	20 4-Runs 1000- Streets and Location 1100- Fitness and Wellne 1315- Fire Inspection 1430- Size Up Generator-West	21 9-Runs 0930-Air Monitor Training 1150- Detector Installation **1800- FF Auman presentation	22 9-Runs 0930-Streets and Location 0930- Paramedic Training 1000-Compt Familiarizato	23 7-Runs 0915-Final Inspection Exchange Bldg	24 8-Runs Backup apparatus checks Station Maintenance Christmas Eve
25 6-Runs Station Maintenance Generator Checks Christmas	26 9-Runs Weekly/Extinguisher Check Eye Wash Stations Check tires on other equipm ailers, fans, insulvac, wags Pressure test auto valves	27 6-Runs 0930- Equipment Maint 1300- Elevator Operations 1400- Tactical Medic Generator-West	28 5-Runs 0930- Report Writing 1300- FF Auman presentation	29 13-Runs 0930- Size Up 0930- Equipment Maint 1300-FF Auman presentation	30 8-Runs 0930- Paramedic Training 1300- Paramedic Training	31 6-Runs Aerial checks Station Maintenance
1	2					