

Winona Fire Department



2023 Annual Report



Winona Fire Department

Serving Since November 1, 1889

Headquarters – 451 East 3rd Street

Winona, MN 55987-3912

Phone: 507-457-8266

Fax: 507-452-0345

<https://www.cityofwinona.com/201/Fire-Department>



Winona Fire Department 2023 Annual Report

Mayor, City Council, City Manager,

I am pleased to share with you the Winona Fire Department 2023 annual report as a reflection of the dedication, professionalism, and commitment to the department's vision of reducing and mitigating fire, rescue, and medical events in the community we serve.

The Winona Fire Department responded to 2733 calls for assistance in 2023. Rescue and emergency medical calls account for approximately 70% (1936) of our overall call volume. With an aging population, projections point to continued increase in emergency medical response. With current staffing and paramedic licensure the department will continue to provide advanced life support (ALS) engine response from both stations. Additionally, when staffing allows, we will continue to run an ALS rescue vehicle to expand our ability to handle the larger EMS call volume.

The Winona Fire Department responded to 797 (30%) fire related calls in 2023. The department extinguished 65 fires of various types during the year; all but 14 (general pages) were handled by on-duty staff. For 2023 the City of Winona continues to hold an Insurance Service Office (ISO) Public Protection Classification (PPC) rating of 2. Only 18 other cities in the State of Minnesota enjoy this prestigious classification.

Inside this report you will find not only these statistics, but also some of our accomplishments, training, and fire prevention activities from the past year. Our accomplishments are possible because of the continued support for public safety by the city council and because of the dedication and pride all of us share in our fire department. You are encouraged to contact this office for any further explanation or to tour our facilities.

Respectfully Submitted,

Joel Corcoran, Fire Chief

Code of Ethics

The Winona Fire Department is dedicated to the protection and preservation of life and property against fire, emergency medical conditions and other emergencies coming under its jurisdiction.

Towards this endeavor, members of the department strive to live according to ethical principles consistent with professional conduct and shall:

Maintain the highest standards of personal integrity, be honest and straightforward in dealing with others and avoid conflicts of interest.

Place the public's safety and the safety of firefighters above all concerns; be supportive of training and education which promote safe living and working conditions.

Be mindful of the needs of others and assist them freely in developing their skills, abilities, and talents to the fullest extent; offer encouragement to those trying to better themselves, the Department, and the Fire Service.

Be Supportive of the Minnesota State Fire Code, and the fire protection needs of the City of Winona.

Foster creativity and be open to consider innovations that may better enable the performance of the duties and responsibilities of the Winona Fire Department.



Mission Statement

The primary mission of the Winona Fire Department is to provide a range of programs designed to protect the lives and property of the inhabitants of the City of Winona from the adverse effects of fires, sudden medical emergencies, or exposure to dangerous conditions created by either man or nature.

The department will continue to provide for the expanding needs of the community beyond the extinguishment of fires.

Table of Contents

<u>Page</u>	<u>Section</u>
1	Jurisdiction Protected
1	City of Winona Representatives
2	Organizational Statement
3	Organizational Flow Chart
4	Full Time Roster
5	Training
8	Part Time Program
9	Functions at the Workplace
9	Performance of Duties
9	Emergency Response
10	2023 Statistics
10	Overlapping Calls
11	Pages
11	Emergency Record
12	Injuries
12	Mutual Aid
12	Response Time
12	Comparable Fire Loss
13	Bureau of Fire Prevention
13	Building Inspections
13	Permits, Licenses & Certificates
13	Fire Investigations
14	Prevention through Education
14	Public Education
15	2023 News
17	New Equipment
18	Daily Activities

Jurisdiction Protected

The Winona Fire Department protects: 24 sq. miles in the city
25,842 people in the city

Within the Winona city limits there is one airport, ten assisted living / nursing homes, one hospital, two universities with associated off campus student dwelling units and one technical college. The Winona Fire Department protects 18.84 sq. miles of land area and 5.29 sq. miles of water area. Winona Fire Department also has mutual aid contracts with other departments in the surrounding area.



City of Winona

Mayor: Scott D. Sherman

City Manager: Chad Ubl

Steve Young	1 st Ward
Jeff Hyma	2 nd Ward
Pamela Eyden	3 rd Ward
George Borzyskowski	4 th Ward
Jerome Christenson	At Large
Aaron Repinski	At Large

Winona Fire Department
Organizational Statement

Per OSHA 1910.156 and NFPA 1500 Chapter 2 (1992 Edition)

John C. ...

Fire Chief

January 1, 2024

Date

Organizational Chart

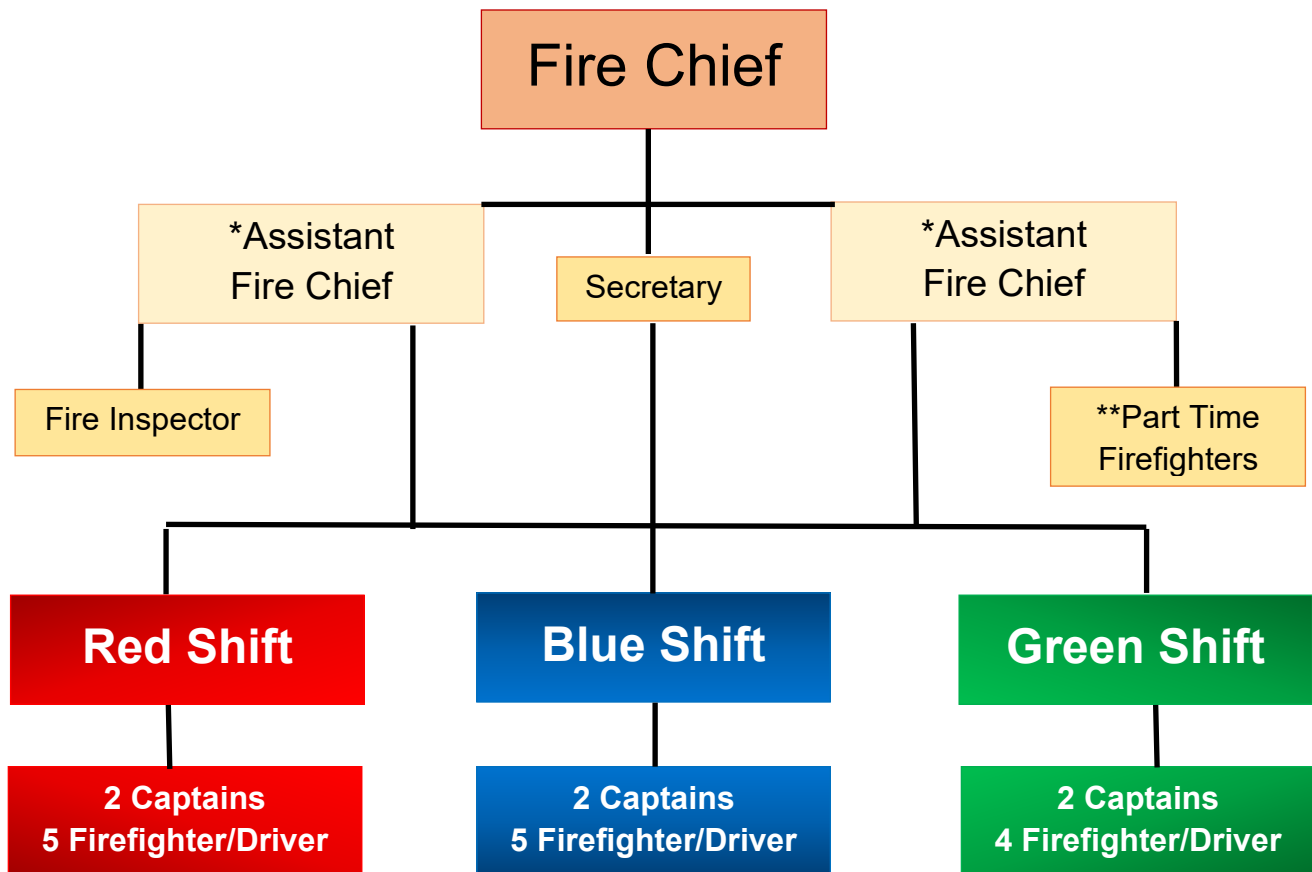
The organizational chart of the Winona Fire Department, as of January 1, 2023, is attached to this statement. As of that date, the department is authorized:

- 1 Fire Chief
- 2 Assistant Chiefs
- 6 Captains
- 14 Firefighter / Drivers
- 17 Active Part-time Firefighters

The Fire Chief and Two Assistant Chiefs work a 40-hour work week. One Assistant Chief is in charge of fire prevention and public education; and the other Assistant Chief is in charge of training and the part time program. Both Assistant Chiefs are of equal rank and answer directly to the Fire Chief. The 6 Captains and 14 career Firefighter/Drivers are normally assigned to 24-hour shifts averaging 56 hours per week. The 20 career personnel that are assigned to 24-hour shifts are divided into three shifts Red, Blue and Green. Each shift has two officers (Captains) assigned to it plus 4 or 5 Firefighter/Drivers. The Captain at the Central Station is the "Company Officer". The part time firefighters are paid on call.



Winona Fire Department



*One Assistant Chief is primarily responsible for fire prevention, public education, investigations, etc.

*One Assistant Chief is primarily responsible for training, part time program, hazardous materials, etc.

**There is a minimum of 15 and a maximum of 30 part time firefighters authorized by the City Council. The numbers will vary.

The Fire Inspector and Secretary are both part time positions.

2023 Full Time Roster

40 Hour Per Week Personnel		Anniversary Date
Fire Chief, Joel Corcoran		4-19-02
Assistant Fire Chief, Jason Theusch		10-14-99
Assistant Fire Chief, Brandon Czaplewski		4-29-12
Captains		
Brandon Luehmann		11-5-05
Matt Lisowski		12-23-05
Kirk Skogebo		3-26-09
Matt Yackel		12-15-10
Shaun Bartelson		1-2-11
Brad Bartelson		5-6-17
Firefighter / Drivers / Paramedics		
Mark Allred		12-24-04
Nathan Speltz		6-21-11
Derick Ritter		9-25-11
Pete Brueggen		4-27-13
Mike Allred		5-11-14
Tom Connell		5-21-16
Tim Carlson		1-1-18
Matt Brown		1-3-17
Trevor Multhaup		8-19-23
Firefighter / Driver		
Mark Vieth		5-23-07
Charles Mayer		4-13-14
Ryan Geiger		7-14-15
Bailey Jensen		1-3-19
Andrew Meyer		2-21-22
Secretary		
Crystal Srock	(20 Hours/Week)	8-13-12
Retired		
Chief Curt Bittle		8-18-1992 to 10-31-2023

Training

Assistant Chief Brandon Czaplewski is the assistant chief in charge of training. Assistant Chief Brandon Czaplewski plans, schedules and monitors all training whether it is in house training or outside training at other facilities. Fire Department training is divided into several general areas including firefighting, emergency medical services, hazardous material, and rescue. It is recognized that much of the training overlaps; however, these are general guidelines for record keeping purposes. Assistant Chief Brandon Czaplewski also maintains the training records of all the Winona Fire Department Personnel by keeping all the records and certificates in their own personal binders. These binders are available for inspection by any regulatory agency or the individual.

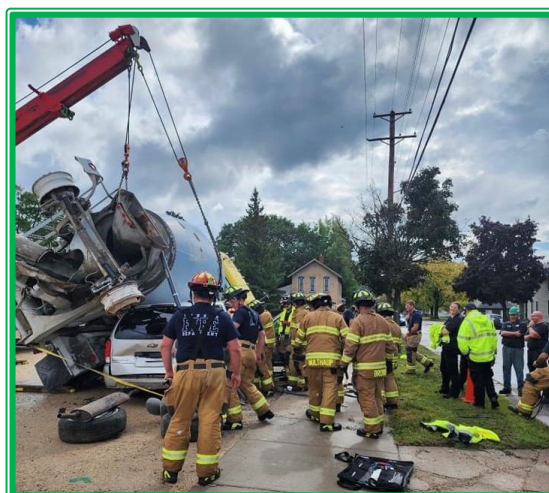
Prior to becoming a career firefighter, an individual must successfully complete Basic Firefighting training and be a certified Firefighter I by the State Fire Service Certification Board and be Certified as an Emergency Medical Technician by EMS Regulatory Board.



Live burn training with the firefighter I class. this is a Riverland Technical College course taught by Winona Firefighters.



Captain Lisowski leads an auto extrication class with our mutual aid partners and Borkowski Towing



Assistant Chief Brandon Czaplewski is also in charge of the part time firefighters. Part time personnel usually train on the first three Wednesday nights of each month for a total of three hours each night. They are also given opportunities to attend training outside of the department. In addition to regular training, part time personnel are encouraged to participate in the “ride along” program. To participate in the ride along program the part time employee must have prior approval of the Assistant Chief In charge of training. Other requirements are Successful completion of Basic Firefighter Training Program (to be allowed to combat and extinguish fires) and certified as a “Emergency Medical Responder” or “Emergency Medical Technician” (to be allowed to assist with emergency medical calls).

A part time ride along can be conducted between the hours of 0800 and 2200. This is an opportunity for the part time fire fighters to become familiar with the apparatus and daily operations at the stations and to gain experience.

To the right is the
2023
Winona Fire Department
Recruit Class



To the left is the
2023 Riverland Technical College
Firefighter I class
along with
the instructors for
their live burn training.



Lock and Dam safety training with the USACE and mutual aid partners.



Hazmat Technician Class led by instructors from STARS training.

Part Time Program

The part time program was started in June of 1992. Part time firefighters go through the same hiring process as the full-time city employees, including a written test, agility test and interview. They are paid an hourly rate based upon their level of certification.

Below is a listing of the various certification levels of part time personnel.

Last Name	First Name	Step	Certification Level	EMS / Paramedic	Haz/Mat
Auman	Mitchel	C	II	EMT	OPER
Brand	Reo	C	II	EMT	OPER
Butenhoff	Phil	C	II	EMT	OPER
Connell	Sam	C	II	EMT	OPER
Cottrell	Daniel	C	II	EMR	OPER
Dahlby	Joel	B	II		OPER
Douglas	Paul	C	II	EMR	TECH
Hanson	Karl	C	II	EMT	OPER
Harris	Jeffery	C	II	EMT	OPER
Merchlewitz	Rodney	C	II	EMR	TECH
Passehl	Craig	C	II	EMT	TECH
Pham	Andy	C	II	EMT	OPER
Priem	Brad	D	II	PARAMEDIC	OPER
Reinardy	Cole	C	II	EMT	OPER
Romine	Wesley	C	II	EMT	OPER
Thesing	Amanda	C	II	EMT	OPER
Varner	Tyrell	C	II	EMT	OPER



Functions at the Workplace

Career and part time personnel maintain fire department facilities, apparatus, vehicles, and equipment. Major repairs beyond the expertise and time constraints of personnel, are performed at the City of Winona Central Garage, or contracted out.

Performance of Duties

All personnel are expected to perform the arduous tasks of an interior structural firefighter. Additionally, members are expected to perform emergency medical services, rescue operations and certain corrective actions at hazardous material incidents.

It is the intention of the Winona Fire Department to ensure that its members are properly trained and equipped to perform the tasks

expected of them, to provide for their safety, and to be in compliance with all regulatory agencies. No member of the department is ever expected to perform duties beyond the scope and intention of their training, personal protective equipment and emergency response equipment.



Emergency Response

Currently the Winona Fire Department maintains a minimum of 5 Personnel on duty, 24 hours per day, every day of the year. The 5 personnel are divided between the two stations and come together for training, apparatus maintenance, and certain social events. A fully staffed shift comprises of 7 firefighters. When all 7 are on-duty we staff a light rescue vehicle that can respond to medical calls. This decreases wear and tear on

our fire engines and increases our ability to handle overlapping calls.



Shift Captains are authorized to “page” off duty and part time personnel whenever the need is recognized and shall page all personnel for all confirmed structure fires.

2023 Statistics

According to the National Fire Protection Agency (NFPA), a Structure Fire is defined as follows: “any fire that requires the use of a 1 ½ inches or larger fire attack hose line and that also requires the use of self-contained breathing apparatus for members entering the hazardous area”.

Recent history of this type of fire is:

2013	2014	2015	2016	2017	2018	2019	2020	2021	2022	2023
16	20	22	13	7	11	14	10	21	16	16

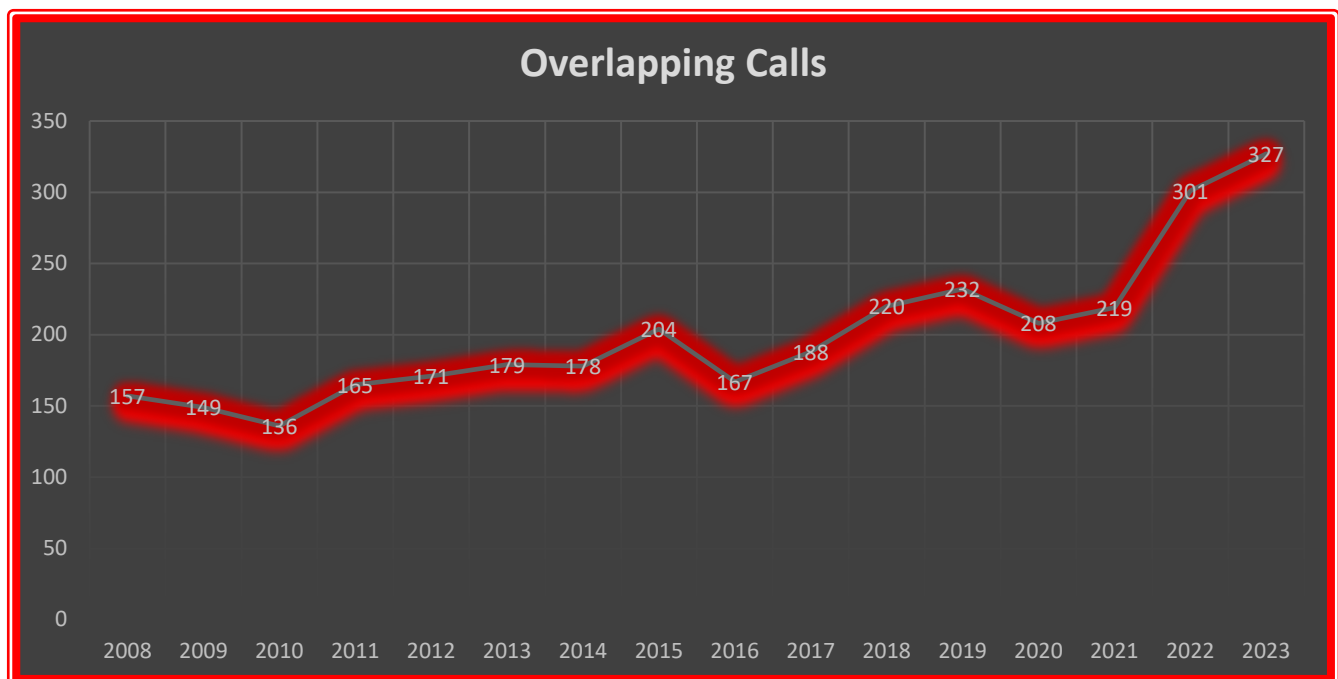
Overlapping Calls

2013	179
2014	178
2015	204
2016	167
2017	188
2018	220
2019	232
2020	208
2021	219
2022	301
2023	327

When we receive calls for assistance prior to clearing the scene of a previous call, it is defined as an overlapping call. It would be extremely difficult to respond to this type of call in a timely manner with less than the mandated 5-person crew. The record for this type of call is shown in the chart



We are beginning to see an increase in having more than one overlapping call at the same time.



Pages

Fire Officers are authorized to page off-duty personnel and part time personnel whenever the need arises. They are to page for assistance at all confirmed structure fires.

There were 18 General Pages in 2023

2013	2014	2015	2016	2017	2018	2019	2020	2021	2022	2023
16	20	25	17	14	10	17	12	20	9	18

Average number of personnel responding to *General Pages*. These numbers do not include the minimum staff level of five (5) or the chief officers.

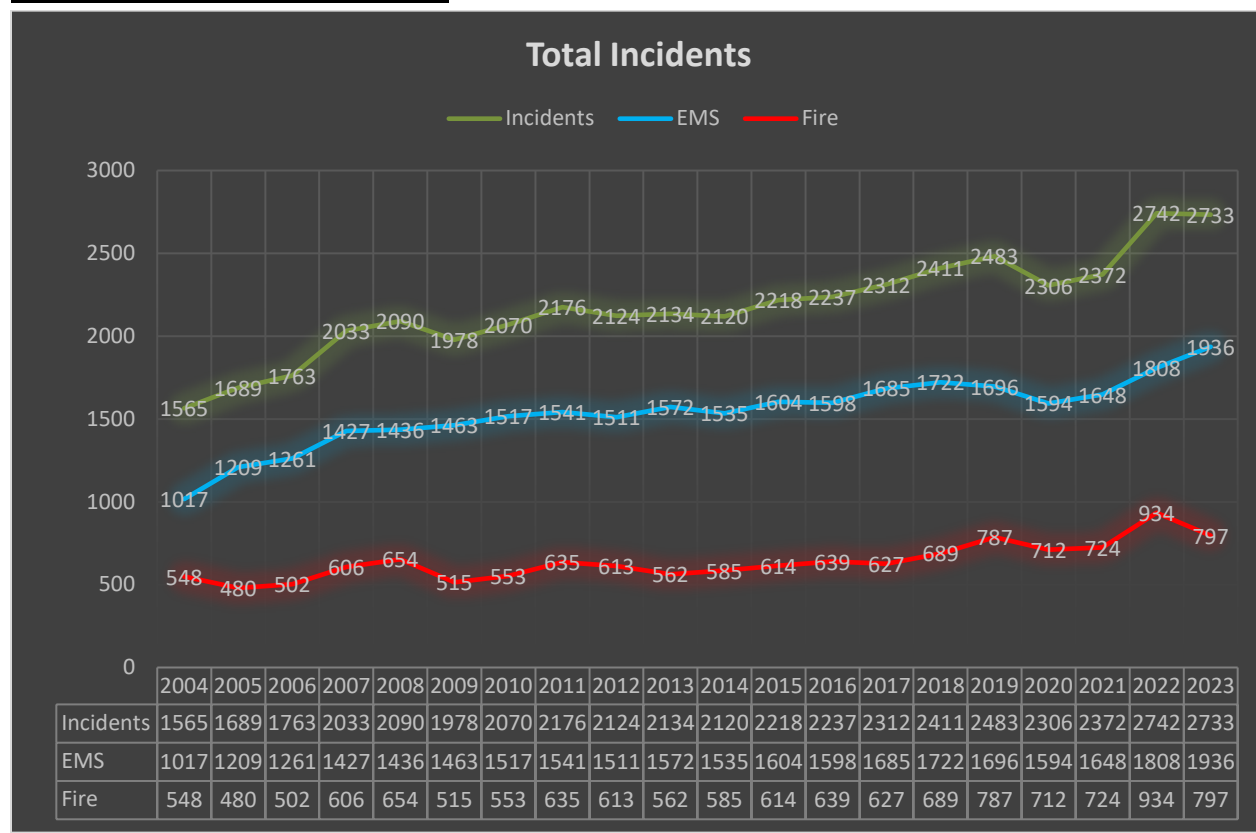
General Pages (all shifts)

Within 5 Minutes 3.4 Personnel
 Within 10 Minutes 6.1 Personnel
 Within 15 Minutes 3.2 Personnel
 Within 20 Minutes 2.3 Personnel

Accumulative totals of off duty personnel responding to a *General Page*

Within 5 Minutes 3.4 Personnel
 Within 10 Minutes 9.5 Personnel
 Within 15 Minutes 12.7 Personnel
 Within 20 Minutes 15 Personnel

Emergency Record



Injuries

There has been no recorded fire death in the City of Winona in the past year.

Recorded Injuries Year	2013	2014	2015	2016	2017	2018	2019	2020	2021	2022	2023
Civilians	0	1	1	1	3	1	0	1	0	0	1
Firefighters	11	3	3	3	1	0	8	4	1	10	1
Total	11	4	4	4	4	1	8	5	0	10	0

Mutual Aid

The Winona Fire Department received mutual aid 4 times in 2023.

Winona Fire Department gave mutual aid 9 times to surrounding communities throughout the year.



Response Time

Winona Fire Department measures response time from the time we get the call until the first unit is on scene. The Winona Fire Department average emergency response time for the year 2023 was 3 minutes and 47 seconds

Comparable Fire Loss

Year	Fire Alarm Calls	Fire Loss \$ Amount
2013	562	\$2,068,439
2014	585	\$1,760,381
2015	614	\$1,466,714
2016	639	\$673,000
2017	627	\$675,900
2018	689	\$376,250
2019	787	\$643,000
2020	712	\$393,625
2021	724	\$694,531
2022	934	\$3,539,270
2023	797	\$713,425

Bureau of Fire Prevention



Assistant Chief Jason Theusch oversees the fire prevention programs, plan reviews, and facility maintenance. Assistant Chief Jason Theusch works with building officials, architects, and designers to ensure that new construction meets the State Fire Code. Additionally, Assistant Chief Jason Theusch reviews all plans for fire protection systems to help ensure compliance with current codes.

Building Inspections

An important part of fire prevention is that of conducting fire inspections. The Winona Fire Department has been updating the way these inspections are tracked and filed for future needs. The Winona Fire Department conducted a total of 212 inspections this year. In both existing properties and new construction, there were 46 plans reviewed for construction projects, automatic suppression systems and fire alarm systems.



Permits, Licenses & Certificates

Last year, the bureau issued a total of 105 permits, licenses, and certificates, for the purpose of flammable liquid installations, extinguishing system installations, maintenance of portable extinguishers and extinguishing system and burn authorizations.



Fire Investigations

A total of 11 cause and origin fire investigations were conducted by the bureau, with 6 being determined accidental.

Prevention Through Education

While basing our program on the importance of public relations, our primary objectives continue to emphasize the prevention of fire, public education, and the investigation of fire. It is through these objectives that enhanced attitudes and safer properties can be produced, with the occurrence and severity of fires being greatly reduced.

Public Education

Fire education continues to be an important part of the Fire Prevention program. Members of the Winona Fire Department made a guided station tour video and posted it on the Internet; at the time of this writing, the video has more than 4,850 views. The Fire Prevention Week Open House was held on October 11th and over 500 people were in attendance between the two stations. The fifth grade Junior Fire Inspector program included approximately 275 students. This program is conducted by firefighters with direction provided by Firefighter/Driver Mark Vieth. Success of the program has been realized by safely evacuating from fire and increased effective public use of fire extinguishers.



2023 News:



Curt Bittle

After more than 31 years of service, Chief Curt Bittle Retired on October 31, 2023. Curt started with the Winona Fire Department in June of 1992 as a part time fire firefighter and was promoted to full time firefighter on August 18, 1992, then to Captain on May 5, 2007, and to Chief on June 1, 2013.

Joel Corcoran

Joel Corcoran was promoted to Fire Chief on October 31, 2023. Joel started with the Winona Fire Department as a part time firefighter on December 1, 1997, and was promoted to full time on April 19, 2002, then to Captain on May 22, 2012, and to Assistant Chief on March 31, 2016.





Brandon Czaplewski

Brandon Czaplewski was promoted to Assistant Chief in-charge of training on October 31, 2023. Brandon started with the Winona Fire Department as a part time firefighter on January 2, 2007, and was promoted to Full time on April 29, 2012, and Captain on May 5, 2020.

Brad Bartelson

Brad Bartelson was promoted to Captain on October 28, 2023. Brad started with the Winona Fire Department as a part time firefighter on January 1, 2013, and was promoted to full time on May 6, 2017.



Trevor Multhaup

Trevor Multhaup was promoted to full time firefighter on August 19, 2023. Trevor started with the Winona Fire Department as a part time firefighter on January 3, 2017.

New Equipment

In 2023 the fire department took delivery of new turnout gear for all members. We also received new Self-Contained Breathing Apparatus (SCBA). This replaced our aging breathing apparatus and air bottles, along with replacing our old PPE which was at the end of its useful life. This equipment was purchased with the ARPA funds allocated to the City.

Four members of the Green Shift showing off their new Innotech Turnout Gear



Firefighters train while wearing our new Scott SCBAs

Daily Training & Activities

January 2023

Sunday	Monday	Tuesday	Wednesday	Thursday	Friday	Saturday
1 6-Runs Station Maintenance Generator Checks- Live	2 4-Runs Monthly/Weekly Checks 1200- Apparatus Mech 1200- Fire Suppression	3 6-Runs 0930- Pump Ops 1300- Fire Behavior Generator-West-Live 1800- New PT Orientation	4 9-Runs 1030- Apparatus Mech FIT TEST New PT 1800- OSHA Req training New PT Orientation	5 5-Runs 0930- Paramedic Training 1030- Paramedic Training 1300-Vent, Enter, Search	6 8-Runs 0930- Fire Inspections 1030- Fire Suppression 1300- Fire Inspections	7 8-Runs SRU/Trailer checks Tanker Station Maintenance
8 1-Runs Station Maintenance Generator Checks	9 6-Runs Weekly/SCBA Checks 1300- Forcible Entry 1330- Size Up	10 10-Runs 0930-Rules, Regs, Memc 1030- Extrication 1300- JFIP 1330- Paramedic Training Generator-West 1800- FFI- Registration OSHA Topics	11 9-Runs 0930- RIT 0930- Apparatus Mech ***1800 RIT 1800- FFI The Fire Service	12 6-Runs 0930-High Angle Rescue 1000- JFIP 1300- Paramedic Training	13 10-Runs 0930- Fire Inspections 0930- Apparatus Mech 1400- Paramedic Training	14 7-Runs Aerial checks Station Maintenance
15 10-Runs Station Maintenance Generator Checks	16 7-Runs Weekly/Monitor Checks MLK Day	17 7-Runs 0800- PALS @ WAAS 1000- Paramedic Training 1030- JFIP Generator-West 1800- FFI FF Health and Safety	18 6-Runs 0930- Paramedic Training 1400- Ropes and Knots ***1800-PPE and SCBAs 1800- FFI- PPE	19 7-Runs 0900- JFIP 0930- Paramedic Training 1300- Paramedic Training	20 11-Runs 1000-Fire Inspections 1300-Station Maintenance	21 8-Runs Backup apparatus checks Station Maintenance
22 4-Runs Station Maintenance Generator Checks	23 6-Runs Weekly/Extinguisher Check Eye Wash Stations 0930- Paramedic Training 1300- Pump Operations	24 6-Runs 1030- Pump Operations 1300- Hose Generator-West 1800- Fire Service Communications	25 8-Runs 0930- Paramedic Training 1300- Hose 1800- Portable Fire Extinguishers	26 3-Runs 0930-Paramedic Training 1230-JFIP 1300-Paramedic Training	27 10-Runs 0930-Fire Inspections 1300- Fire Inspections	28 8-Runs Aerial checks Station Maintenance 0800- PPE SCBA Port Exting., FF Tools & Equip, FD Comm
29 8-Runs Station Maintenance Generator Checks	30 3-Runs Weekly Checks Check tires on other equipment trailers, fans, insulvac, wagon Pressure test auto valves 0845- JFIP 0930- Paramedic Training	31 8-Runs 0930- Paramedic Training 1300- Paramedic Training 1400- Tactical Medic Generator-West 1800- FFI- Fire Behavior	1	2	3	4

FEBRUARY 2023

Sunday	Monday	Tuesday	Wednesday	Thursday	Friday	Saturday
29	30	31	1 8-Runs 0930 High Angle Rescue 1800- Emergency Mgmt **1800-High Angle Rescue 1800-FFI- Building Const	2 5-Runs 0930- Paramedic Training 0930- Auto Extrication	3 8-Runs 0930- Paramedic Training 1300- Paramedic Training	4 8-Runs SRU/Trailer checks Tanker Station Maintenance
5 7-Runs Station Maintenance Generator Checks- Live	6 8-Runs Monthly/Weekly Checks Send Amy UTV Hours 1300-Paramedic Training 1300- Apparatus Mech	7 5-Runs 0800- ACLS 1300-Paramedic Generator-West-Live 1800- FFI- Rope & Knots	8 10-Runs 0930- Paramedic Training 1400- Safety 1800- FFI- FF Tools and Equipment ***Red Cross Presentation **1800-UTV and Pumping	9 5-Runs 0930- Hazmat Tech 1300- Hazmat Tech	10 6-Runs 1030- Paramedic Training 1215- Public Safety Edu 1300- Paramedic Training	11 8-Runs Aerial checks Station Maintenance 0800-FFI-Ladders Ropes and KNots
12 8-Runs Station Maintenance Generator Checks	13 6-Runs Weekly/SCBA Checks 0930- Fire Behavior	14 7-Runs 0930- Extrication 1300- Fire Behavior 1800- FFI- Forcible Entry	15 8-Runs 0930-Paramedic Training 1800- Fire Behavior 800-FFI-Search & Rescue	16 7-Runs 0815-Safety Meeting 1030- Size Up 1300-Confined Space	17 14-Runs 0930-Fire Inspections 1300-Fire Inspections	18 11-Runs Backup apparatus checks Station Maintenance
19 10-Runs Station Maintenance Generator Checks	20 8-Runs Weekly/Monitor Checks 1030-Fitness and Wellness	21 5-Runs 1000-Fitness and Wellness 1300-Extrication 1400- Hazmat Tech Generator-West 1800- FFI- Ventilation	22 7-Runs 0930-Paramedic Training 1300-Paramedic Training 1800- FFI- Slavage and Overhaul	23 8-Runs 0930- Hydrants 1130- Hazmat	24 9-Runs 0930-Fire Inspections 1300-Fire Inspections	25 4-Runs Aerial checks Station Maintenance
26 8-Runs Station Maintenance Generator Checks	27 8-Runs Weekly/Extinguisher Check Eye Wash Stations Check tires on other equipment ailers, fans, insulvac, wags Pressure test auto valves 1300-Paramedic Training	28 0930- Foam 1300- Rescue Carries 1400-Tactical Medic Generator-West 1800- FFI- Water Supply	1	2	3	4

MARCH 2023

Sunday	Monday	Tuesday	Wednesday	Thursday	Friday	Saturday
26	27	28	1 5-Runs 1300- Paramedic Training 1300- Cold Water Rescue **1800-Cold Water Rescue 1800- FFI- Fire Hose, Appliances & Nozzles	2 5-Runs 0930- Equipment Maint 1300- Foam	3 4-Runs 0930-Fire Inspections 1300-Fire Inspections	4 10-Runs SRU/Trailer checks Tanker Station Maintenance 0900- FFI Practicals in Austin
5 5-Runs Station Maintenance Generator Checks- Live	6 7-Runs Monthly/Weekly Checks Send Amy UTV Hours 0815- Officer meeting 1300-Streets and Locations 1400-Rules, Regs, memo	7 8-Runs 1400-Rules, Regs, memo 1300- High Angle Rescue 1300- Equipment Maint Generator-West-Live 1800- Supply Line & Attack Line Evolutions	8 5-Runs 0830-Paramedic Training ***1800-Hose 1800- FFI FF Suppression	9 8-Runs 1300- Search & Rescue	10 7-Runs 0930-Fire Inspections 1300-Fire Inspections	11 7-Runs Aerial checks Station Maintenance 0800- Water Supply Hose/Nozzles/ Attack Line
12 9-Runs Station Maintenance Generator Checks	13 3-Runs Weekly/SCBA Checks 1300-Station Maintenance	14 6-Runs 0930-High Angle 1300- Ground Ladders 1400-Tactical Medic Generator-West 1800- FFI- FF Survival	15 9-Runs 0930-Ropes and Knots 1030- Paramedic Training Possibly help with sandbagging ops **1800-RIT Training 1800- FFI- FF Rehab	16 6-Runs 0930-Fitness and Wellness 815-Sandbagging ops 1300-Highrise Ops	17 6-Runs 0930-Fire Inspections 1300-Fire Inspections	18 3-Runs Backup apparatus checks Station Maintenance
19 4-Runs Station Maintenance Generator Checks	20 6-Runs Weekly/Monitor Checks 1315-Paramedic Training 1315-Forcible Entry 1400- Equipment Maint	21 6-Runs 0930-Streets and Locations 0932- Equipment Maint 1300- High Angle Rescue Generator-West 1800- FFI Wildland Fire	22 7-Runs 0930-Forcible Entry 1030-Station Maintenance 1300-Rescue Carries 1800-FFI Written State Test	23 8-Runs 1100-High Angle Rescue w/ tree crew	24 11-Runs 0930-Fire Inspections 1300-Fire Inspections	25 8-Runs Aerial checks Station Maintenance 0800- Austin State Fire School
26 8-Runs Station Maintenance Generator Checks 0800- Austin State Fire School	27 7-Runs Weekly/Extinguisher Check Eye Wash Stations Check tires on other equipment ailers, fans, insulvac, wags Pressure test auto valves 1400-Equipment Maint	28 9-Runs 0930-Search and Rescue 1300-Rescue Carries Generator-West 1800- Haz Mat Ops Regs, Standards, Laws Properties & Effects	29 6-Runs 0800-IAAI Conference 1030-Equipment Maint 1300-Tactical Medic 1800- Haz Mat Ops Recognizing and ID Hazards	30 5-Runs 0800-IAAI Conference 0930-Hazmat Operations 1300-Hazmat Technician	31 3-Runs 0800-IAAI Conference 1100-Fire Inspections 1400-Forcible Entry	1

APRIL 2023

Sunday	Monday	Tuesday	Wednesday	Thursday	Friday	Saturday
26	27	28	29	30	31	1 13-Runs SRU/Trailer checks Tanker Station Maintenance 0800- Live Burn Trailer for FF I
2 4-Runs Station Maintenance Generator Checks- Live	3 12-Runs Monthly/Weekly Checks Send Amy UTV Hours 0845- JFIP	4 9-Runs 0800- Equipment Maint 0930- Apparatus Maint 1300- Paramedic Training Generator-WestLive 1800- Haz Mat Ops Understanding the Hazard	5 10-Runs 0930- Paramedic Training 1300- Search and Rescue 1315- Emergency Mgmt 1800- PPE 1800- Haz Mat Ops Est Harm/ Planning Resp	6 4-Runs 0930- Size up 1000- PALS 1300- Equipment Maint	7 6-Runs 0800-Search and Rescue 0930- Boat Operations 1300- Equipment Maint	8 10-Runs Aerial checks Station Maintenance
9 11-Runs Station Maintenance Generator Checks	10 11-Runs Weekly/SCBA Checks	11 16-Runs 0930- Fit Testing 1030- Equipment Maint 1300- Pump Operations Generator-West 1800- Haz Mat Ops Implementing Response	12 9-Runs 0930- High Angle Rescue 1030- Wildland Firefighting 1300-Station Maint 1800-High Angle-Garvin Hts 1800- Haz Mat Ops Responder Health Product Control	13 10-Runs 0800-Search and Rescue 0930-Water Rescue 1300-Pump Operations	14 9-Runs 1000-Compressor Repair	15 5-Runs 0800- Hazmat Tech Backup apparatus checks Station Maintenance 0800- Hazmat Ops PPE
16 11-Runs 0800- Hazmat Tech Station Maintenance Generator Checks	17 9-Runs 0800- Hazmat Tech	18 8-Runs 0800- Weekly Checks 1300- High Angle Rescue 1400- Pump Operations Generator-West 1800- FF II Establishing & Transferring Command	19 4-Runs 0930- Monitor Checks 1030- JFIP 1400- Hazmat Tech ***1800-Fit Testing & SCBA's 1800- FF II Advanced Fire Suppression	20 7-Runs 0800- Public Service 1300- Public Service	21 3-Runs 0800-Public Service 0900-JFIP	22 6-Runs Aerial checks Station Maintenance
23 8-Runs Station Maintenance Generator Checks	24 13-Runs 0800- Hazmat Tech	25 3-Runs 0800- Hazmat Tech 1000-Fit Testing Generator-West 1800- Haz Mat Ops State Cert Exam	26 8-Runs 0800- Hazmat Tech 0930- JFIP 1800- FF II Assisting Special Rescue Teams	27 7-Runs 1300- Auto Extrication	28 8-Runs 0930-OSHA Req. Training 0930- Station Maint 1130-JFIP 1300-OSHA Req. Training	29 9-Runs SRU/Trailer checks Tanker Station Maintenance
30 8-Runs Station Maintenance Generator Checks	1					

MAY 2023

Sunday	Monday	Tuesday	Wednesday	Thursday	Friday	Saturday
30	1 11-Runs Monthly/Weekly Checks Send Amy UTV Hours 1300-Fire Suppression	2 6-Runs 1400-Tactical Medic 1800-Fire Cause and Origin Generator-West 1800-FF II- Detection Sup/ Smoke Systems	3 5-Runs 0800- Hazmat Tech 1800- FFII- Fire & Life Safety Initiatives Fire Origin and Cause **1800-Rescue Carries	4 7-Runs 0800- Hazmat Tech	5 7-Runs 0800- Hazmat Tech	6 7-Runs Aerial checks Station Maintenance 0800-Fire Cause and Origin 0800- FFII Vehicle Rescue & Extrication
7 8-Runs Station Maintenance Generator Checks- Live 0800- Fire Cause and Origin	8 7-Runs Weekly/SCBA Checks 0930- Equipment Maint 1000- Equipment Maint	9 7-Runs 0930-Officer Training 1300-Boat Operations 1800-Fire Cause and Origin Generator-West	10 8-Runs 0930- Extrication 1000- Equipment Maint 1300- Public Service 1800- CEVO *Drivers Training-Trailers	11 7-Runs 0900- Drivers Training 0930- Equipment Maint 1300-Pump Operations	12 5-Runs 0930-Fire Inspections 1300-Fire Inspections	13 5-Runs Backup apparatus checks Station Maintenance
14 6-Runs Station Maintenance Generator Checks	15 13-Runs 0800- Hazmat Tech	16 6-Runs 0800- Hazmat Tech 1800-Fire Cause and Origin Generator-West	17 6-Runs 0800- Hazmat Tech **1800-Prep for State Cert Practicals	18 9-Runs Weekly/Monitor Checks 1000-Fitness and Wellness 1130-Safety 1500-Station Maintenance	19 10-Runs 0930-Fire Inspections 1030-Fitness and Wellness	20 6-Runs Aerial checks Station Maintenance 0800-FF II State Cert Test & Practicals
21 2-Runs Station Maintenance Generator Checks	22 3-Runs 0800-Fire Cause and Origin Weekly/Extinguisher Check Eye Wash Stations 1300-Hose Testing	23 5-Runs 0800-Fire Cause and Origin 0930-Hose Testing 1300-Hose Testing Generator-West	24 5-Runs 0800-Fire Cause and Origin 0930-Hose Testing 1300-Hose Testing	25 4-Runs 0800-Fire Cause and Origin 0930-Hose Testing 1100- Equipment Maint 1300-Hose Testing	26 8-Runs 0800-Fire Cause and Origin 0930-Hose Testing 0950-Station Tour	27 7-Runs SRU/Trailer checks Tanker Station Maintenance
28 6-Runs Station Maintenance Generator Checks	29 12-Runs Weekly Checks Check tires on other equipment trailers, fans, insulvac, wagon Pressure test auto valves	30 5-Runs 0930-Trench Rescue 1115-High Angle Rescue 1145-Paramedic Training Generator-West	31 8-Runs 0930-Hose Testing 1300-Hose Testing	1	2	3

JUNE 2023

Sunday	Monday	Tuesday	Wednesday	Thursday	Friday	Saturday
28	29	30	31	1 7-Runs 0930-Hose 1300-Trench Rescue	2 8-Runs 0930-Incident Critiques 1330-Fire Inspections	3 5-Runs Aerial checks Station Maintenance
4 4-Runs Station Maintenance Generator Checks- Live	5 8-Runs Monthly/Weekly Checks	6 9-Runs Monthly/Weekly Checks 0930- Officer training 0945-Detector Installation 1300-Equipment Maint Generator-West-Live	7 6-Runs 0930-Hose Testing 1300-Hose Testing 1800-Policies, UTV Safety Boat Ops/ Pumping Ops	8 9-Runs 1000- Ventilation 1330- Forcible Entry	9 6-Runs 0930-Fire Suppression 1300-Pump Operations	10 6-Runs Backup apparatus checks Station Maintenance
11 2-Runs Station Maintenance Generator Checks	12 4-Runs 0800-Fire Cause and Origin Weekly/SCBA Checks	13 7-Runs 0800-Fire Cause and Origin 0800- Public Service 0930- Hose 1300- Ventilation Generator-West	14 10-Runs 0800-Fire Cause and Origin 0850- Paramedic Training 1330-Station Maintenance Steamboat Days ***1800-Fire Inspection *1900-High Angle Rescue	15 10-Runs 0800-Fire Cause and Origin 0900-Hazmat Tech 1000- Ground Ladders 1300-Search and Rescue Steamboat Days	16 14-Runs 0800-Fire Cause and Origin 0930-Fire Inspections 0930- Hose 0930-Monitor Calibration Steamboat Days	17 10-Runs Aerial checks Station Maintenance 0900- Public Service Steamboat Days
18 4-Runs Station Maintenance Generator Checks 1100-Public Service 2000-Public Service Steamboat Days	19 11-Runs Weekly/Monitor Checks	20 7-Runs 0930- Hose 0930- Monitor Checks 1330-Ventilation Generator-West	21 6-Runs 0930-Ventilation 1800-Hose advancements Ventilation	22 5-Runs 1015-Equipment Maint	23 7-Runs 0930-Search and Rescue 1300-Fire Inspections 1445- Hose	24 13-Runs SRU/Trailer checks Tanker Station Maintenance
25 6-Runs Station Maintenance Generator Checks	26 15-Runs Weekly/Extinguisher Check Eye Wash Stations Check tires on other equipment ailers, fans, insulvac, wags Pressure test auto valves 1300-RIT Training	27 7-Runs 1000-Search and Rescue 1300-Boat Operations Generator-West	28 9-Runs 0930-RIT Training 1300-RIT Training	29 4-Runs 0930- Pump Operations 1300-Auto Extrication	30 5-Runs 0930-Search and Rescue 1230-Search and Rescue	1

JULY 2023

Sunday	Monday	Tuesday	Wednesday	Thursday	Friday	Saturday
25	26	27	28	29	30	1 3-Runs Aerial checks Station Maintenance
2 11-Runs Station Maintenance Generator Checks- Live	3 5-Runs Monthly/Weekly Checks Send Amy UTV Hours	4 13-Runs Generator-West-Live Independence Day	5 10-Runs 0930-Structural Collapse 1000-Public Service 1100-Apparatus Maint ***1800-Structural Collapse	6 7-Runs 0930-Paramedic Training 1300-Structural Collapse	7 4-Runs 0930-Fire Inspections 1300-Fire Inspections	8 7-Runs Backup apparatus checks Station Maintenance 1000- Standpipe Drill
9 4-Runs Station Maintenance Generator Checks	10 5-Runs Weekly/SCBA Checks 1300-Fire Suppression	11 6-Runs 0930-Confined Space 1300- Boat Operations 1400-Tactical Medic Generator-West	12 8-Runs 0930-Structual Collapse ***1800-Structural Collapse	13 8-Runs 0900-Drivers Training	14 7-Runs 0930-Structual Collapse 1330- Confined Space	15 9-Runs Aerial checks Station Maintenance
16 4-Runs Station Maintenance Generator Checks	17 6-Runs Weekly/Monitor Checks 1300- Swiftwater Rescue 1400-EMS Regulations	18 5-Runs 0930- Size Up 1300-Public Service 1330-Paramedic Training Generator-West	19 7-Runs 0930-Confined Space 0930-EMS Regulations ***1800-Forcible Entry RIT Training	20 5-Runs 0930-EMS Regulations 1300- Swiftwater Rescue	21 6-Runs 0930-Fire Inspections 1330-Fire Inspections	22 4-Runs SRU/Trailer checks Tanker Station Maintenance
23 6-Runs Station Maintenance Generator Checks	24 8-Runs Weekly/Extinguisher Checks Eye Wash Stations 1030- Equipment Maint 1030-EMS Regulations 1300-Pump Operations	25 8-Runs 0930-Search and Rescue 1300-Forcible Entry Generator-West	26 11-Runs 1300-High Angle rescue	27 13-Runs 0930-High Angle rescue 1300- Hazmat Tech	28 5-Runs 0930-Fire Inspections 1300-Search and Rescue 1400-Fire Inspections 1430-Communications	29 8-Runs Aerial checks Station Maintenance
30 5-Runs Station Maintenance Generator Checks	31 6-Runs Weekly Checks Check tires on other equipment Trailers, fans, insulvac, wags 0930-Equipment Maint 1300-Station Maintenance					

AUGUST 2023

Sunday	Monday	Tuesday	Wednesday	Thursday	Friday	Saturday
30	31	1 7-Runs 0900-Truck Visit 0930-Equipment Maint 1300- Rescue Carries 1400-Tactical Medic Generator-West-Live	2 9-Runs 0930-Equipment Maint *1800-High Angle Rescue	3 7-Runs 0930-Compart. familiarization 0930- Equipment Maint 1300-Water Supply	4 9-Runs 0930-Fire Inspections 1300-Fire Inspections	5 6-Runs Backup apparatus checks Station Maintenance
6 9-Runs Station Maintenance Generator Checks- Live	7 10-Runs Monthly/Weekly Checks Send Amy UTV Hours	8 7-Runs 0930-Pump Operations 1300-Pump Operations Generator-West	9 11-Runs 0930-Structural collapse **1800-Pump Operations Streets and Locations	10 8-Runs 0930-High Angle Rescue 1300-Fire Inspections	11 4-Runs 0930-Structural collapse	12 12-Runs Aerial checks Station Maintenance
13 5-Runs Station Maintenance Generator Checks	14 4-Runs Weekly/SCBA Checks 1330-Fire Extinguisher demo	15 7-Runs 0930-Equipment Maint 1300- Water Rescue Generator-West	16 9-Runs 0815-Fire Inspections 1330-Fire Extinguisher demo 1330-Streets and Locations *1800-High Angle Rescue	17 17-Runs 1000-Station Maint 1000-Apparatus Familiarization 1300- Incident Critique	18 3-Runs 0930-Familiarization Inspections 1300-Size Up 1400-Streets and Locations 1400-Equipment Maint	19 14-Runs SRU/Trailer checks Tanker Station Maintenance 1100-Truck Visit
20 14-Runs Station Maintenance Generator Checks	21 10-Runs Weekly/Monitor Checks	22 11-Runs 1045- Incident Critique 1600-Truck Visit Generator-West	23 7-Runs 0930-Drivers Training 0930-Fire Cause & Origin 1300-Streets and Locations 1300-Pump Operations	24 8-Runs 0930-Streets and Locations 1030-High Angle Rescue 1300-Incident Critiques 1400-EMS Training	25 12-Runs 0930-Station Maintenance 1300-Pump Operations	26 7-Runs Aerial checks Station Maintenance
27 7-Runs Station Maintenance Generator Checks	28 8-Runs Weekly/Extinguisher Check Eye Wash Stations Check tires on other equipment ailers, fans, insulvac, wags Pressure test auto valves 1300-Pump Operations	29 8-Runs 0930-High Angle Rescue 1300-Swiftwater Rescue 1300-Equipment Maint 1315-Sprinklers Generator-West	30 7-Runs 0930- Swiftwater Rescue 1300-Streets and Locations	31 14-Runs 0930- Swiftwater Rescue 1800-Swiftwater Rescue with USACE at L&D 5	1	2

SEPTEMBER 2023

Sunday	Monday	Tuesday	Wednesday	Thursday	Friday	Saturday
27	28	29	30	31	1 15-Runs 0930-Rules,Regs,Memos 1300-Foam Training	2 8-Runs Backup apparatus checks Station Maintenance
3 7-Runs Station Maintenance Generator Checks- Live	4 15-Runs Monthly/Weekly Checks UTV Hours	5 7-Runs 0945-Streets and Locations 1300-Paramedic Training 1300-Equipment Maint 1400-Tactical Medic 1400-Fire Behavior Generator-West-Live	6 7-Runs 0930-Hose 1200-Ladder Testing ***1800-Aquatic Center	7 10-Runs 0800-Ladder Testing 0930- Equipment Maint 1015-Station Maint 1300-Hose Testing 1300-Equipment Maint	8 9-Runs 0800-Ladder Testing 1015-Compart Familiarization 1030-EMS Regulations 1300-Pump Operations	9 13-Runs Aerial checks Station Maintenance
10 8-Runs Station Maintenance Generator Checks	11 6-Runs Weekly/SCBA Checks Change all scott batteries 0815-Officer Meeting 0800-Public Service	12 7-Runs 0930-SCBA 1300-Drivers Training Generator-West	13 4-Runs 0830-Paramedic Training with WAAS at WH ***1800-Incident Critique Trench Classroom	14 7-Runs 0930-Rules, Regs, Memos 1500-Familiarization Insp	15 8-Runs 0945-Fire Inspections 1300-Truck Visit 1630-Truck Visit	16 7-Runs SRU/Trailer checks Tanker Station Maintenance
17 4-Runs Station Maintenance Generator Checks	18 7-Runs Weekly/Monitor Checks 1400-Fitness and Wellness	19 8-Runs 0930- Structural Collapse 1230-Structural Collapse Generator-West	20 10-Runs 0930- Trench Rescue ***1800- Trench Rescue	21 12-Runs 0930- Trench Rescue 1300-Fitness and Wellness	22 9-Runs 1000-Fitness and Wellness 1100-High Angle Rescue 1315-Fire Inspection	23 6-Runs Aerial checks Station Maintenance
24 15-Runs Station Maintenance Generator Checks	25 9-Runs Weekly/Extinguisher Checks Eye Wash Stations Check tires on other equipment trailers, fans, insulvac, wagon Pressure test auto valves 0930-Aerial Operations	26 10-Runs 0930-Extrication drill 1200-Extrication Drill Generator-West	27 3-Runs 0930-Pump Testing 1315-Pump Testing	28 7-Runs 0930-Fitness and Wellness 1230-Pump Testing	29 6-Runs 0930-Extrication 1300-Station Maintenance	30 6-Runs Backup apparatus checks Station Maintenance

OCTOBER 2023

Sunday	Monday	Tuesday	Wednesday	Thursday	Friday	Saturday
1 6 Runs Station Maintenance Generator Checks- Live 1100-Public Service	2 8 Runs Monthly/Weekly Checks 0930-Flu Clinic 1300-Streets/Locations	3 13 Runs 0845-SCBA 0945-Infection Control 1000-Pump Operations 1900-CPKC Rail Emerg Response Training Sobeski Lodge	4 6 Runs 0900-CPKC Rail Emerg Response Training Sobeski Lodge 1300-Equipment Maintenance 1800-SCBA Inservice 1900-CPKC Rail Emerg Response Training Sobeski Lodge	5 5 Runs 0815-SCBA Inservice 1000-Truck Visit 1300-Equipment Maintenance	6 10 Runs 0930-Pump Testing 1300-SCBA 1715 - Truck Visit	7 11 Runs Aerial checks Station Maintenance
8 8 Runs Station Maintenance Generator Checks 0900-Public Service	9 4 Runs Weekly/SCBA Checks 0900-Station Tour 0930-Truck Visit 1000-West Station Tour 1300-SCBA	10 11 Runs 0900-Pump Testing 0945 Truck Visit 1000-Truck Visit 1300-SCBA 1400-Tactical Medic	11 13 Runs 1000-West Station Tour 1000-Truck Visit 1300-Station Maintenance 1800-Open House	12 8 Runs 1000-Truck Visit 1300-SCBA	13 6 Runs 0900-Station Tour 1030-Confined Space 1300-Fire Inspections	14 9 Runs SRU/Trailer checks Tanker Station Maintenance 0945-Public Service
15 9 Runs Station Maintenance Generator Checks	16 7 Runs Weekly/Monitor Checks 0930-Public Education 1300-Hazmat Monitors	17 8 Runs 0900-Truck Visit 1300-Pump Testing	18 9 Runs 0930-Confined Space Rescue 0930-Truck Visit 1800-WSU Confined Space	19 9 Runs 0930-Paramedic Training 0930-Rules/Regulations 1300-Pump Operations 1430-Truck Visit	20 9 Runs 0930-Truck Visit 1045-SCBA 1315-Fire Inspections	21 7 Runs Aerial checks Station Maintenance
22 4 Runs Station Maintenance Generator Checks	23 7 Runs Weekly/Extinguisher Checks 1300-Extrication 1300-Aerial Operations 1400-Station Maintenance	24 10 Runs 1000-SCBA 1315-SCBA	25 9 Runs 0930-Streets/Locations 1000-Station Tours 1030-Public Education 1200-Public Education 1400-Equipment Maintenance	26 11 Runs 0930-Paramedic Training 1300-Confine Space	27 10 Runs 0945-Fire Inspections 1200-Public Education 1300-Aerial Operations	28 5 Runs Backup apparatus checks Station Maintenance
29 5 Runs Station Maintenance Generator Checks	30 8 Runs Weekly Checks 1000-City Hall 1300-Apparatus Checks	31 6 Runs 1330-Open Enrollment 1400-Incident Critique	1	2	3	4

NOVEMBER 2023 Training

Sunday	Monday	Tuesday	Wednesday	Thursday	Friday	Saturday
29	30	31	1 8 Runs 0930-Equipment Maintenance 1030- High Angle Rescue 1330- Open Enrollment 1800- SCBA	2 7 Runs 0945-Aerial Apparatus Ops 1100-Familiarization Inspe 1300-Ground Ladders	3 7 Runs 0930-Streets and Locations 1030-Incident Critique 1300-Fire Inspections	4 3 Runs Aerial checks Station Maintenance
5 7 Runs Station Maintenance Generator Checks- Live	6 7 Runs 0815-Officers Training Monthly/Weekly Checks 1330-Open Enrollment	7 10 Runs 1100-Thermal imaging 1400-Tactical Medic	8 4 Runs 0930-Fire Suppression 1800-Incident Critique 1900-SCBA	9 6 Runs 0815-Fire Inspections 1030-Report Writing 1330-Thermal Imaging	10 12 Runs 0930-Familiarization Inspection 1300-Thermal Imaging 1400-Incident Critique	11 7 Runs SRU/Trailer checks Tanker Station Maintenance 1600 - Veteran's Day Vigil
12 2 Runs Station Maintenance Generator Checks	13 9 Runs Weekly/SCBA Checks 1300-Station Maintenance	14 10 Runs 0930-Fire Suppression 1345-Equipment Maintenance 1345-Fire Extinguishers	15 6 Runs 0930-Apparatus Mechanical 1000-Station Maintenance 1800-High Angle Rescue	16 8 Runs 0945-Paramedic Training 1300-Streets and Locations	17 11 Runs 0930-Fire Inspections 1300-Apparatus Mechanical	18 5 Runs Station Maintenance 1915-Fire Inspections
19 11 Runs Station Maintenance Generator Checks	20 3 Runs Weekly/Monitor Checks 1000-Apparatus Mechanical 1300-Apparatus Mechanical 1430-EMT Training	21 4 Runs 0930-Apparatus Mechanical 1300-Apparatus Mechanical	22 4 Runs 1000-Fire Suppression	23 7 Runs	24 1 Run 1000-High Angle 1330-Apparatus Mechanical 1430-Pump Operations 1430-Streets and Location	25 7 Runs Backup apparatus checks Station Maintenance
26 6 Runs Station Maintenance Generator Checks	27 6 Runs Weekly/Extinguisher Checks Eye Wash Stations Check tires on other equipment (trailers, fans, insulvac, wagon)	28 7 Runs 0930-High Angle Rescue 1030-Equipment Maintenance 1300-Extrication	29 11 Runs 0930-Water Rescue	30 10 Runs 0930-Equipment Maintenance 1300-Preplan Drawings 1400-Aerial Apparatus Operations	1	2

DECEMBER 2023 Training

Sunday	Monday	Tuesday	Wednesday	Thursday	Friday	Saturday
26	27	28	29	30	1 7-Runs 0945-Fire Inspections 1300-Fire Inspections	2 6-Runs Station Maintenance
3 7-Runs Station Maintenance Generator Checks- Live	4 7-Runs Monthly/Weekly Checks 1030-EMT Training 1300-Paramedic Training	5 9-Runs 0800-Physicals 1000-Incident Critique 1330-Search and Rescue	6 10-Runs 0800-Physicals 1800-Physicals 2000-Incident Critique	7 7-Runs 0800-Physicals 1000-Water Rescue 1300-Aerial Apparatus Ops	8 9-Runs 0930-Hand Tools 0930-Paramedic Training 1000-Fitness and Wellness	9 9-Runs SRU/Trailer checks Tanker Station Maintenance 0800-Officer Training
10 9-Runs Station Maintenance Generator Checks 0800-Officer Training	11 5-Runs Weekly/SCBA Checks 1000-Fitness and Wellness 1300-Rules, Regulations, M 1400-Aerial Apparatus Ops	12 9-Runs 1015-Station Maintenance 1100-Paramedic Training 1300-Rules, Regulations, M 1330-High Angle Rescue	13 7-Runs 0830-Paramedic Training 1200-WSHS Job Fair 1800-Rules, Regulations, M 1830-Water Rescue	14 8-Runs 0930-High Angle Rescue 1300-Apparatus Mechanical	15 12-Runs 1000-Fire Inspections 1045-Size Up 1430 Swearing in @ Sobieski Park Lodge	16 2-Runs Station Maintenance
17 3-Runs Station Maintenance Generator Checks	18 10-Runs Weekly/Monitor Checks 1230-Hazmat-Monitor 1300-Report Writing	19 6-Runs 0930-Report Writing 1300-Confined Space Rescu	20 6-Runs 0930-Hazmat-Monitor 1300-Drivers Training 1800-CPR Training 1800-Fire Streams	21 11-Runs 0930-Incident Critique 1000-Paramedic Training 1330-Equipment Maintenance	22 8-Runs 1000-Fire Inspections 1315-High Angle Rescue	23 6-Runs Backup apparatus checks Station Maintenance
24 6-Runs Station Maintenance Generator Checks	25 6-Runs Weekly/Extinguisher Checks Eye Wash Stations Check tires on other equipm (trailers, fans, insulvac, wag Pressure test auto valves Med Rotation	26 6-Runs 0930-Report Writing 1300-Incident Critique	27 7-Runs 0930-Aerial Apparatus Ops 1030-Fire Extinguishers 1300-Fire Suppression 1900-Incident Critique	28 5-Runs 1000-Fitness and Wellness 1200-Extrication 1300-Emt Training 1400-High Angle Rescue 1400-Paramedic Training	29 10-Runs 0930-Incident Critique 1300-Drivers Training	30 9-Runs Station Maintenance
31 2-Runs Station Maintenance Generator Checks	1					