



**2024**

# **Winona Fire Department Annual Report**





## Winona Fire Department

*Serving Since November 1, 1889*

Headquarters – 451 East 3<sup>rd</sup> Street  
Winona, MN 55987-3912  
Phone: 507-457-8266



<https://www.cityofwinona.com/201/Fire-Department>

### Winona Fire Department 2024 Annual Report

Mayor, City Council, City Manager,

I am pleased to share with you the Winona Fire Department 2024 annual report as a reflection of the dedication, professionalism, and commitment to the department's vision of reducing and mitigating fire, rescue, and medical events in the community we serve.

The Winona Fire Department responded to 2687 calls for assistance in 2024. Rescue and emergency medical calls account for approximately 71% (1909) of our overall call volume. In 2024 Winona Area Ambulance Service began receiving dispatch services through the Winona County Sheriff's Office. This has made it easier to coordinate medical response and streamlined how our EMS response units are assigned to emergencies. This is evident with our slightly lower incident count. However, with an aging population, projections point to continued increase in emergency medical response. With current staffing and paramedic licensures the department will continue to provide advanced life support (ALS) engine response from both stations. Additionally, when staffing allows, we will continue to run an ALS rescue vehicle to expand our ability to handle the larger EMS call volume.

The Winona Fire Department responded to 778 (29%) fire related calls in 2024. The department extinguished 59 fires of various types during the year; all but 14 (general pages) were handled by on duty staff.

For 2024 the City of Winona continues to hold an Insurance Service Office (ISO) Public Protection Classification (PPC) rating of 2. Only 18 other cities in the State of Minnesota enjoy this prestigious classification.

Inside this report you will find not only these statistics, but also some of our accomplishments, training, and fire prevention activities from the past year. Our accomplishments are possible because of the continued support for public safety by the city council and because of the dedication and pride all of us share in our fire department. You are encouraged to contact this office for any further explanation or to tour our facilities.

Respectfully Submitted,

Joel Corcoran, Fire Chief

# Winona Fire Department



## Mission Statement

*The primary mission of the Winona Fire Department is to provide a range of programs designed to protect the lives and property of the inhabitants of the City of Winona from the adverse effects of fires, sudden medical emergencies, or exposure to dangerous conditions created by either man or nature.*

*The department will continue to provide for the expanding needs of the community beyond the extinguishment of fires.*

## Code of Ethics

*The Winona Fire Department is dedicated to the protection and preservation of life and property against fire, emergency medical conditions and other emergencies coming under its jurisdiction. Towards this endeavor, members of the department strive to live according to ethical principles consistent with professional conduct and shall;*

*Maintain the highest standards of personal integrity, be honest and straightforward in dealing with others and avoid conflicts of interest.*

*Place the public's safety and the safety of firefighters above all concerns; be supportive of training and education which promote safe living and working conditions.*

*Be mindful of the needs of others and assist them freely in developing their skills, abilities, and talents to the fullest extent; offer encouragement to those trying to better themselves, the Department and the Fire Service.*

*Be Supportive of the Minnesota State Fire Code, and the fire protection needs of the City of Winona.*

*Foster creativity and be open to consider innovations that may better enable the performance of the duties and responsibilities of the Winona Fire Department.*

# Table of Contents

<u>Page</u>	<u>Section</u>
1	Jurisdiction Protected
1	City of Winona Representatives
2	Organizational Statement
3	Organizational Flow Chart
4	Full Time Roster
5	Training
8	Part Time Program
9	Functions at the Workplace
9	Performance of Duties
9	Emergency Response
10	2024 Statistics
10	Overlapping Calls
11	Pages
11	Emergency Record
12	Injuries
12	Mutual Aid
12	Response Time
12	Comparable Fire Loss
13	Bureau of Fire Prevention
13	Building Inspections
13	Permits, Licenses & Certificates
13	Fire Investigations
14	Prevention through Education
14	Public Education
15	New Equipment
17	2024 News
18	Daily Activities

## Jurisdiction Protected

The Winona Fire Department protects: 24 sq. miles in the city  
25,842 people in the city

Within the Winona city limits there is one airport, ten assisted living / nursing homes, one hospital, two universities with associated off campus student dwelling units and one technical college. The Winona Fire Department protects 18.84 sq. miles of land area and 5.29 sq. miles of water area. The Winona Fire Department also has mutual aid contracts with other departments in the surrounding area.



### City of Winona

Mayor: Scott D. Sherman

City Manager: Chad Ubl

Steve Young	1 <sup>st</sup> Ward
Jeff Hyma	2 <sup>nd</sup> Ward
Sam Zierden Shortridge	3 <sup>rd</sup> Ward
George Borzyskowski	4 <sup>th</sup> Ward
Jerome Christenson	At Large
Jason Dicus	At Large



Winona Fire Department  
Organizational Statement  
Per OSHA 1910.156 and NFPA 1500 Chapter 2 (1992 Edition)

*John Cronin*

Fire Chief

January 1, 2025  
Date

**Organizational Chart**

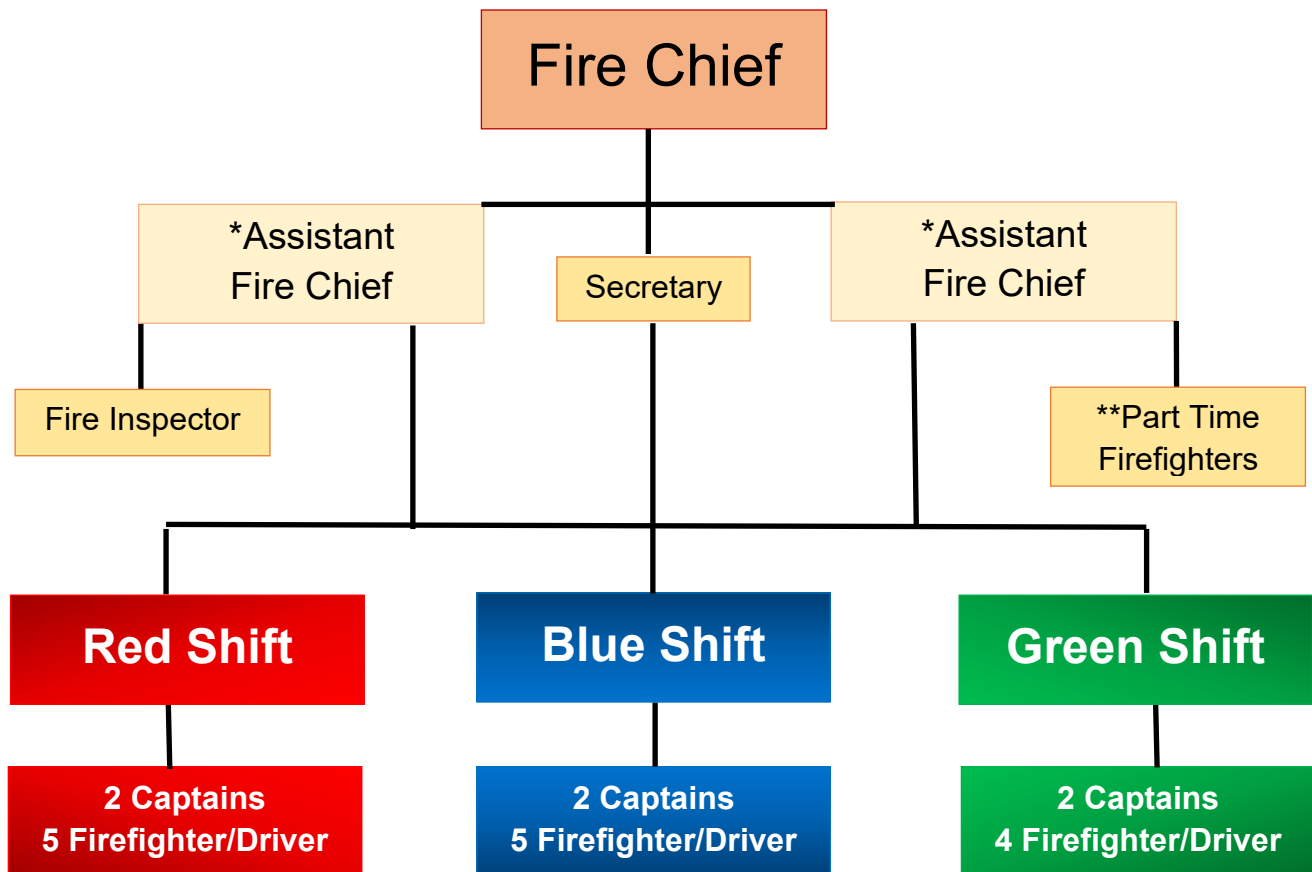
The organizational chart of the Winona Fire Department, as of January 1, 2024, is attached to this statement. As of that date, the department is authorized:

- 1 Fire Chief
- 2 Assistant Chiefs
- 6 Captains
- 14 Firefighter / Drivers
- 18 Active Part-time Firefighters

The Fire Chief and Two Assistant Chiefs work a 40-hour work week. One Assistant Chief oversees fire prevention and public education; and the other Assistant Chief is in charge of training and the part time program. Both Assistant Chiefs are of equal rank and answer directly to the Fire Chief. The 6 Captains and 14 career Firefighter/Drivers are normally assigned to 24-hour shifts averaging 56 hours per week. The 20 career personnel that are assigned to 24-hour shifts are divided into three shifts Red, Blue and Green. Each shift has two officers (Captains) assigned to it plus 4 or 5 Firefighter/Drivers. The Captain at the Central Station is the "Company Officer". The part time firefighters are paid on call.



# Winona Fire Department



\*One Assistant Chief is primarily responsible for fire prevention, public education, investigations, etc.

\*One Assistant Chief is primarily responsible for training, part time program, hazardous materials, etc.

\*\*There is a minimum of 15 and a maximum of 30 part time firefighters authorized by the City Council. The numbers will vary.

The Fire Inspector and Secretary are both part time positions.

# 2024 Full Time Roster

<b>40 Hour Per Week Personnel</b>		<b>Anniversary Date</b>
Fire Chief, Joel Corcoran		4-19-02
Assistant Fire Chief, Jason Theusch		10-14-99
Assistant Fire Chief, Brandon Czaplewski		4-29-12
<b>Captains</b>		
Brandon Luehmann		11-5-05
Kirk Skogebo		3-26-09
Matt Yackel		12-15-10
Shaun Bartelson		1-2-11
Brad Bartelson		5-6-17
Derick Ritter		9-25-11
<b>Firefighter / Drivers / Paramedics</b>		
Mark Allred		12-24-04
Nathan Speltz		6-21-11
Pete Brueggen		4-27-13
Mike Allred		5-11-14
Tom Connell		5-21-16
Tim Carlson		1-1-18
Matt Brown		1-3-17
Trevor Multhaup		8-19-23
Ryan Geiger		7-14-15
<b>Firefighter / Driver</b>		
Mark Vieth		5-23-07
Charles Mayer		4-13-14
Bailey Jensen		1-3-19
Andrew Meyer		2-21-22
Mitch Auman		3-16-24
<b>Secretary</b>		
Crystal Srock	(20 Hours/Week)	8-13-12
<b>Retired</b>		
Captain Matt Lisowski		12-23-05 to 1-31-24



## Training

Assistant Chief Brandon Czaplewski is the assistant chief in charge of training. Assistant Chief Czaplewski plans, schedules and monitors all training whether it is in-house training or outside training at other facilities. Fire Department training is divided into several general areas including firefighting, emergency medical services, hazardous material, and rescue. It is recognized that much of the training overlaps; however, these are general guidelines for record keeping purposes. Assistant Chief Brandon Czaplewski also maintains the training records of all the Winona Fire Department Personnel by keeping all the records and certificates in their own personal binders. These binders are available for inspection by any regulatory agency or the individual.

Prior to becoming a career firefighter, an individual must successfully complete Basic Firefighting training and be a certified Firefighter 1 by the State Fire Service Certification Board and be Certified as an Emergency Medical Technician by EMS Regulatory Board.



Ice Wall Rescue Training

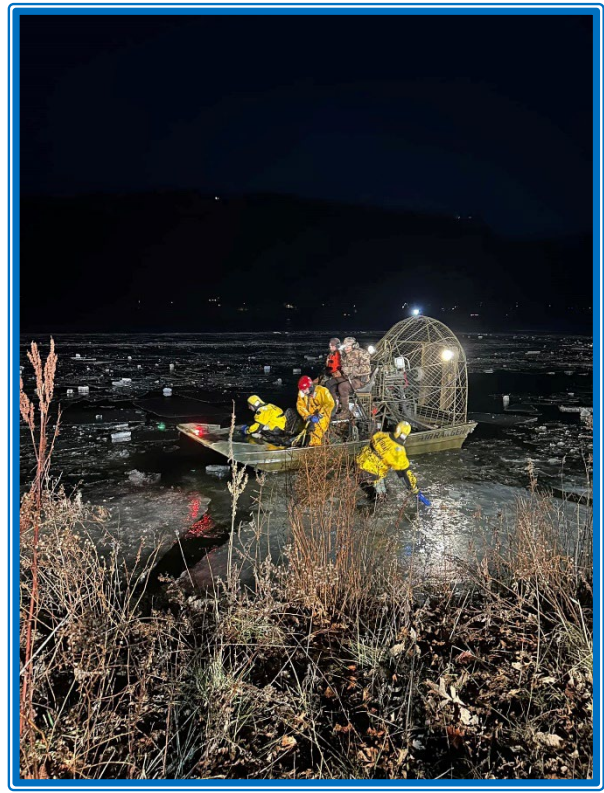


Assistant Chief Brandon Czaplewski is also in charge of the part-time firefighters. Part-time personnel usually train on the first three Wednesday nights of each month for a total of three hours each night. They are also given opportunities to attend training outside of the department. In addition to regular training, part time personnel are encouraged to participate in the “ride along” program. To participate in the ride along program the part time employee must have prior approval of the Assistant Chief In charge of training. Other requirements are Successful completion of Basic Firefighter Training Program (to be allowed to combat and extinguish fires) and certified as a “Emergency Medical Responder” or “Emergency Medical Technician” (to be allowed to assist with emergency medical calls).

A part-time ride along can be conducted between the hours of 0800 and 2200. This is an opportunity for the part time fire fighters to become familiar with the apparatus and daily operations at the stations and to gain experience.



Live burn training with the firefighter 1 class. This is a Riverland Technical College course taught by Winona Firefighters.



Water rescue training with the USACE airboat





## Training with the Minnesota Air Rescue Team



The Minnesota Air Rescue Team (MART) is a cooperative effort between the Minnesota State Patrol Aviation Division and the Saint Paul Fire Department Advanced Technical Rescue Team. The team is available to assist all emergency agencies around the state.



## **Part Time Program**

The part time program was started in June of 1992. Part time firefighters go through the same hiring process as the full-time city employees, including a written test, agility test and interview. They are paid an hourly rate based upon their level of certification.

Below is a listing of the various certification levels of part time personnel.

Last Name	First Name	Step	Certification Level	EMS / Paramedic	Haz/Mat
Brand	Reo	C	II	EMT	OPER
Bronk	Walker	C	II	EMR	OPER
Butenhoff	Phil	C	II	EMT	OPER
Connell	Sam	C	II	EMT	OPER
Cottrell	Daniel	C	II	EMR	OPER
Dahlby	Joel	C	II	EMR	OPER
Douglas	Paul	C	II	EMR	TECH
George	Adam	C	II	EMT	OPER
Hanson	Karl	C	II	EMT	OPER
Harris	Jeffery	C	II	EMT	OPER
Merchlewitz	Rodney	C	II	EMR	TECH
Passehl	Craig	C	II	EMT	TECH
Pham	Andy	C	II	EMT	OPER
Priem	Brad	D	II	PARAMEDIC	OPER
Reinardy	Cole	C	II	EMT	OPER
Romine	Wesley	C	II	EMT	OPER
Thesing	Amanda	C	II	EMT	OPER
Varner	Tyrell	C	II	EMT	OPER



## **Functions at the Workplace**

Career and part time personnel maintain fire department facilities, apparatus, vehicles, and equipment. Major repairs beyond the expertise and time constraints of personnel, are performed at the City of Winona Central Garage, or contracted out.

## **Performance of Duties**

All personnel are expected to perform the arduous tasks of an interior structural firefighter. Additionally, members are expected to perform emergency medical services, rescue operations and certain corrective actions at hazardous material incidents.

It is the intention of the Winona Fire Department to ensure that its members are properly trained and equipped to perform the tasks expected of them, to provide for their safety, and to be in compliance with all regulatory agencies. No member of the department is ever expected to perform duties beyond the scope and intention of their training, personal protective equipment and emergency response equipment.



## **Emergency Response**

Currently the Winona Fire Department maintains a minimum of 5 Personnel on duty, 24 hours per day, every day of the year. The 5 personnel are divided between the two



stations and come together for training, apparatus maintenance, and certain social events. A fully staffed shift comprises of 7 firefighters. When all 7 are on duty we staff a light rescue vehicle that can respond to medical calls. This decreases wear and tear on our fire engines and increases our ability to handle overlapping calls.

Shift Captains are authorized to “page” off duty and part time personnel whenever the need is recognized and shall page all personnel for all confirmed structure fires.

## 2024 Statistics

According to the National Fire Protection Agency (NFPA), a Structure Fire is defined as follows: “any fire that requires the use of a 1 ½ inches or larger fire attack hose line and that also requires the use of self-contained breathing apparatus for members entering the hazardous area”.

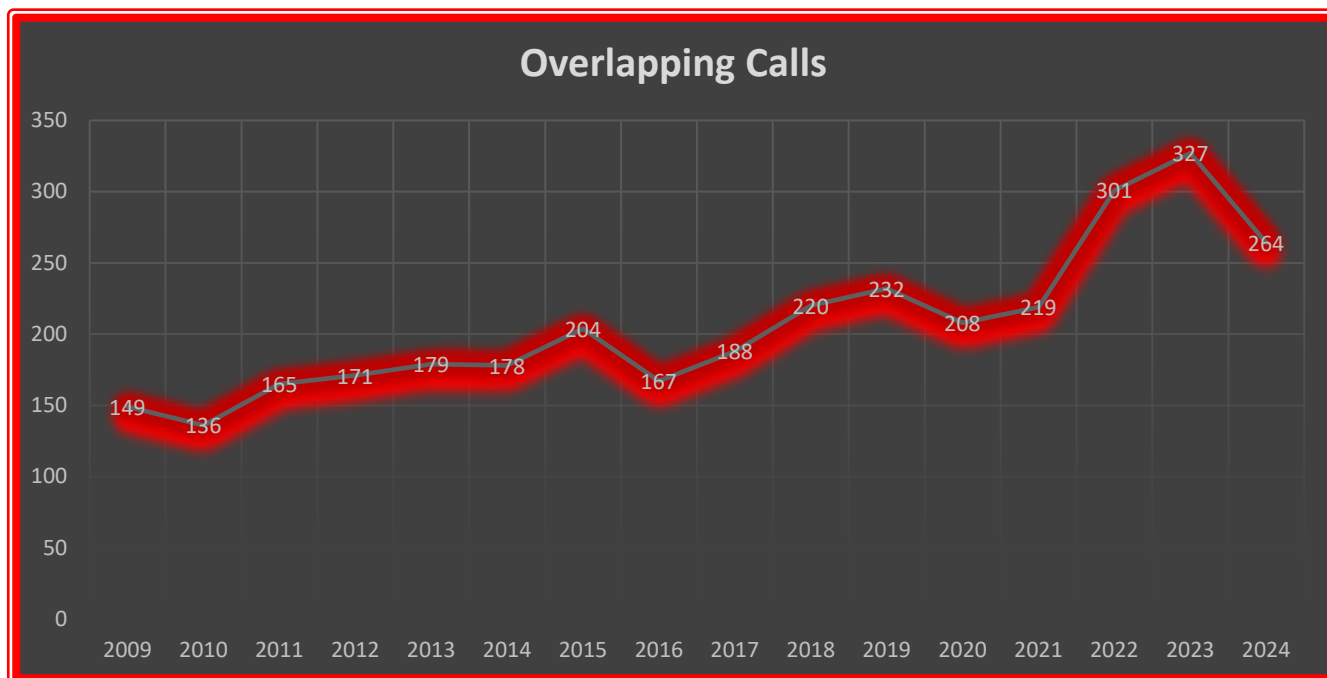
The recent history of this type of fire is:

2013	2014	2015	2016	2017	2018	2019	2020	2021	2022	2023	2024
16	20	22	13	7	11	14	10	21	16	16	10

## Overlapping Calls

2013	179
2014	178
2015	204
2016	167
2017	188
2018	220
2019	232
2020	208
2021	219
2022	301
2023	327
2024	264

When we receive calls for assistance prior to clearing the scene of a previous call, it is defined as an overlapping call. It would be extremely difficult to respond to this type of call in a timely manner with less than the mandated 5-person crew. The record for this type of call is shown in the chart.





## Pages

Fire Officers are authorized to page off-duty personnel and part time personnel whenever the need arises. They are to page for assistance at all confirmed structure fires.  
*There were 14 General Pages in 2024*

2013	2014	2015	2016	2017	2018	2019	2020	2021	2022	2023	2024
16	20	25	17	14	10	17	12	20	9	18	14

Average number of personnel responding to *General Pages*. These numbers do not include the minimum staff level of five (5) or the chief officers.

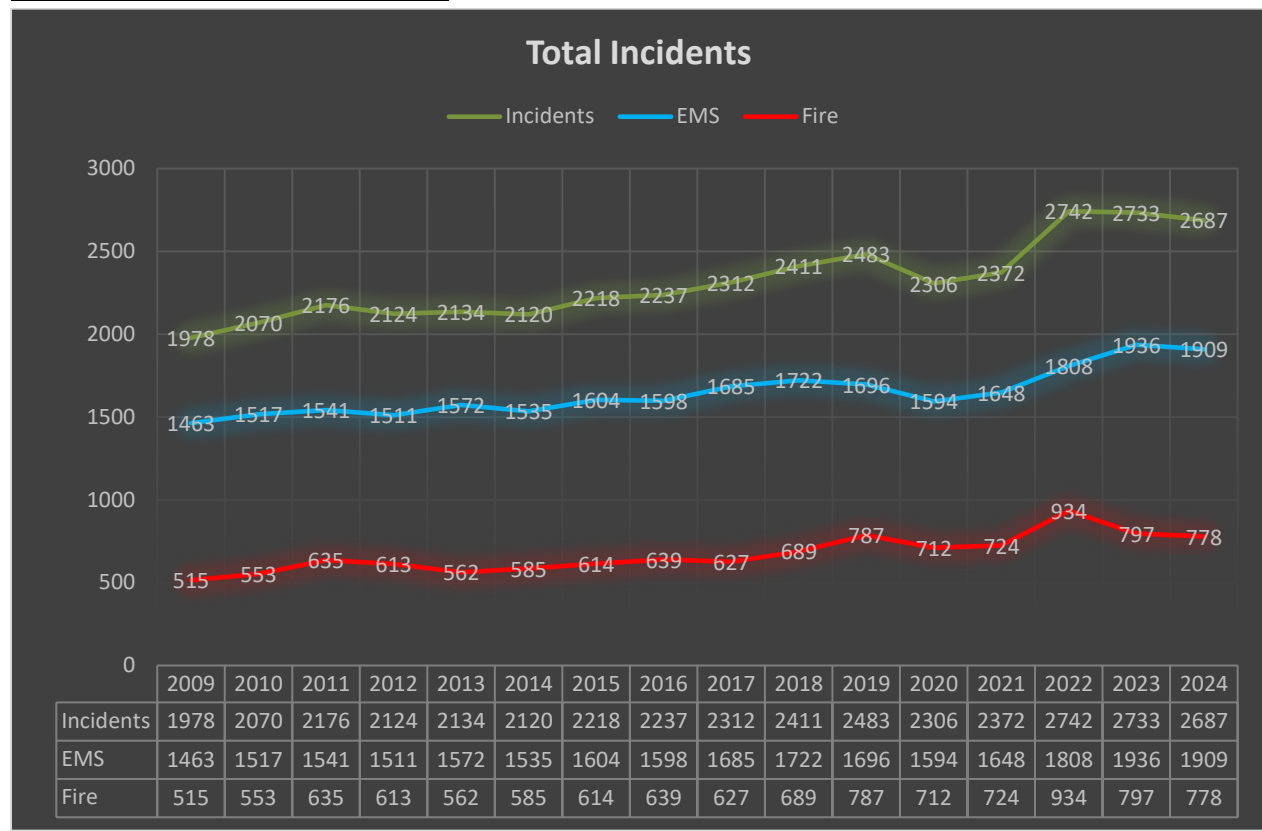
### *General Pages (all shifts)*

Within 5 Minutes 4 Personnel  
 Within 10 Minutes 6 Personnel  
 Within 15 Minutes 3 Personnel  
 Within 20 Minutes 3 Personnel

Accumulative totals of off duty personnel responding to a *General Page*

Within 5 Minutes 4 Personnel  
 Within 10 Minutes 10 Personnel  
 Within 15 Minutes 13 Personnel  
 Within 20 Minutes 16 Personnel

## Emergency Record



## Injuries

There has been no recorded fire death in the City of Winona in the past year.

Recorded Injuries Year	2013	2014	2015	2016	2017	2018	2019	2020	2021	2022	2023	2024
Civilians	0	1	1	1	3	1	0	1	0	0	1	0
Firefighters	11	3	3	3	1	0	8	4	1	10	1	3
Total	11	4	4	4	4	1	8	5	0	10	0	3

## Mutual Aid

The Winona Fire Department received mutual aid 1 time in 2024.

Winona Fire Department gave mutual aid 5 times to surrounding communities throughout the year.



## Response Time

Winona Fire Department measures response time from the time we get the call until the first unit is on scene. The Winona Fire Department average emergency response time for the year 2024 was 3 minutes and 51 seconds

## Comparable Fire Loss

Year	Fire Alarm Calls	Fire Loss \$ Amount
2013	562	\$2,068,439
2014	585	\$1,760,381
2015	614	\$1,466,714
2016	639	\$673,000
2017	627	\$675,900
2018	689	\$376,250
2019	787	\$643,000
2020	712	\$393,625
2021	724	\$694,531
2022	934	\$3,539,270
2023	797	\$713,425
2024	778	\$714,249

## **Bureau of Fire Prevention**



Assistant Chief Jason Theusch oversees the fire prevention programs, plan reviews, and facility maintenance. Assistant Chief Theusch works with building officials, architects, and designers to ensure that new construction meets the State Fire Code. Additionally, Assistant Chief Theusch reviews all plans for fire protection systems to help ensure compliance with current codes.

## **Building Inspections**

An important part of fire prevention is the conducting of fire inspections. The Winona Fire Department has been updating the way these inspections are tracked and filed for future needs. The Winona Fire Department conducted a total of 638 inspections this year. In both existing properties and new construction, there were 32 plans reviewed for construction projects, automatic suppression systems and fire alarm systems.



## **Permits, Licenses & Certificates**

Last year, the bureau issued a total of 70 permits, licenses, and certificates, for the purpose of flammable liquid installations, extinguishing system installations, maintenance of portable extinguishers and extinguishing system and burn authorizations.



## **Fire Investigations**

A total of 8 cause and origin fire investigations were conducted by the bureau, with 7 being determined accidental.



## **Prevention Through Education**

While basing our program on the importance of public relations, our primary objectives continue to emphasize the prevention of fire, public education, and the investigation of fire. It is through these objectives that enhanced attitudes, and safer properties can be produced, with the occurrence and severity of fires being greatly reduced.

## **Public Education**

Fire education continues to be an important part of the Fire Prevention program. Members of the Winona Fire Department made a guided station tour video and posted it on the Internet; at the time of this writing, the video has more than 5,000 views. The Fire Prevention Week Open House was held on October 9<sup>th</sup> and over 500 people were in attendance between the two stations. The fifth grade Junior Fire Inspector program included approximately 275 students. This program is conducted by firefighters with direction provided by Firefighter Mark Vieth. Success of the program has been realized by safely evacuating from fire and increased effective public use of fire extinguishers.





## **New Equipment**

The Winona Fire Department took delivery of several new pieces of equipment in 2024. Public Safety Aid from the state of Minnesota, along with equipment bond allocation paid for this equipment.



New Radio Equipment



New Genesis Rescue Tool  
for Auto Extrication



Lucas CPR Device for  
Assisting with Chest  
Compressions



Zoll Heart Monitors

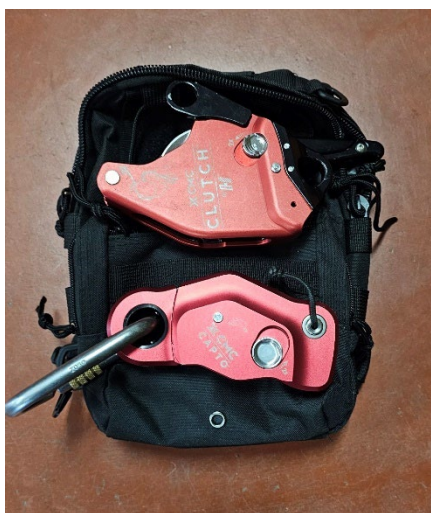




Bauer Air Compressors at  
Both Stations for  
Filling Air Bottles



Thermal Image Cameras



CMC Clutch / Capto  
For High Angle Rescue  
Operations



Positive Pressure Fans  
For Ventilation Operations



Generators



## **2024 News:**



### **Matt Lisowski**

Captain Matt Lisowski retired after 20 years of service. Matt started with the Winona Fire Department as a part-time firefighter on March 1, 2004, and was promoted to full-time December 23, 2005. Matt was promoted again to Captain March 31, 2014. Matt was very active in training the Winona Fire Departments Extrication tools.



### **Derick Ritter**

Derick Ritter was Promoted to Captain January 24, 2025. Derick started with the Winona Fire Department as a part-time firefighter on January 2, 2009, and was promoted to full-time September 25, 2011.



### **Mitchel Auman**

Mitchel Auman was promoted to full-time firefighter on March 16, 2024. Mitchel started with the Winona Fire Department as a part-time firefighter on January 3, 2019.

## Daily Training & Activities

# JANUARY 2024 Training

Sunday	Monday	Tuesday	Wednesday	Thursday	Friday	Saturday
31	10 Runs Monthly/Weekly Checks	2 10 Runs 0930-Paramedic Training  1330-Extrication 1400-Incident Critique 1500-Fire Suppression	3 7 Run 0930-High Angle Rescue  1800-OSHA Required Training 2000-Incident Critique	4 9 Runs 0930-Confined Space Rescue  1400-Paramedic Training 1400-OSHA Required Training	5 7 Runs 0930-EMT Training 0930-Paramedic Training  1300-Drivers Training	6 9 Runs Station Maintenance  Rescue 1/Trailer, UTV Checks
7 9 Runs Station Maintenance Generator Checks- Live	8 9 Runs Weekly/SCBA Checks Aerial Checks 1030-SCBA  1300-Incident Critique	9 9 Runs 1030-Station Maintenance 1030-Paramedic Training  1300-OSHA Required Training 1300-Paramedic Training 1800-Safety	10 6 Runs 0930-RIT Training  1800-Fire Suppression	11 11 Runs 0930-High Angle 1030-Paramedic Training  1300-Paramedic Training	12 11 Runs 0945-Paramedic Training  1300-Report Writing	13 9 Runs SRU/Tanker checks 0800-Officers Training Station Maintenance
14 8 Runs Station Maintenance Generator Checks 0800-Officers Training	15 10 Runs Weekly/Monitor Checks  1100-Hazmat Monitor Checks and Calibration  1300-Paramedic Training	16 5 Runs 0800-Paramedic Training  1300-Hazmat-Technician Level	17 10 Runs 0930-Building Construction  1800-Hazmat-Technician Level	18 7 Runs 0900-Hazmat-Technician Level  1330-Hazmat-Monitor Checks and 1330-Paramedic Training	19 2 Runs 0930-Paramedic Training 0930-High Angle Rescue  1300-Paramedic Training	20 7 Runs Backup apparatus and UTV Checks 1145-Paramedic Training Station Maintenance
21 6 Runs Station Maintenance Generator Checks	22 11 Runs Weekly/Extinguisher Checks Eye Wash Stations Check tires on other equipment (trailers, fans, insulvac, wagon) Aerial Checks Pressure test auto valves  1300-Paramedic Training	23 7 Runs 0930-Station Maintenance 1030-Drivers Training 1030-Paramedic Training  1300-Drivers Training 1300-Paramedic Training 1400-Tactical Medic Training	24 10 Runs 0930-Rules, Regulations, Memos  1800-Fire Behavior	25 11 Runs 0930-EMS Regulations 1030-Fire Behavior  1330-Paramedic Training 1330-Apparatus Compartments Familiarization	26 12 Runs 1000-Fire Inspections 1000-Paramedic Training  1300-Paramedic Training 1315-Hydrants	27 9 Runs Station Maintenance 0800-EMT Training
28 7 Runs Station Maintenance Generator Checks 1200-Paramedic Training	29 7 Runs Weekly Checks Med Rotation 0930-Apparatus Mechanical 1000-Paramedic Training  1300-Apparatus Mechanical	30 3 Runs 0945-Incident Critique 1000-Paramedic Training  1230-Paramedic Training 1315-Pump Operations	31 9 Runs 0945-Familiarization Inspection 1030-Water Supply  1400-Fire Critique 1600-Paramedic Training 1800-Ropes and Knots	1	2	3

# FEBRUARY 2024 Training

Sunday	Monday	Tuesday	Wednesday	Thursday	Friday	Saturday
28	29	30	31	1 4 Runs 0930-Pump Operations	2 7 Runs 0930-Fire Inspection	3 6 Runs Station Maintenance 0800-New Recruit Training
4 6 Runs Station Maintenance Generator Checks- Live 0800-New Recruit Training	5 4 Runs Monthly/Weekly Checks 0930-Apparatus Mechanical 1000-CPR Training  1500-Tactical Medic Training 1800-EMT Training	6 9 Runs 0930-Size Up  1300-Incident Critique 1330-Ground Ladders	7 9 Runs 0930-Fire Suppression  1300-Tactical Medic Training 1800-Incident Critique 1800-EMT Training	8 5 Runs 0930-Aerial Apparatus Ops  1300-EMT Training 1315-Streets and Locations 1400-Drivers Training 1430-Building Construction	9 9 Runs 0930-Public Safety Education 0930-Pre Plan/Inspection 1100-Equipment Maintenance  1300-Pre Plan/Inspection	10 8 Runs SRU/Trailer checks Tanker Station Maintenance
11 7 Runs Station Maintenance Generator Checks	12 10 Runs Weekly/SCBA Checks Aerial Checks 0815-Officers Training  1300-Aerial Apparatus Ops 1300-SCBA 1430-Officer Training 1800-New Recruit Training 1800-EMT Training	13 2 Runs 0945-Fitness and Wellness 1045-Officer Training  1330-Pre Plan/Inspection 1430-Paramedic Training 1430-Equipment Maintenance	14 3 Runs 0800-Drivers Training 0945-Hydrants 1030-High Angle Rescue  1800-EMT Training 1900-Fitness and Wellness	15 7 Runs 0930-Fire Behavior 0930-Paramedic Training  1200-Extrication 1300-Extrication 1900-Paramedic Training	16 7 Runs 1000-Pre Plan/Inspection  1330-RIT Training	17 8 Runs Station Maintenance
18 10 Runs Station Maintenance Generator Checks	19 8 Runs Weekly/Monitor Checks  1300-New Drivers Training 1800-EMT Training	20 11 Runs 0930-Fire Suppression  1300-Fire Suppression	21 6 Runs 0930-Fitness and Wellness 1030-Pump Operations 1100-High Angle  1400-Pump Operations 1800-EMT Training 1800-Water Rescue	22 8 Runs 0930-Drivers Training 0930-Paramedic Training 1030-Fitness and Wellness  1300-Pump Operations	23 7 Runs 0945-Fire Inspections  1300-Report Writing	24 7 Runs Backup apparatus and UTV Checks Station Maintenance Rescue 1 Checks 0800-New Recruit Training
25 8 Runs Station Maintenance Generator Checks 0800-New Recruit Training 0800-Fire Codes	26 5 Runs Weekly/Extinguisher Checks Eye Wash Stations Check tires on other equipment (trailers, fans, insulvac, wago) Aerial Checks Pressure test auto valves 0800-Fire Codes 0930-High Angle Rescue 1300-Fire Suppression 1800-EMT Training	27 5 Runs 0800-Fire Codes 0930-Water Rescue  1900-Emergency Management	28 5 Runs 0800-Fire Codes 0900-Emergency Management  1300-Paramedic Training 1300-Apparatus Mechanical 1400-Streets and Locations 1800-EMT Training	29 6 Runs 0800-Fire Codes 0930-Hasmat Technician Level  1300-Hasmat Technician Level	1	2



# MARCH 2024 Training

Sunday	Monday	Tuesday	Wednesday	Thursday	Friday	Saturday
25	26	27	28	29	1 6 Runs 0800-Fire Codes 0930-Certification Testing 0930-Fire Inspection	2 11 Runs Station Maintenance 0800-Certification Testing
3 3 Runs Station Maintenance Generator Checks- Live	4 12 Runs Monthly/Weekly Checks 1000-Drivers Training 1000-Apparatus Mechanic  1300-Drivers Training 1300-Equipment Maintenance 1800-EMT Training	5 5 Runs 0930-Fitness and Wellness	6 14 Runs 0930-Pump Operations  1800-Search and Rescue 1800-EMT Training	7 5 Runs 0930-Paramedic Training 1030-Rope and Knots  1300-High Angle Rescue	8 4 Runs 0930-Fire Inspection 1030-Paramedic Training 1100-Streets and Locations  1230-New Drivers Training 1300-Fire Inspection 1400-Safety	9 9 Runs SRU/Trailer checks Tanker Station Maintenance 0800-EMT Training 0800-Live Burn
10 4 Runs Station Maintenance Generator Checks	11 11 Runs Aerial Checks Weekly/SCBA Checks 0930-New Drivers Training  1300-SCBA 1400-Fire Inspection 1800-EMT Training	12 9 Runs 0930-Boat Operations  1300-High Angle Rescue	13 7 Runs 0930-Paramedic Training 1030-Certification Testing  1800-Live Burn 1800-EMT Training	14 13 Runs 0800-Live Burn	15 15 Runs 0800-Live Burn	16 12 Runs Station Maintenance  1330-Paramedic Training
17 7 Runs Station Maintenance Generator Checks	18 8 Runs Weekly/Monitor Checks 0930-Monitors Checks and Cal  1300-Drivers Training 1800-EMT Training	19 5 Runs 0800-Paramedic Training 0800-EMT Training  1400-New Drivers Training 1400-Tactical Medic Training 1400-Drivers Training 1800-Pump Operations	20 5 Runs 0930-Extrication  1800-Live Burn 1800-EMT Training	21 15 Runs 0930-Streets and Locations 0930-New Drivers Training 0930-Fire Cause and Origin  1300-New Drivers Training	22 4 Runs 0940-Fire Inspection  1300-Fire Inspection	23 8 Runs Backup apparatus and UTV Checks Rescue 1 Checks Station Maintenance 0800-Search and Rescue 0800-Extrication 0800-Officers Training 0800-Fire Suppression
24 5 Runs Station Maintenance Generator Checks	25 8 Runs Weekly/Extinguisher Checks Eye Wash Stations Check tires on other equipment (trailers, fans, insulvac, wagon) Aerial Checks Pressure test auto valves Med Rotation 0930-Apparatus Mechanical 1300-Aerial Apparatus Ops 1800-EMT Training	26 6 Runs 0930-Paramedic Training 1100-Streets and Locations  1300-Extrication	27 3 Runs  1800-Search and Rescue 1800-EMT Training	28 4 Runs 0930-Ground Ladders  1800-New Recruit Training	29 8 Runs 0930-Fire Inspection  1300-Fire Inspection	30 7 Runs Station Maintenance
31 3 Runs Station Maintenance Generator Checks	1					

# APRIL 2024 Training

Sunday	Monday	Tuesday	Wednesday	Thursday	Friday	Saturday
31	1 6 Runs Monthly/Weekly Checks 1000-Apparatus Mechanical	2 7 Runs 0900-Public Safety Education 0930-Equipment Maintenance 1330-Incident Critique	3 10 Runs 0930-Paramedic Training 0930-Monitor Checks and 1800-RIT Training	4 6 Runs 0930-RIT Training 1215-Public Safety Education 1300-Equipment Maintenance 1330-Streets and Locations	5 10 Runs 0930-Pre Plan/Fire Inspection 1300-Pre Plan/Fire Inspection 1400-Apparatus Mechanical	6 4 Runs Station Maintenance 0800-Paramedic Training
7 5 Runs Station Maintenance Generator Checks- Live	8 9 Runs Weekly/SCBA Checks 0930-Aerial Apparatus Operations 1030-SCBA 1300-Apparatus Mechanical	9 7 Runs 0930-Fitness and Wellness 1000-Incident Critique 1300-Paramedic Training	10 7 Runs 0930-Fitness and Wellness 1300-High Angle Rescue 1800-Paramedic Training 1900-Incident Critique	11 5 Runs 0930-Paramedic Training 1045-Public Safety Training 1300-Pump Operations	12 6 Runs 0900-Public Safety Education 0945-Pre Plan/Fire Inspection 1400-Pre Plan/Fire Inspection	13 13 Runs SRU/Trailer checks Station Maintenance 0800-Hazmat-Operations Level
14 11 Runs Station Maintenance Generator Checks	15 5 Runs 0930-Hazmat-Monitor Checks 1030-Public Safety Education 1300-Public Safety Education 1330-Fire Suppression	16 5 Runs 0930-Drivers Training 0930-Equipment Maintenance 1300-Equipment Maintenance 1400-Tactical Medic Training 1400-Incident Critique	17 6 Runs 1030-Pump Operations 1315-Drivers Training 1800-High Angle Rescue	18 9 Runs 0930-Drivers Training 0930-Equipment Maintenance 1030-Fitness and Wellness 1300-Drivers Training	19 5 Runs 0930-Equipment Maintenance 1045-Pre Plan/Fire Inspection 1300-Drivers Training	20 7 Runs Station Maintenance
21 5 Runs Station Maintenance Generator Checks	22 11 Runs Weekly/Extinguisher Checks Eye Wash Stations Check tires on other equipment (trailers, fans, insulvac, wagon) 0930-Apparatus Mechanical Pressure test auto valves 1300-Aerial Apparatus Operations	23 6 Runs 0830-Drivers Training 1000-High Angle Rescue 1300-Structural Collapse Rescue	24 6 Runs 0930-Fitness and Wellness 1215-Public Safety Education 1300-Forcible Entry 1400-Equipment Maintenance	25 7 Runs 0930-Hose Testing 1300-Hose Testing	26 2 Runs 0930-Hazmat-Technician Level 1300-Apparatus Mechanical 1400-New Drivers Training	27 16 Runs Backup apparatus and UTV Checks Rescue 1 Checks Station Maintenance 0800-Certification Testing
28 4 Runs Station Maintenance Generator Checks	29 3 Runs Med Rotation 1000-Apparatus Mechanical 1330-Hose Testing	30 10 Runs 0900-Pre Plan/Fire Inspection 0945-Hose Testing 1415-Hose Testing	1	2	3	4

# MAY 2024 Training

Sunday	Monday	Tuesday	Wednesday	Thursday	Friday	Saturday
28	29	30	1 5 Runs 0930-Hose Testing	2 6 Runs 0930-Incident Critique 1030-Equipment Maintenance	3 8 Runs 0930-Pre Plan/Fire Inspection	4 6 Runs Station Maintenance 0800-New Recruit Training
5 5 Runs Station Maintenance Generator Checks- Live	6 11 Runs Monthly/Weekly Checks 0930-Hose Testing	7 10 Runs 0930-Station Maintenance 0930-Apparatus Mechanical 1300-Pump Operations	8 8 Runs 0930-Hazmat 1300-New Recruit Tra 1800-Emergency Managemer	9 3 Runs 0930-Apparatus Mechanical 0930-New Drivers Training 1300-Swiftwater/Flood Rescu 1800-New Recruit Training	10 9 Runs 0930-Equipment Maintenance 1300-Pre Plan/Fire Inspection	11 7 Runs SRU/Trailer checks Tanker Station Maintenance 0800-New Recruit Training
12 8 Runs Station Maintenance Generator Checks	13 3 Runs Aerial Checks Weekly/SCBA Checks 1100-Pre Plan/Fire Inspection 1300-Drivers Training	14 8 Runs 0930-New Drivers Training 1300-Apparatus Mechanical 1300-New Drivers Training 1400-Tactical Medic Training	15 8 Runs 0930-Hazmat 1100-Paramedic Training 1300-Public Service 1800-Fire Suppression	16 5 Runs 0930-Hazmat 1030-Boat Operations 1300-Fire Extinguishers 1415-Pre Plan/Fire Inspection	17 5 Runs 0930-Safety 1315-Pre Plan/Fire Inspection 1415-Pre Plan/Fire Inspection	18 6 Runs Station Maintenance 0800-Truck Visit 1200-Drivers Training
19 9 Runs Station Maintenance Generator Checks	20 9 Runs Weekly/Monitor Check 0800-Tactical Medic 0800-Fire Suppression 09303-Hazmat-Monitor Check 1300-Drivers Training 1400-Public Service 1400-Hose	21 9 Runs 0800-Tactical Medic 0800-Fire Suppression 0815-Hazmat	22 8 Runs 0800-Fire Suppression 0800-Hazmat	23 10 Runs 0815-Hazmat	24 14 Runs 0930-Pre Plan/Fire Inspection 1330-Smoke/CO Detector Ins	25 9 Runs Backup apparatus UTV Checks Rescue 1 Checks Station Maintenance
26 11 Runs Station Maintenance Generator Checks	27 17 Runs Weekly/Extinguisher Checks Eye Wash Stations Check tires on other equipme (trailers, fans, insulvac, wagon) 1200-Aerial Apparatus Ops 1200-Equipment Maintenance	28 11 Runs 0945-Fire Suppression 1330-Fire Suppression	29 6 Runs 0930-Search and Rescue 1300-Boat Operations	30 9 Runs 1000-Public Safety Education 1315-Water Supply	31 1 Run 0930-Pre Plan/Fire Inspection 1030-Streets and Locations 1315-Water Supply	1



# JUNE 2024 Training

Sunday	Monday	Tuesday	Wednesday	Thursday	Friday	Saturday
26	27	28	29	30	31	1 4 Runs Station Maintenance
2 9 Runs Station Maintenance Generator Checks- Live	3 7 Runs Monthly/Weekly Checks 0815-Officers Training  1315-Water Supply 1815-SCBA	4 7 Runs 1030-Fire Suppression  1430-SCBA	5 13 Runs 0930-Apparatus Mechanical 1000-Public Service  1800-Sprinklers	6 10 Runs 0930-New Drivers Training 0930-Equipment Maintenance  1300-Sprinklers	7 14 Runs 0900-Sprinklers  1330-Rules, Regulations, Memos	8 8 Runs SRU/Tanker checks  Station Maintenance
9 4 Runs Station Maintenance Generator Checks	10 6 Runs Aerial Checks Weekly/SCBA Checks 0930-Aerial Apparatus Op 1030-SCBA  1300-Fire Suppression	11 8 Runs 0930-Fire Suppression  1300-Pre Plan/Fire Inspection 1345-Truck Visit 1400-Tactical Medic Training	12 8 Runs 0900-Paramedic Training  1800-Fire Suppression 1800-CPR Training	13 7 Runs 1000-Apparatus Mechanical 1100-Fire Behavior  1300-Equipment Maintenance 1400-High Angle Rescue	14 6 Runs 0915-Fire Alarms  1300-New Drivers Training 1300-Apparatus Mechanical	15 4 Runs Station Maintenance  Rescue 1/Trailer Checks
16 Station Maintenance Generator Checks	17 16 Runs Weekly/Monitor Checks 0930-Water Supply 1030-Paramedic Training  1300-Hazmat-Monitor Checks and 1400-Safety	18 6 Runs 0930-SCBA 1000-Safety  1300-Streets and Locations 1300-Drivers Training	19 8 Runs June/teenth 0930-New Drivers Training 1030-SCBA  1300-Streets and Locations	20 7 Runs 0930-Extrication  -	21 3 Runs 0930-Public Service  1300-Extrication	22 7 Runs Backup Apparatus/ UTV Checks  Station Maintenance
23 7 Runs Station Maintenance Generator Checks	24 6 Runs Weekly/Extinguisher Checks Eye Wash Stations Check tires on other equipment (trailers, fans, insulvac, wagon) Aerial Checks Pressure test auto valves Med Rotation 0930-Extrication 1300-Apparatus Mechanical 1330-Paramedic Training	25 10 Runs 0930-Boat Operations  1300-Trench Rescue 1800-CPR Training	26 7 Runs 0845-Truck Visit 1000-Paramedic Training 1030-Boat Operations  1800-Extrication	27 5 Runs 0930-Equipment Maintenance  1300-Equipment Maintenance	28 4 Runs 0930-Pre Plan/Fire Inspection  1300-Extrication	29 9 Runs Station Maintenance
30 7 Runs Station Maintenance Generator Checks	1					

# JULY 2024 Training

Sunday	Monday	Tuesday	Wednesday	Thursday	Friday	Saturday
30	1 4 Runs Monthly/Weekly Checks 0930-Apparatus Mechanical	2 7 Runs 0930-Pump Operations	3 9 Runs 0930-Extrication	4 8 Runs 1100-High Angle Rescue	5 11 Runs 0930-New Drivers Training	6 11 Runs Station Maintenance  Backup Engine Checks
7 9 Runs Station Maintenance Generator Checks- Live	8 9 Runs Aerial Checks Weekly/SCBA Checks 0930-Drivers Training  1300-SCBA	9 18 Runs 0930-New Drivers Training 1030-Ground Ladders  1300-High Angle Rescue	10 7 Runs 0930-Pump Operations  1530-Public Safety Education 1800-Paramedic Training 1900-Trench Rescue	11 10 Runs 0930-Paramedic Training  1300-Fire Suppression 1400-Search and Rescue	12 10 Runs 0930-Fire Suppression  1330-Pre Plan/Fire Inspection	13 14 Runs SRU/Tanker checks  Station Maintenance
14 8 Runs Station Maintenance Generator Checks	15 15 Runs Weekly/Monitor Checks 0800-Swiftwater/Flood Rescue  1300-CPR Training 1345-Monitor Checks	16 6 Runs 0800-Swiftwater/Flood Rescue 0930-RIT Training  1300-Apparatus Mechanical 1345-Trench Rescue	17 7 Runs 0800-Swiftwater/Flood Rescue 0930-Trench Rescue  1800-Trench Rescue	18 10 Runs 0800-Swiftwater/Flood Rescue 0930-Trench Rescue  1330-Streets and Locations 1330-New Drivers Training	19 9 Runs 0800-Swiftwater/Flood Rescue 0930-Trench Rescue  1400-Paramedic Training	20 3 Runs Station Maintenance  Rescue 1/Trailer Checks
21 5 Runs Station Maintenance Generator Checks	22 8 Runs Weekly/Extinguisher Eye Wash Stations Check tires on other e (trailers, fans, insulvac 0930-Communications Pressure test auto valv 1400-Aerial Checks 1530-Truck Visit	23 9 Runs 0930-Communications 1000-Pump Operation  1330-RIT Training 1400-Tactical Medic Training	24 6 Runs 0930-Fire Suppression  1315-Fire Suppression	25 6 Runs 0930-Streets and Locations 0930-Equipment Maintenance  1300-Pump Operations	26 8 Runs 0930-Pre Plan/Fire Inspection  1300-Pre Plan/Fire Inspection	27 4 Runs Station Maintenance UTV Checks
28 13 Runs Station Maintenance Generator Checks	29 8 Runs 0930-Public Safety Education  1300-Management Training 1300-Communications 1400-Apparatus Mechanical	30 5 Runs 0930-Incident Critique 1000-High Angle Rescue  1300-Management Training 1300-Station Maintenance 1400-Truck Visit	31 5 Runs 0800-Trench Rescue 0930-High Angle Rescue  1345-Equipment Maintenance 1345-Station Maintenance	1	2	3

# AUGUST 2024 Training

Sunday	Monday	Tuesday	Wednesday	Thursday	Friday	Saturday
28	29	30	31	1 11 Runs 0800-Trench Rescue 0930-Pump Operations  1300-EMT Training 1300-Fire Codes 1300-Aerial Apparatus Ops	2 5 Runs 0800-Trench Rescue 0930-Pre Plan/Fire Inspection  1300-Pre Plan/Fire Inspection 1300-Officers Training	3 4 Runs Station Maintenance  Backup Engine Checks
4 9 Runs Station Maintenance Generator Checks- Live	5 6 Runs Monthly/Weekly Checks 0930-Apparatus Mechanical  1300-Apparatus Mechanical	6 10 Runs 0930-High Angle Rescue  1800-New Drivers Training	7 12 Runs 0930-New Drivers Training  1800-Communications	8 8 Runs 0830-Pump Operations  1300-Station Maintenance 1300-EMT Training 1300-Paramedic Training	9 5 Runs 0930-Pre Plan/Fire Inspection  1300-Pre Plan/Fire Inspection	10 3 Runs SRU/Tanker Checks  Station Maintenance
11 7 Runs Station Maintenance Generator Checks	12 7 Runs Aerial Checks Weekly/SCBA Checks 0800-Fire Cause and Origin 0800-High Angle Rescue 0930-Apparatus Mechanical  1300-SCBA	13 5 Runs 0800-Fire Cause and Origin 0800-High Angle Rescue 0930-Pump Operations  1300-Equipment Maintenance 1300-Emergency Management 1300-EMT Training	14 8 Runs 0800-Fire Cause and Origin 0800-High Angle Rescue 0930-Rope and Knots  1800-High Angle Rescue	15 8 Runs 0800-Fire Cause and Origin 0800-High Angle Rescue 0930-Trench Rescue 0930-Paramedic Training  1345-Hose Testing	16 4 Runs 0800-Fire Cause and Origin 0800-High Angle Rescue 0930-Aerial Apparatus Ops  1300-Pre Plan/Fire Inspection	17 6 Runs Station Maintenance 0800-High Angle Rescue Rescue 1/Trailer Checks 1100-Truck Visit
18 6 Runs Station Maintenance Generator Checks	19 11 Runs Weekly Checks 0930-Standpipes  1300-Search and Rescue	20 9 Runs 0930-High Rise Operations  1300-High Angle Rescue 1400-Tactical Medic Training	21 6 Runs 0930-Fitness and Wellness  1800-Fire Suppression	22 12 Runs 0930-Fitness and Wellness 1030-High Rise Operations  1300-Incident Critique	23 5 Runs 0930-Pre Plan/Fire Inspection  1230-Monitor Checks and Cal 1400-Pump Operations	24 10 Runs 0900-Truck Visit UTV Checks  Station Maintenance
25 16 Runs Station Maintenance Generator Checks	26 9 Runs Weekly/Extinguisher Check Eye Wash Stations Check tires on other equipment (trailers, fans, insulvac, wag) 0930-Apparatus Mechanical Pressure test auto valves 1300-OSHA Required Training 1300-Paramedic Training 1330-Fire Extinguishers 1400-High Angle Rescue	27 8 Runs 0930-Structural Collapse Rescue  1300-Swiftwater/Flood Rescue	28 7 Runs 0930-Fitness and Wellness  1300-High Angle Rescue	29 9 Runs 0930-Paramedic Training  1300-Size Up	30 9 Runs 0930-Swiftwater/Flood Rescue	31 8 Runs Station Maintenance



# SEPTEMBER 2024 Training

Sunday	Monday	Tuesday	Wednesday	Thursday	Friday	Saturday
<b>1 8 Runs</b> Station Maintenance Generator Checks- Liv	<b>2 8 Runs</b> Monthly/Weekly Checks Send Amy UTV Hours 1000-Drivers Training	<b>3 6 Run</b> 0900-New Drivers Training 0930-High Angle Rescue  1400-Tactical Medic Training	<b>4 5 Runs</b>  1300-Swiftwater/Flood Resc 1500-Public Safety Educatio 1700-EMT Training 1800-Swiftwater/Flood Resc	<b>5 8 Runs</b> 0930-Search and Rescue  1300-Extrication	<b>6 6 Runs</b> 0930-Pre Plan/Fire Inspectio 1000-Size Up  1300-Boat Operations	<b>7 6 Runs</b> Station Maintenance 0900-New Recruit Training Backup Engine Checks
<b>8 6 Runs</b> Station Maintenance Generator Checks	<b>9 10 Runs</b> 0930-Drivers Training Weekly/SCBA Checks  1300-Aerial Apparatus Ops 1330-Drivers Training 1400-SCBA	<b>10 5 Runs</b> 0830-Boat Operations	<b>11 7 Runs</b> 0900-Paramedic Training  1700-EMT Training 1800-High Angle Rescue	<b>12 5 Runs</b> 0930-Pump Operations  1300-Boat Operations	<b>13 7 Runs</b> 0930-Pre Plan/Fire Inspectio  1300-Boat Operations 1415-High Angle Rescue	<b>14 10 Runs</b> SRU/Tanker Checks  Station Maintenance
<b>15 8 Runs</b> Station Maintenance Generator Checks 0930-Search and Rescue	<b>16 6 Runs</b> Weekly/Monitor Checks 0800-Fire Cause and Origin 0815-OfficerTraining 0930-Drivers Training 1100-Fire Extinguishers  1300-Trench Rescue 1300-Equipment Maintenance 1300-Boat Operations 1430-Officer Training	<b>17 9 Runs</b> 0800-Fire Cause and Origin 1000-Search and Rescue  1330-Pump Testing	<b>18 9 Runs</b> 0800-Fire Cause and Origin 0930-Structural Collapse Re  1700-EMT Training 1800-Structural Collapse Re	<b>19 5 Runs</b> 0800-Fire Cause and Origin 0930-Pre Plan/Fire Inspectio  1345-Fire Extinguishers	<b>20 8 Runs</b> 0800-Fire Cause and Origin 0900-Truck Visit 1000-Pre Plan/Fire Inspectio 1030-Search and Rescue  1300-Structural Collapse Re	<b>21 7 Runs</b> Station Maintenance  Rescue 1/Trailer Checks
<b>22 5 Runs</b> Station Maintenance Generator Checks	<b>23 6 Runs</b> 0800-Paramedic Training 0930-Monitor Checks  1300-New Drivers Training	<b>24 7 Runs</b> 0800-Paramedic Training 0845-Fire Extinguishers 1100-Fire Suppression  1330-High Angle Rescue	<b>25 8 Runs</b> 0930-Pump Testing  1700-EMT Training	<b>26 4 Runs</b> 0930-Pump Testing  1400-Equipment Maintenance	<b>27 7 Runs</b> 1000-Hazmat Monitor Check  1330-Pre Plan/Fire Inspectio 1700-Truck Visit	<b>28 9 Runs</b>  UTV Checks  Station Maintenance
<b>29 9 Runs</b> Station Maintenance Generator Checks	<b>30 4 Runs</b> Med Rotation 0930-Search & Rescue 1030-Apparatus Mechanical 1215-Pump Testing	1	2	3	4	5

# OCTOBER 2024 Training

Sunday	Monday	Tuesday	Wednesday	Thursday	Friday	Saturday
29	30	1 10 Runs 0800-Paramedic Training 0930-Station Maintenance  1300-Station Maintenance	2 5 Runs 0930-Pump Testing  1700-EMT Training 1800-High Angle Rescue	3 6 Runs 0800-Paramedic Training 1000-Truck Visit  1300-Incident Critique 1800-EMT Training	4 4 Runs 0930-Paramedic Training  1300-Pump Testing	5 5 Runs Station Maintenance 1230-Apparatus Mechanical Backup Engine Checks
6 9 Runs Station Maintenance Generator Checks- L 0800-EMT Training 0800-Paramedic Training	7 8 Runs 0800-Paramedic Training 0930-Apparatus Mechanical 0930-Station Tours 1030-Station Tours	8 9 Runs 0800-Paramedic Training 0915- Truck visit 0930-Station Tour 1030-Drivers Training  1300-Confined Space Rescue	9 5 Runs 0915-Fire Extinguishers 0930-Station Maintenance 1015-Smoke/CO Detector In  1700-EMT Training 1800-Station Tours	10 8 Runs 0800-Paramedic Training 0800-EMT Training 0900-Certification Testing 0930-Truck Visit 1030-Drivers Training 1245-Public Safety Education 1300-Public Service	11 4 Runs 0800-EMT Training 0930-Pre Plan/Fire Inspection 1100-Aerial Apparatus Ops  1300-Truck Visit	12 14 Runs SRU/Tanker Checks 0930-Truck Visit Station Maintenance 1430-High Angle Rescue  1700-Streets and Locations
13 2 Runs Station Maintenance Generator Checks	14 7 Runs Aerial Checks Weekly/SCBA Check 0800-Paramedic Training 0800-Public Safety Education 0930-Apparatus Mechanical 1030-Aerial Apparatus Ops 1300-Aerial Apparatus Ops 1300-SCBA 1300-Public Safety Education	15 6 Runs 0800-Paramedic Training 1030-Hydrants  1300-Truck Visit 1345-Public Safety Education 1400-Tactical Medic T	16 9 Runs 0930-Aerial Apparatus Ops  1300-Aerial Apparatus Ops 1300-Public Safety Education 1700-EMT Training 1800-New Drivers Training	17 6 Runs 0800-Paramedic Training 0930-Station Maintenance 0930-Paramedic Training  1300-Apparatus Mechanical 1500-Incident Critique	18 12 Runs 0930-Pump Operations  1300-Pump Operations	19 7 Runs Station Maintenance 1030-Pump Operations Rescue 1/Trailer Checks
20 6 Runs Station Maintenance Generator Checks	21 9 Runs Weekly/Monitor Checks 0800-Paramedic Training 0930-Monitor Checks and C  1300-High Angle Rescue	22 8 Runs 0800-Paramedic Training 0930-High Angle Rescue 0930- Aerial Ops 1245-Public Safety Education 1300-confined space  1300-Aerial Apparatus Ops	23 7 Runs 0930-Station Tours 0930-Pump Operations 1030-Aerial Apparatus Ops  1300-Aerial Apparatus Ops 1400-High Angle Rescue 1700-EMT Training	24 4 Runs 0930-Apparatus Mechanical 0930- clutches/high ang 1100-Apparatus Compartme  1300-Aerial Apparatus Ops	25 4 Runs 0900-Public Safety Education 0930-Pump Operations  1300-Pump Operations	26 9 Runs 0900-Truck Visit UTV Checks  Station Maintenance
27 5 Runs Station Maintenance Generator Checks 1215-Drivers Training	28 2 Runs Weekly/Extinguisher C 0800-Paramedic Training 0930-Apparatus Mechanical  1300-Pump Operations 1430-Aerial Apparatus Ops	29 5 Runs 0800-Paramedic Training 0930-Pump Operations  1300-Aerial Apparatus Ops 1400-Officer Training	30 7 Runs 0930-Confined Space Rescue 1100-High Angle Rescue  1300-Fitness and Wellness 1400-Apparatus Mechanical 1400-Aerial Apparatus Ops 1700-EMT Training	31 10 Runs 0800-Paramedic Training 0900-Certification Testing 0930-Station Maintenance  1315-Apparatus Mechanical	1	2

# NOVEMBER 2024 Training

Sunday	Monday	Tuesday	Wednesday	Thursday	Friday	Saturday
27	28	29	30	31	1 10 Runs 0930-Salvage and Overhaul	2 7 Runs Station Maintenance
3 8 Runs Station Maintenance Generator Checks- Liv	4 8 Runs Monthly/Weekly Checks 0800-Paramedic Training 0930-Station Maintenance 0930-Apparatus Mechanical	5 4 Runs 0800-Paramedic Training 0930-Confined Space Rescu 0930-Building Construction  1300-Pump Operations 1430-Rules, Regs, Memos	6 9 Runs 1000-Paramedic Training 1030-Drivers Training  1530-Rules, Regs, Memos 1700-EMT Training 1800-Confined Space Rescu 2000-High Angle Rescue	7 2 Runs 0800-Paramedic Training 0800-Emergency Managem 0830-OSHA Training 0930-Equipment Maintenance	8 11 Runs 0800-Emergency Managem 0930-Equipment Maintenance  1300-Pump Operations	9 7 Runs SRU/Tanker Checks Station Maintenance  1500-Paramedic Training
10 6 Runs Station Maintenance Generator Checks	11 6 Runs 1100-Truck Visit Weekly/SCBA Checks  1300-SCBA 1400-Aerial Apparatus Ops	12 4 Runs 0800-Paramedic Training 0930-Incident Critique  1300-Fire Suppression 1445-Forcible Entry	13 6 Runs 0930-Fitness and Wellness  1500-Paramedic Training 1700-EMT Training 1800-Search and Rescue	14 3 Runs 0800-Paramedic Training 0930-Search and Rescue  1300-Ventilation	15 4 Runs 0930-Ventilation 1100-RIT Training  1330-Fire Suppression	16 8 Runs Station Maintenance 1000-Hazmat Monitor Check Rescue 1/Trailer Checks 1000-Station Tours 1100-Ventilation
17 7 Runs Station Maintenance Generator Checks	18 7 Runs Weekly/Monitor Checks 0800-Paramedic Training 0815-Officers Training 1030-Incident Critique  1300-Drivers Training 1400-Apparatus Mechanical 1400-Fire Extinguishers 1430-Hazmat Monitor Check	19 6 Runs 0800-Paramedic Training 0930-Search and Rescue  1300-Officers Training 1330-SCBA	20 7 Runs 0900-Paramedic Training 1000-Ventilation  1700-EMT Training 1800-Ventilation	21 6 Runs 0800-Paramedic Training 0930-Fitness and Wellness	22 8 Runs 0930-Officer Training 1030-Equipment Maintenance  1300-Incident Critique	23 6 Runs UTV Checks Station Maintenance  1300-Apparatus Mechanical
24 6 Runs Station Maintenance Generator Checks	25 9 Runs Weekly/Extinguisher Check Eye Wash Stations Check tires on other equipm (trailers, fans, insulvac, wag Aerial Checks Pressure test auto valves Med Rotation 1300-Size Up	26 7 Runs 0800-Paramedic Training 0930-Ventilation 1030-Search and Rescue  1315-Aerial Apparatus Ops 1400-Tactical Medic Tr	27 6 Runs 0900-Paramedic Training 0930-Apparatus Mechanical 0930-Aerial Apparatus Op 1000-Foam 1030-Equipment Maintenance  1330-New Drivers Training 1700-EMT Training	28 2 Runs	29 4 Runs 1000-Size Up	30 4 Runs Station Maintenance



# DECEMBER 2024 Training

Sunday	Monday	Tuesday	Wednesday	Thursday	Friday	Saturday
<b>1 7 Runs</b> Station Maintenance Generator Checks- Live	<b>2 8 Runs</b> Monthly/Weekly Checks 0800-Paramedic Training 0800-Physicals 1000-New Drivers Training 1100-Apparatus Mechanical	<b>3 4 Runs</b> 0730-Physicals 0800-Paramedic Training 1000-Incident Critique 1030-Water Rescue  1300-Water Rescue	<b>4 8 Runs</b> 0830-Physicals 0900-Paramedic Training   1800-Physicals	<b>5 5 Runs</b> 0800-Paramedic Training 1000-Pre Plan/Fire Inspection   1300-Hand Tools	<b>6 7 Runs</b> 0700-Paramedic Training 0930-Water Rescue 1030-Pre Plan/Fire Inspection Preplan/Inspection  1300-Pre Plan/Fire Inspection	<b>7 9 Runs</b> Station Maintenance 1130-Pump Operations  1230-Forcible Entry  1300-Fire Suppression 1400-Ground Ladders
<b>8 7 Runs</b> Station Maintenance Generator Checks	<b>9 9 Runs</b> 0800-Paramedic Training Weekly/SCBA Checks 0930-SCBA  1400-Aerial Apparatus Ops	<b>10 12 Runs</b> 0800-Paramedic Training 0930-Station Maintenance  1300-Fire Streams 1400-Tactical Medic Training	<b>11 5 Runs</b> 0930-Water Rescue   1800-Water Rescue	<b>12 9 Runs</b> 0800-Paramedic Training 0930-Pre Plan/Fire Inspection 1100-Apparatus Mechanical  1300-Fitness and Wellness 1430-RIT Training	<b>13 13 Runs</b> 0700-Paramedic Training 1030-Apparatus Mechanical 1030-Fitness and Wellness  1300-Pre Plan/Fire Inspection	<b>14 4 Runs</b> SRU/Tanker Checks Station Maintenance
<b>15 5 Runs</b> Station Maintenance Generator Checks	<b>16 9 Runs</b> 0930-Pump Operations   1330-Pump Operations	<b>17 4 Runs</b> 0930-High Angle   1300-Fire Streams	<b>18 6 Runs</b> 0930-Apparatus Mechanical   1300-Monitor Checks/Cal 1800-Incident Critique	<b>19 6 Runs</b> 0930-Equipment Maintenance 1000-Paramedic Training  1300-Paramedic Training 1400-Equipment Maintenance	<b>20 4 Runs</b> 0945-Apparatus Mechanical 1100-Incident Critique	<b>21 4 Runs</b> Station Maintenance  Rescue 1/Trailer Checks
<b>22 3 Runs</b> Station Maintenance Generator Checks	<b>23 3 Runs</b> Weekly/Extinguisher Checks Eye Wash Stations Check tires on other equipment (trailers, fans, insulvac, w Aerial Checks Pressure test auto valves 1300-Incident Critique 1330-Report Writing 1430-Extrication	<b>24 7 Runs</b> 1000-Paramedic Training	<b>25 3 Runs</b> 1030-Station Maintenance	<b>26 4 Runs</b> 0830-Report Writing 0930-Incident Critique  1300-Paramedic Training	<b>27 1 Run</b> 0930-Pump Operations 1045-Station Maintenance	<b>28 8 Runs</b> UTV Checks Station Maintenance
<b>29 8 Runs</b> Station Maintenance Generator Checks	<b>30 11 Runs</b> 0930-Safety 1030-Apparatus Mechanical  Aerial & Auto Drains Med Rotation 1300-Apparatus Mechanical	<b>31 15 Runs</b> 0930-Safety	1	2	3	4